



Washing Machine

User Manual

Pralni stroj

Uporabniški priročnik



WTV 8636 XS



EN / SL

Document Number : 2820527131_EN/ 26-06-20.(11:41)

1 General safety instructions

This section contains safety instructions that will help protect from risk of personal injury or property damage. Failure to follow these instructions shall void any warranty.

1.1 Life and property safety

- ▶ Never place the product on a carpet-covered floor. Otherwise, lack of airflow beneath the machine will cause electrical parts to overheat. This will cause problems with your product.
- ▶ Unplug the product if it is not in use.
- ▶ Always have the installation and repairing procedures carried out by the Authorised Service Agent. The manufacturer shall not be held liable for damages that may arise from procedures carried out by unauthorised persons.
- ▶ The water supply and draining hoses must be securely fastened and remain undamaged. Otherwise, there is the risk of water leakage.
- ▶ While there is still water inside the product, never open the loading door or remove the filter. Otherwise, risk of flooding and injury from hot water will occur.
- ▶ Do not force open the locked loading door. The door will open immediately after the washing cycle has ended. If the door does not open, apply the solutions provided for "Loading door cannot be opened." error in the Troubleshooting section. In case of forcing the loading door to open, the door and the lock mechanism may get damaged.
- ▶ Use detergents, softeners and supplements suitable for automatic washing machines only.
- ▶ Follow the instructions on the label of textile products and the detergent package.
- ▶ The water supply pressure required to run the product is between 1 to 10 bars (0.1 – 1 MPa).
- ▶ Do not use old or used water inlet hoses on the new product. It may cause stains on your laundry.



This product was manufactured using the latest technology in environmentally friendly conditions.

1.2 Children's safety

- ▶ This product can be used by children at and above 8 years old and by persons whose physical, sensory or mental capabilities were not fully developed or who lack experience and knowledge provided that they are supervised or trained on the safe usage of the product and the risks it brings out. Children should not play with the product. Cleaning and maintenance works should not be performed by children unless they are supervised by someone. Children under the age of 3 should be kept away unless continuously supervised.
- ▶ Packaging materials are dangerous for the children. Keep packaging materials in a safe place away from reach of the children.
- ▶ Electrical products are dangerous for the children. Keep children away from the product when it is in use. Do not allow them to play with the product. Use child lock to prevent children from intervening with the product.
- ▶ Do not forget to close the loading door when leaving the room where the product is located.
- ▶ Store all detergents and additives in a safe place away from the reach of the children by closing the cover of the detergent container or sealing the detergent package.

1.3 Electrical safety

- ▶ If the product has a failure, it should not be operated unless it is repaired by the Authorised Service Agent! There is the risk of electric shock!
- ▶ This product is designed to resume operating in the event of powering on after a power interruption. If you wish to cancel the programme, see "Cancelling the programme" section.
- ▶ Plug the product into a grounded outlet protected by a 16 A fuse. Do not neglect to have the grounding installation made by a qualified electrician. Our company shall not be liable for any damages that will arise when the product is used without grounding in accordance with the local regulations.
- ▶ Do not wash the product by spraying or pouring water onto it! There is the risk of electric shock!

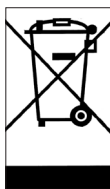
- ▶ Never touch the power cable plug with wet hands! Never unplug by pulling on the cable. Always press on the plug with one hand and pull out the plug by grabbing with the other hand.
- ▶ Product should be unplugged during installation, maintenance, cleaning and repair procedures.
- ▶ If the power cable is damaged, it must be replaced by the manufacturer, authorized service or a similarly qualified person (preferably an electrician) or someone designated by the importer in order to avoid possible risks.

1.4 Hot surface safety

	<p>The glass of the loading door gets too hot while washing at higher temperatures. Therefore, especially do not allow children touch the loading door glass while washing.</p>
---	---

2 Important instructions for environment

2.1 Compliance with WEEE Directive



This product complies with EU WEEE Directive (2012/19/EU). This product bears a classification symbol for waste electrical and electronic equipment (WEEE).

This product has been manufactured with high quality parts and materials which can be reused and are suitable for recycling. Do not dispose of the waste product with normal domestic and other wastes at the end of its service life. Take it to the collection center for the recycling of electrical and electronic equipment. Please consult your local authorities to learn about these collection centers.

Compliance with RoHS Directive:

The product you have purchased complies with EU RoHS Directive (2011/65/EU). It does not contain harmful and prohibited materials specified in the Directive.

2.2 Package information

Packaging materials of the product are manufactured from recyclable materials in accordance with our National Environment Regulations. Do not dispose of the packaging materials together with the domestic or other wastes. Take them to the packaging material collection points designated by the local authorities.

3 Intended use

- This product has been designed for domestic use. It is not for commercial purposes or it should not be used out of its intended use.
- The product must only be used for washing and rinsing of laundry that are marked accordingly.
- The manufacturer waives any responsibility arisen from incorrect usage or transportation.
- The service life of your product is 10 years. During this period, original spare parts will be available to operate the appliance properly.
- This appliance is intended to be used in household and similar applications such as:
 - staff kitchen areas in shops, offices and other working environments;
 - farm houses;
 - by clients in hotels, motels and other residential type environments;
 - bed and breakfast type environments;
 - areas for communal use in blocks of flats or in launderettes.

4 Technical specifications

Complying Commission Delegated Regulation (EU) No 1061/2010	
Supplier name or trademark	Beko
Model name	WTV 8636 XS
Rated capacity (kg)	8
Energy efficiency class / Scale from A+++ (Highest Efficiency) to D (Lowest Efficiency)	A+++
Annual Energy Consumption (kWh) ⁽¹⁾	175
Energy consumption of the standard 60°C cotton programme at full load (kWh)	0.910
Energy consumption of the standard 60°C cotton programme at partial load (kWh)	0.714
Energy consumption of the standard 40°C cotton programme at partial load (kWh)	0.649
Power consumption in 'off-mode' (W)	0.500
Power consumption in 'left-on mode' (W)	0.500
Annual Water Consumption (l) ⁽²⁾	10559
Spin-drying efficiency class / Scale from A (Highest Efficiency) to G (Lowest Efficiency)	B
Maximum spin speed (rpm)	1200
Remaining moisture Content (%)	53
Standard cotton programme ⁽³⁾	Cotton Eco 60°C and 40°C
Programme time of the standard 60°C cotton programme at full load (min)	260
Programme time of the standard 60°C cotton programme at partial load (min)	235
Programme time of the standard 40°C cotton programme at partial load (min)	235
Duration of the left-on mode (min)	N/A
Airborne acoustical noise emissions washing/spinning (dB)	54/75
Built-in	No
Height (cm)	84
Width (cm)	60
Depth (cm)	59
Net weight (±4 kg.)	67
Single Water inlet / Double Water inlet	• / -
• Available	
Electrical input (V/Hz)	230 V / 50Hz
Total current (A)	10
Total power (W)	2200
Main model code	1311
⁽¹⁾ Energy Consumption based on 220 standard washing cycles for cotton programmes at 60°C and 40°C at full and partial load, and the consumption of the low-power modes. Actual energy consumption will depend on how the appliance is used.	
⁽²⁾ Water consumption based on 220 standard washing cycles for cotton programmes at 60°C and 40°C at full and partial load. Actual water consumption will depend on how the appliance is used.	
⁽³⁾ "Standard 60°C cotton programme" and the "standard 40°C cotton programme" are the standard washing programmes to which the information in the label and the fiche relates and these programmes are suitable to clean normally soiled cotton laundry and that they are the most efficient programmes in terms of combined energy and water consumption.	
Technical specifications may be changed without prior notice to improve the quality of the product.	



WARNING: Consumption values are applicable for cases where the wireless network connection is off.

4.1 Installation

- Apply to the nearest authorised service agent for the installation of your product.
- Preparation of the location and electrical, tap water and waste water installations at the place of installation is under customer's responsibility.
- Make sure that the water inlet and discharge hoses as well as the power cable are not folded, pinched or crushed while pushing the product into its place after installation or cleaning procedures.
- Make sure that the installation and electrical connections of the product are performed by authorised service. Manufacturer shall not be held liable for damages that may arise from procedures carried out by unauthorised persons.
- Prior to installation, visually check if the product has any defects on it. If so, do not have it installed. Damaged products cause risks for your safety.

4.1.1 Appropriate installation location

- Place the product on a hard and level floor. Do not put it onto a carpet with high pile or other similar surfaces.
- When the washing machine and dryer are placed on top of each other, their total weight –when loaded– amounts to 180 kilograms. Place the product on a solid and flat floor that has sufficient load carrying capacity!
- Do not place the product on the power cable.
- Do not install the product in the environments where the temperature falls below 0 °C.
- Leaving a gap at the sides of the machine is suggested to reduce vibration and noise
- On a graduated floor, do not place the product next to the edge or on a platform.
- Do not place heat sources such as Hobs, Irons, Ovens, etc. on the washing machine and do not use them on the product.

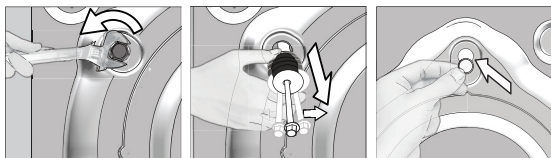
4.1.2 Removing packaging reinforcement



Tilt the machine backwards to remove the packaging reinforcement. Remove the packaging reinforcement by pulling the ribbon. Do not make this operation alone by yourself.

4.1.3 Removing the transportation locks

- 1 Loosen all bolts with an appropriate wrench until they turn freely.
- 2 Remove the transport safety bolts by turning them slightly.
- 3 Insert the plastic covers in the bag containing the user manual to the openings on the rear panel.



CAUTION: Remove the transportation safety bolts before operating the washing machine! Otherwise, the product will be damaged.



Keep the transportation safety bolts in a safe place to reuse when the washing machine needs to be moved again in the future.

Install the transport safety bolts in reverse order of the disassembly procedure.

Never move the product without the transportation safety bolts properly fixed in place!

4.1.4 Connecting water supply

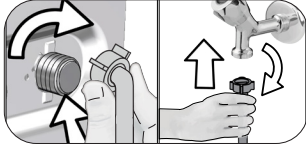


The water supply pressure required to run the product is between 1 to 10 bars (0.1 – 1 MPa). It is necessary to have 10 – 80 liters of water flowing from the fully open tap in one minute to have your machine run smoothly. Attach a pressure reducing valve if water pressure is higher.



CAUTION: Models with a single water inlet should not be connected to the hot water tap. In such a case the laundry will get damaged or the product will switch to protection mode and will not operate.

CAUTION: Do not use old or used water inlet hoses on the new product. It may cause stains on your laundry.



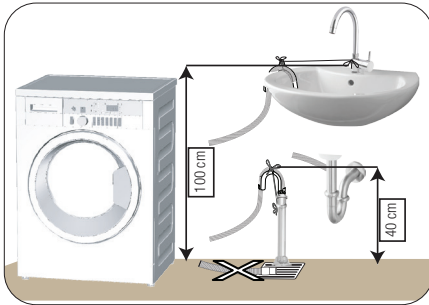
- 1 Tighten the nuts of the hose by hand. Never use a tool when tightening the nuts.
- 2 When hose connection is completed, check whether there is leak problems at the connection points by opening the taps fully. If any leaks occur, turn off the tap and remove the nut. Retighten the nut carefully after checking the seal. In order to prevent the water leaks and resultant damages, keep the taps closed when you do not use the product.

4.1.5 Connecting the drain hose to the drain

- Attach the end of the drain hose directly to waste water drain, lavatory or bathtub.



CAUTION: Your drain house will be flooded if the hose comes out of its housing during water discharge. Moreover, there is risk of scalding due to high washing temperatures! In order to prevent such situations and make sure that the machine performs water intake and discharge processes without any problem, fix the drain hose securely.



- Connect the drain hose to a minimum height of 40 cm and a maximum height of 100 cm.
- In case the drain hose is elevated after laying it on the floor level or close to the ground (less than 40 cm above the ground), water discharge becomes more difficult and the laundry may come out excessively wet. Therefore, follow the heights described in the figure.

- To prevent the waste water to go back into the machine again and to ensure easy drainage, do not immerse the end of the hose into the waste water or do not insert it into the drain for more than 15 cm. If it is too long, cut it short.
- The end of the hose should not be bent, it should not be stepped on and the hose must not be pinched between the drain and the machine.
- If the length of the hose is too short, use it by adding an original extension hose. Length of the hose may not be longer than 3.2 m. To avoid water leak failures, the connection between the extension hose and the drain hose of the product must be fitted well with an appropriate clamp as not to come off and leak.

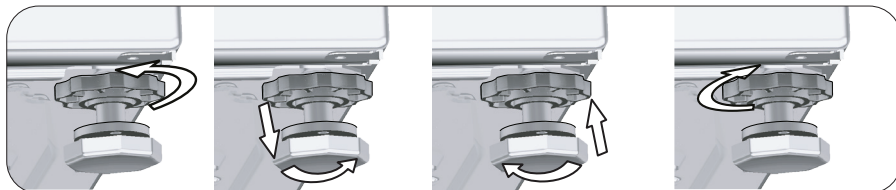
4.1.6 Adjusting the feet



CAUTION: In order to ensure that the product operates more silently and vibration-free, it must stand level and balanced on its feet. Balance the machine by adjusting the feet. Otherwise, the product may move from its place and cause crushing and vibration problems.

CAUTION: Do not use any tools to loosen the lock nuts. Otherwise, they will get damaged.

- 1 Loosen the lock nuts on the feet by hand.
- 2 Adjust the feet until the product stands in a stable and balanced way.
3. Tighten all lock nuts by hand again.



4.1.7 Electrical connection

Connect the product to a grounded outlet protected by a 16 A fuse. Our company shall not be liable for any damages that will arise when the product is used without grounding in accordance with the local regulations.

- Connection must comply with national regulations.
- The wiring for the electrical outlet circuit must be sufficient to meet the appliance requirements. Use of a Ground Fault Circuit Interrupter (GFCI) is recommended.
- Power cable plug must be within easy reach after installation.
- If the current value of the fuse or breaker in the house is less than 16 Amps, have a qualified electrician install a 16 Amp fuse.
- The voltage specified in the "Technical specifications" section must be equal to your mains voltage.
- Do not make connections via extension cables or multi-plugs.



CAUTION: Damaged power cables must be replaced by the Authorised Service Agents.

4.1.8 Initial use



Before starting to use the product make sure that the preparations are made which are in line with the "Important Safety and Environment Instructions" and the instructions in the "Installation" section.

To prepare the product for washing laundry, perform first operation in Drum Cleaning programme. If this program is not available in your machine, apply the method which is described in the section 4.4.2.



Use an anti-limescale suitable for the washing machines.

Some water might have remained in the product due to the quality control processes in the production. It is not harmful for the product.

4.2 Preparation

4.2.1 Sorting the laundry

- Sort laundry according to type of fabric, color, and degree of soiling and allowable water temperature.
- Always observe the instructions given on the garment care labels.

4.2.2 Preparing laundry for washing

- Laundry items with metal attachments such as, underwiring, belt buckles or metal buttons will damage the product. Remove the metal pieces or wash such clothes by putting them in a laundry bag or pillow case.
- Take out all substances in the pockets such as coins, pens and paper clips, and turn pockets inside out and brush. Such objects may damage the product or cause noise problem.
- Put small size clothes such as infant's socks and nylon stockings in a laundry bag or pillow case.
- Place curtains in without compressing them. Remove curtain attachment items.
- Fasten zippers, sew loose buttons and mend rips and tears.
- Wash "Machine washable" or "Hand washable" labeled products only with an appropriate programme.
- Do not wash colours and whites together. New, dark coloured cottons release a lot of dye. Wash them separately.
- Tough stains must be treated properly before washing. If unsure, check with a dry cleaner.
- Only use the dyes / color changers and descaling agents which are appropriate for machine wash. Always follow the instructions on the package.
- Wash trousers and delicate laundry turned inside out.
- Keep laundry items made of Angora wool in the freezer for a few hours before washing. This will reduce piling.
- Laundry that are subjected to materials such as flour, lime dust, milk powder, etc. intensely must be shaken off before placing into the product. Such dusts and powders on the laundry may build up on the inner parts of the product in time and can cause damage.

4.2.3 Tips for energy saving

Following information will help you use the product in an ecological and energy-efficient manner.

- Operate the product in the highest load capacity allowed for the programme you have selected, but do not overload. See, "Programme and consumption table".
- Observe the temperature instructions on the detergent packaging.
- Wash slightly soiled laundry at low temperatures.
- Use faster programmes for small quantities of lightly soiled laundry.
- Do not use prewash and high temperatures for laundry that is not heavily soiled or stained.
- If you plan to dry your laundry in a dryer, select the highest spin speed recommended during washing process.
- Do not use more detergent than the recommended on the detergent packaging.

4.2.4 Loading the laundry

1. Open the loading door.
2. Put the laundry items into the product in a loose manner.
3. Push the loading door to close until you hear a locking sound. Ensure that no items are caught in the door. The loading door is locked while a programme is running. The door lock will open immediately after the washing programme has ended. Then you can open the loading door. If the door does not open, apply the solutions provided for "Loading door cannot be opened." error in the Troubleshooting section.

4.2.5 Correct load capacity

The maximum load capacity depends on the type of laundry, the degree of soiling and the desired washing programme.

The product automatically adjusts the water amount according to the weight of the laundry put inside it.

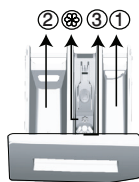


WARNING: Comply with the information in the section "Programme and consumption table". When overloaded, product's washing performance will drop. Moreover, noise and vibration problems may occur.

4.2.6 Using detergent and softener



When using detergent, softener, starch, fabric dye, bleach and descaling agents; read the manufacturer's instructions written on the package and follow the dosages specified. Use measuring cup if available.



The detergent drawer is composed of three compartments:

- (1) for prewash
- (2) for main wash
- (3) for softener
- (⊗) in addition, there is a siphon piece in the softener compartment.

Detergent, softener and other cleaning agents

- Add detergent and softener before starting the washing programme.
- While the washing cycle is in progress, do not leave the detergent drawer open!
- When using a programme without prewash, do not put any detergent into the prewash compartment (compartment no. "1").
- In a programme with prewash, do not put liquid detergent into the prewash compartment (compartment no. "1").
- Do not select a programme with prewash if you are using a detergent bag or dispensing ball. Place the detergent bag or the dispensing ball directly among the laundry in the product.
- If you are using liquid detergent, do not forget to place the liquid detergent container into the main wash compartment (compartment no. "2").

Choosing the detergent type

Detergent type to be used depends on the fabric type and color.

- Use different detergents for coloured and white laundry.
- Wash your delicate clothes only with special detergents (liquid detergent, wool shampoo, etc.) intended solely for delicate clothes.
- When washing dark coloured clothes and quilts, it is recommended to use liquid detergent.
- Wash woolsens with special detergent made specifically for woolsens.



WARNING: Use only detergents manufactured specifically for washing machines.

WARNING: Do not use soap powder.

Adjusting detergent amount

The amount of washing detergent to be used depends on the amount of laundry, the degree of soiling and water hardness.

- Do not use amounts exceeding the dosage quantities recommended on the detergent package to avoid problems of excessive foam, poor rinsing, financial savings and finally, environmental protection.
- Use lesser detergent for small amounts or lightly soiled clothes.

Using softeners

Pour the softener into the softener compartment of the detergent drawer.

- Do not exceed the (>max<) level sign on the softener compartment.
- If the softener has lost its fluidity, dilute it with water before adding it in the detergent compartment.

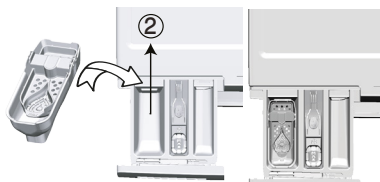


WARNING: Do not use liquid detergents or other cleaning products other than fabric softeners produced for washing machines to soften the clothes.

Using liquid detergents

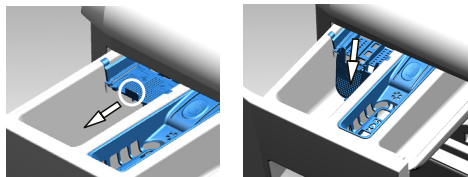
If the product contains a liquid detergent cup:

- Put the liquid detergent container into the compartment no "2".
- If the liquid detergent lost its fluidity, dilute it with water before putting it into the detergent container.



If the product is equipped with a liquid detergent part:

- When you want to use liquid detergent, pull the apparatus towards yourself. The part that falls down will serve as a barrier for the liquid detergent. If required, clean the apparatus with water when it is in place or by removing it. If you will use powder detergent, the apparatus must be secured at top position.



If the product does not contain a liquid detergent cup:

- Do not use liquid detergent for the prewash in a programme with prewash.
- Liquid detergent stains your clothes when used with "End Time" function to started delayed. If you are going to use the End Time function, do not use liquid detergent.

Using gel and tablet detergent

- If the gel detergent thickness is fluidal and your product does not contain a special liquid detergent container, put the gel detergent into the main wash detergent compartment during first water intake. If your product contains a liquid detergent container, fill the detergent into this container before starting the programme.
- If the gel detergent thickness is not fluidal or in the shape of capsule liquid tablet, put it directly into the drum before washing.
- Put tablet detergents into the main wash compartment (compartment no. "2") or directly into the drum before washing.

Using starch

- Add liquid starch, powder starch or the dyestuff into the softener compartment.
- Do not use softener and starch together in a washing cycle.
- Wipe the inside of the product with a damp and clean cloth after using starch.

Using limescale remover

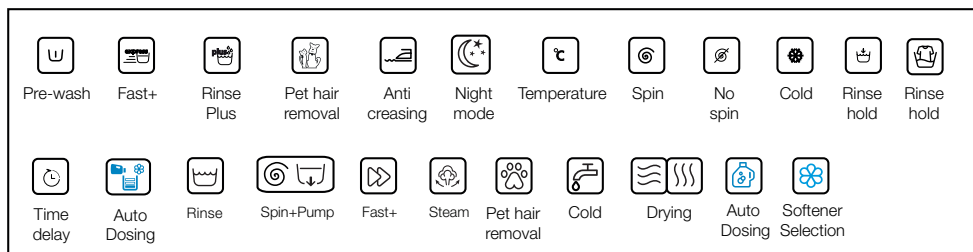
- When required, use limescale removers manufactured specifically for washing machines only.

Using bleaches

- Select a programme with prewash and add the bleach at the beginning of the prewash. Do not put detergent in the prewash compartment. As an alternative application, select a programme with extra rinse and add the bleach while the product is taking water from the detergent compartment during first rinsing step.
- Do not use bleach and detergent by mixing them.
- Use just a little amount (approx. 50 ml) of bleach and rinse the clothes very well as it causes skin irritation.
- Do not pour the bleach onto the laundry.
- Do not use it with the colored items.
- When using an oxygen-based bleach, select a program which washes the laundry at a low temperature.
- Oxygen-based bleach can be used together with the detergent. However, if its thickness is not the same with the detergent, put the detergent first into the compartment no. "2" in the detergent drawer and wait until the detergent flows while the product is taking in water. While the product continues taking in water, add bleach in the same compartment.

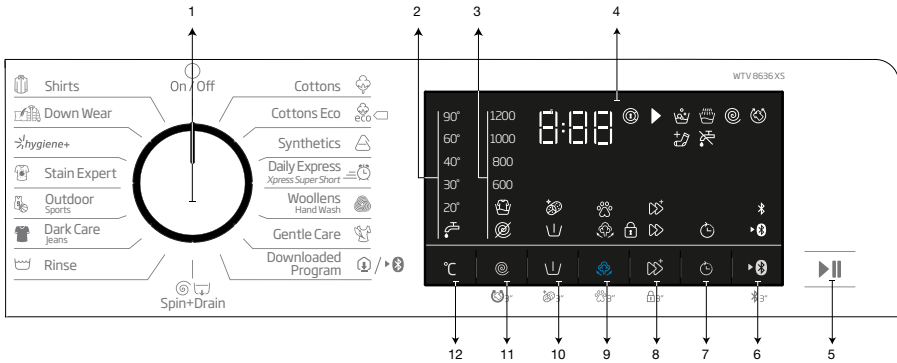
4.2.7 Tips for efficient washing

		Clothes			
		Light Colours and Whites	Colours	Black/Dark Colours	Delicates/Woolens/Silks
		(Recommended temperature range based on soiling level: 40-90°C)	(Recommended temperature range based on soiling level: cold -40°C)	(Recommended temperature range based on soiling level: cold -40°C)	(Recommended temperature range based on soiling level: cold-30°C)
Soiling Level	Heavily Soiled (difficult stains such as grass, coffee, fruits and blood.)	It may be necessary to pre-treat the stains or perform prewash. Powder and liquid detergents recommended for whites can be used at dosages recommended for heavily soiled clothes. It is recommended to use powder detergents to clean clay and soil stains and the stains that are sensitive to bleaches.	Powder and liquid detergents recommended for colors can be used at dosages recommended for heavily soiled clothes. It is recommended to use powder detergents to clean clay and soil stains and the stains that are sensitive to bleaches. Detergents which do not contain bleach should be used.	Liquid detergents suitable for colors and dark colors can be used at dosages recommended for heavily soiled clothes.	Prefer liquid detergents produced for delicate clothes. Woolen and silk clothes must be washed with special woolen detergents.
	Normally Soiled (For example, stains caused by body on collars and cuffs)	Powder and liquid detergents recommended for whites can be used at dosages recommended for normally soiled clothes.	Powder and liquid detergents recommended for colors can be used at dosages recommended for normally soiled clothes. Detergents which do not contain bleach should be used.	Liquid detergents suitable for colors and dark colors can be used at dosages recommended for normally soiled clothes.	Prefer liquid detergents produced for delicate clothes. Woolen and silk clothes must be washed with special woolen detergents.
	Lightly Soiled (No visible stains exist.)	Powder and liquid detergents recommended for whites can be used at dosages recommended for lightly soiled clothes.	Powder and liquid detergents recommended for colors can be used at dosages recommended for lightly soiled clothes. Detergents which do not contain bleach should be used.	Liquid detergents suitable for colors and dark colors can be used at dosages recommended for lightly soiled clothes.	Prefer liquid detergents produced for delicate clothes. Woolen and silk clothes must be washed with special woolen detergents.



4.3 Operating the product

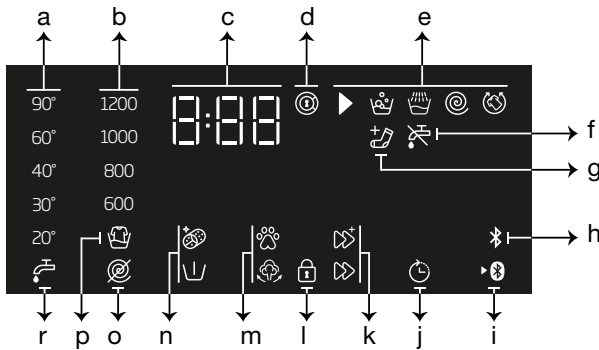
4.3.1 Control panel



- 1 - Programme Selection knob
- 2 - Temperature level lights
- 3 - Spin level indicator lights
- 4 - Display
- 5 - Start / Pause button
- 6 - Remote Control button.

- 7 - End Time Setting button
- 8 - Auxiliary Function button 3
- 9 - Auxiliary Function button 2
- 10 - Auxiliary Function button 1
- 11 - Spin speed adjustment button
- 12 - Temperature adjustment button

4.3.2 Display symbols



- a- Temperature indicator
- b- Spin speed indicator
- c- Duration information
- d- Door lock is engaged symbol
- e- Programme follow-up indicator
- f- No Water indicator
- g- Add Garment indicator
- h- Bluetooth Connection indicator
- i- Remote Control indicator

- j - Delayed Start Enabled indicator
- k - Auxiliary Function indicators 3
- l - Child Lock is Engaged symbol
- m- Auxiliary Function indicators 2
- n- Auxiliary Function indicators 1
- o- No Spin Indicator
- p- Rinse Hold Indicator
- r- Cold Water indicator



The visuals used for machine description in this section are schematic and may not match exactly will the features of your machine.

4.3.3 Programme and consumption table

EN						Auxiliary functions					
Programme		Max. Load (kg)	Water Consumption (l)	Energy Consumption (kWh)	Max. Speed***	Steam	Fast+	Prewash	Pet Hair Removal	Anti-Crease+	Selectable temperature range °C
Cottons	90	8	95	2,40	1200	•	•	•	•	•	Cold-90
	60	8	95	1,80	1200	•	•	•	•	•	Cold-90
	40	8	93	0,97	1200	•	•	•	•	•	Cold-90
Cottons Eco	60**	8	53,6	0,910	1200						Cold-60
	60**	4	44,4	0,714	1200						Cold-60
	40**	4	43,2	0,649	1200						Cold-60
Synthetics	60	3	71	1,35	1200	•	•	•	•	•	Cold-60
	40	3	67	0,85	1200	•	•	•	•	•	Cold-60
Daily Express / Xpress Super Short	90	8	66	2,20	1200	•	•			•	Cold-90
	60	8	66	1,20	1200	•	•			•	Cold-90
	30	8	66	0,20	1200	•	•			•	Cold-90
Daily Express / Xpress Super Short + Fast+	30	2	40	0,15	1200	•	•			•	Cold-90
Woolens / Hand Wash	40	1,5	55	0,50	1200						Cold-40
Gentle Care	40	3,5	55	0,72	800						Cold-40
Dark Care / Jeans	40	3,5	83	0,85	1200	•	•	•	•	•	Cold-40
Outdoor / Sports	40	3,5	55	0,50	1200			•			Cold-40
Stain Expert	60	4	80	1,70	1200		•	•			30-60
Hygiene +	90	8	125	2,90	1200	*					20-90
Down Wear	60	2	89	1,30	1000	•					Cold-60
Shirts	60	3	63	1,23	800	•	•	•	•	•	Cold-60
Drum Clean+	90	-	73	2,60	600	*					90
Downloaded Program*****											
Mix	40	3,5	83	0,90	800	•	•	•		•	Cold-40
Curtain	40	2	86	0,70	800			•			Cold-40
Lingerie	30	1	70	0,30	600						Cold-30
Soft Toys	40	1	55	0,50	600						Cold-40
Towel	60	1	75	1,20	1000	•					Cold-60

• : Selectable.




* : Automatically selected, cannot be cancelled.

** : Energy Label programme (EN 60456 Ed.3)

*** : If maximum spin speed of the machine is lower then this value, you can only select up to the maximum spin speed.

***** : These programmes can be used with the HomeWhiz application.

- : See the programme description for maximum load.


 ** "Cotton eco 40°C and Cotton eco 60°C are standard programmes." These programmes are known as '40°C cotton standard programme' and '60°C cotton standard programme' and indicated with   symbols on the panel.



The auxiliary functions in the table may vary according to the model of your machine.

Water and power consumption may vary subject to the changes in water pressure, water hardness and temperature, ambient temperature, type and amount of laundry, selection of auxiliary functions and spin speed, and changes in electric voltage.

You can see the washing duration on the display of your machine while selecting a programme. Depending on the amount of laundry you have loaded into your machine, there may be a difference of 1-1.5 hours between the duration shown on the display and the actual duration of the wash cycle. Duration will be automatically updated soon after the washing starts.

"Selection patterns for auxiliary functions can be changed by the manufacturer company. New selection patterns can be added or removed."

"The spin speed of your machine may vary according to the programme; this spin speed cannot exceed the max. spin speed of your machine."

Indicative values for Synthetics programmes (EN)

	Load (kg)	Water Consumption (l)	Energy Consumption (kWh)	Programme Duration (min)	Remaining Moisture Content (%) **	Remaining Moisture Content (%) **
					≤ 1000 rpm	> 1000 rpm
Synthetics 60	3	71	1,35	115/150	45	40
Synthetics 40	3	67	0,85	115/150	45	40

* You can see the washing time of the programme you have selected on the display of the machine. It is normal that small differences may occur between the time shown on the display and the real washing time.

** Remaining moisture content values may differ according to the selected spin speed.

4.3.4 Programme selection

- 1 Determine the programme suitable for the type, quantity and soiling level of the laundry in accordance with "Programme and consumption table".

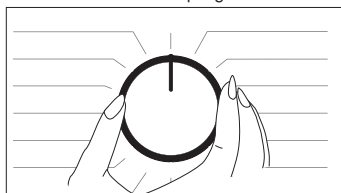


Programmes are limited with the highest spin speed appropriate for that particular type of fabric.

When selecting a programme, always consider the type of fabric, colour, degree of soiling and permissible water temperature.

Always select the lowest appropriate temperature. Higher temperature means higher electricity consumption.

- 2 Select the desired programme with the **Programme Selection knob**.



4.3.5 Programmes

• Cottons Eco

Use to wash your normally soiled, durable cotton and linen laundry. Although it washes longer than all other programmes, it provides high energy and water savings. Actual water temperature may be different from the stated wash temperature. When you load the machine with less laundry (e.g. ½ capacity or less), periods in programme stages may automatically get shorter. In this case, energy and water consumption will decrease more, providing a more economic wash.

• Cottons

You can wash your durable cotton laundry (sheets, bedlinen, towels, bathrobes, underwear etc.) in this programme. When the quick wash function button is pressed, programme duration becomes notably shorter but effective washing performance is ensured with intense washing movements. If the quick wash function is not selected, superior washing and rinsing performance is ensured for your heavily soiled laundry.

• Synthetics

You can wash your laundry (such as shirts, blouses, synthetic/cotton blended fabrics etc.) in this programme. The programme duration gets notable shorter and washing with high performance is ensured. If the quick wash function is not selected, superior washing and rinsing performance is ensured for your heavily soiled laundry.

• Woollens / Hand Wash

Use to wash your woollen/delicate laundry. Select the appropriate temperature complying with the tag of your clothes. Your laundry will be washed with a very gentle washing action in order not to damage the clothes.

• Hygiene+

Applying a steam step at the beginning of the programme allows to soften the dirt easily.

Use this programme for your laundry (baby clothes, bed sheets, bedlinen, underwear, etc. cotton items) that requires an anti-allergic and hygienic washing at high temperature with intensive and long washing cycle. The high level of hygiene is ensured thanks to the steam application before the programme, long heating duration and additional rinsing step.

- Programme was tested by „The British Allergy Foundation

„ (Allergy UK) with the 60°C temperature option selected and it was certified in terms of its efficacy in eliminating allergens in addition to bacteria and mould.



Allergy UK is the brand of the British Allergy Association. Seal of Approval is created to guide people that require recommendation about a product that the related product restricts / reduces / eliminates the allergens or reduces the allergen content significantly in the ambient where allergy patients exist. It aims to provide assurance that the products are tested scientifically or examined in a way to provide measurable results.

• Down Wear

Use this programme to wash your coats, vest, jackets etc. containing feathers with a "machine-washable" label on them. Thanks to special spinning profiles, it is ensured that the water reaches the air gaps amongst the feathers.

• Spin+Drain

You can use this function to remove the water on the garment to drain the water in the machine.

• Rinse

Use when you want to rinse or starch separately.

• Curtain

You can use this programme to wash your tulles and curtains. As their meshed texture causes excessive foaming, put little amount of detergent into the main wash compartment. Thanks to the special spin profile of the programme, tulles and curtains crease lesser. Do not load your curtains above the specified capacity in order not to damage them.



It is recommended to use special detergents produced for curtains in the powder detergent compartment in this programme.

• Shirts

This programme is used to wash the shirts made from cotton, synthetic and synthetic blended fabrics altogether. It reduces wrinkles. When the quick wash function is selected, the Pre-treatment algorithm is executed.

- Apply the pre-treatment chemical on your garments directly or add it together with the detergent when the machine starts to take water in the powder detergent compartment. Thus, you can obtain the same performance as you obtain with normal washing in a much shorter period of time. Usage life of your shirts increases.

- **Daily Express / Xpress Super Short**

Use this programme to wash your lightly soiled or unspotted cotton clothes in a short time. The programme duration can be reduced down to 14 minutes when the quick wash function is selected. When the quick wash function is selected, maximum 2 (two) kg of laundry must be washed.

- **Dark Care / Jeans**

Use this programme to protect the colour of your dark-coloured garments or jeans. It performs high performance washing with special drum movement even if the temperature is low. It is recommended to use liquid detergent or woolen shampoo for dark coloured laundry. Do not wash your delicate clothes containing wool or etc.

- **Mix**

Use to wash your cotton and synthetic clothes together without sorting them.

- **Gentle Care**

You can wash your delicate clothes such as cotton/synthetic blended knitwear or hosiery in this programme. It washes with more delicate washing action. Wash your clothes whose colour you want to preserve either at 20 degrees or by selecting the cold wash option.

- **Lingerie**

You can use this programme to wash delicate garments that are suitable for hand wash and delicate women's underwear. Small amount of garments must be washed in a washing net. Hooks, buttons etc. must be done up and zips must be zipped up.

- **Outdoor / Sports**

You can use this programme to wash sports and outdoors garments that contain cotton/synthetics mix and water repellent covers such as gore-tex etc. It makes sure your garments are washed gently thanks to special rotating movements.

- **Stain Expert**

The machine has a special stain programme which enables the removal of different types of stains in the most effective way. Use this programme only for durable colourfast cotton laundry. Do not wash delicate and pigmenting clothes and laundry in this programme. Before washing, garment tags should be checked (recommended for cotton shirts, trousers, shorts, t-shirts, baby clothes, pyjamas, aprons, table clothes, bed sheets, duvet covers, pillowcases, bath-beach towels, towels, socks, cotton underwear that are suitable for washing at high temperature and long time). In the automatic stain programme, you can wash 24 types of stains divided into two different groups according to quick function selection. You can see stain groups based on the selection of the quick function.

You can find stain groups based on quick function below:

When quick function is selected:		
Blood	Tea	Red Wine
Chocolate	Coffee	Curry
Pudding	Fruit juice	Jam
Egg	Ketchup	Coal

When quick function is not selected:		
Butter	Sweat	Salad Dressing
Grass	Collar Soil	Make-up
Mud	Food	Machine Oil
Coke	Mayonnaise	Baby Food

- Select the stain programme.
- Select the stain you want to clean by locating it in the groups above and selecting the related group with the quick auxiliary function button.
- Read the garment tag carefully and ensure that correct temperature and spin speed are selected.

• Downloaded Program

This is a special programme that allows you to download different programmes when you want to. At the start, there is a programme you can see with the HomeWhiz application as default. However, you can use the HomeWhiz application to select a programme from the predetermined programme set, and then change and use it.



If you want to use HomeWhiz feature and Remote Control function, you must select Downloaded Programme. Detailed information can be found in 4.3.15 HomeWhiz Feature and Remote Control Function.

• Soft Toys

Soft toys must be washed in a delicate programme due to their delicate fabrics, and the fibre and accessories they contain. Thanks to its delicate washing movements and spinning profile, the soft toys programme protects the toys during washing. It is recommended to use liquid detergent.



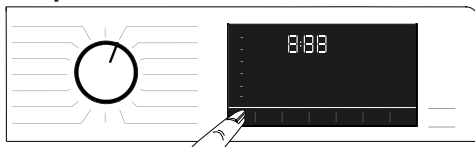
Fragile toys with hard surfaces must not be washed under any circumstances.

Toys must not be washed together with your garments since they may harm laundry.

• Towel

Use this program to wash durable cotton laundry such as towels. Load the towels into the machine paying attention to place them in a way that they will not contact the bellow or the glass.

4.3.6 Temperature selection



Whenever a new programme is selected, the recommended temperature for the programme appears on the temperature indicator. It is possible that the recommended temperature value is not the maximum temperature that can be selected for the current programme.

Press the **Temperature Adjustment button** to change the temperature. Temperature decreases gradually.



No change can be made in programmes where temperature adjustment is not allowed.

You can also change the temperature after the washing starts. This change can be made if the washing steps allow it. Changes cannot be made if the steps do not allow it.



If you scroll to cold wash option and press Temperature Adjustment button again, the recommended maximum temperature for the selected programme appears on the display. Press the Temperature Adjustment button again to decrease the temperature.

4.3.7 Spin speed selection



Whenever a new programme is selected, the recommended spin speed of the selected programme is displayed on the **Spin Speed** indicator.



It is possible that the recommended spin speed value is not the maximum spin speed that can be selected for the current programme.

Press the **Spin Speed Adjustment** button to change the spin speed. Spin speed decreases gradually. Then, depending on the model of the product, "Rinse Hold" and "No Spin" options appear on the display. If you are not going to unload your laundry immediately after the programme completes, you can use **Rinse Hold** function in order to prevent them from getting wrinkled when there is no water in the machine. This function holds the laundry in the final rinsing water.

If you want to spin your laundry after the Rinse Hold function:

- Adjust the **Spin Speed**.

- Press **Start / Pause / Cancel**. The programme will resume. Machine drains the water and spins the laundry.

If you want to drain the water at the end of the programme without spinning, use **No Spin** function.



No change can be made in programmes where spin speed adjustment is not allowed.

You can change the spin speed after the washing starts if the washing steps allow it. Changes cannot be made if the steps do not allow it.

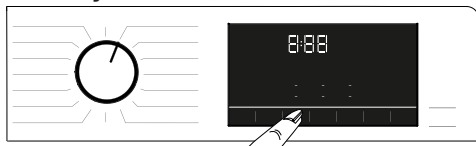
Rinse hold

If you are not going to unload your clothes immediately after the programme completes, you can use rinse hold function to keep your laundry in the final rinsing water in order to prevent them from getting wrinkled when there is no water in the machine. Press Start / Pause button after this process if you want to drain the water without spinning your laundry. Programme will resume and complete after draining the water.

If you want to spin the laundry held in water, adjust the Spin Speed and press Start / Pause button.

The programme will resume. Water is drained, laundry is spun and the programme is completed.

4.3.8 Auxiliary function selection



Select the desired auxiliary functions before starting the programme. Whenever a programme is selected, icons of the auxiliary function symbol that is selected together with it illuminates.



When an auxiliary function button that cannot be selected with the current programme is pressed, the washing machine will make a warning sound.

Also the frames of the auxiliary function selected for the current programme after the washing has started remains illuminated.



Some functions cannot be selected together. If a second auxiliary function conflicting with the first one is selected before starting the machine, the function selected first will be canceled and the second auxiliary function selection will remain active. For example, if you want to select Quick Wash after you have selected the Additional Water, Additional Water will be canceled and Quick Wash will remain active.

An auxiliary function that is not compatible with the programme cannot be selected. (See "Programme and consumption table")

Some programmes have auxiliary functions that must be operated simultaneously. Those functions cannot be cancelled. The frame of the auxiliary function will not be illuminated, only inner area will be illuminated.

4.3.8.1 Auxiliary functions

• Prewash

A Prewash is only worthwhile for heavily soiled laundry. Not using the Prewash will save energy, water, detergent and time.

- **Fast+**

After selecting a programme, you can press the Quick Wash setting key to shorten the programme duration. For some programmes, the duration can shorten by over 50%. Despite this, the washing performance is good thanks to the changed algorithm.

Although it varies in each programme, when you press the Quick Wash key once, the programme duration decreases to a certain level, and when you press the same key for the second time, it drops to the minimum level. For a better washing performance, do not use the Quick Wash setting key when washing heavily soiled laundry. Shorten the programme duration by using the Quick Wash key for Moderately and Slightly soiled laundry.

- **Steam**

Use this programme to reduce the creases and ironing times of a small amount of unspotted cotton, synthetic or mixed laundry.

- **Remote Control** 

You can use this auxiliary function key to connect your product to smart devices. For detailed information, see 4.3.15 HomeWhiz Feature and Remote Control Function.

- **Customized Programme**

This auxiliary function can only be used for Cotton and Synthetics programmes together with the HomeWhiz application. When this auxiliary function is activated, you can add up to 4 auxiliary rinsing steps to the programme. You can select and use some auxiliary functions even though they are not found on your product. You can increase and decrease the time of the Cottons and Synthetics programmes within a safe range.



When the Customized Programme auxiliary function is selected, the washing performance and energy consumption will be different than the declared value.

4.3.8.2 Functions/Programmes Selected by Pressing the Function Keys for 3 Seconds

- **Drum Clean+** 

Press and hold the auxiliary function button 1 for 3 seconds to select the programme. Use regularly (once in every 1-2 months) to clean the drum and provide the required hygiene. Steam is applied before the programme to soften the residues in the drum. Operate the programme while the machine is completely empty. To obtain better results, put powder lime-scale remover for washing machines into the detergent compartment no. „2“. When the programme is over, leave the loading door ajar so that the inside of the machine gets dry.



This is not a washing programme. It is a maintenance programme.

Do not run the programme when there is something in the machine. If you try to do so, the machine detects that there is load inside and aborts the programme.

- **Anti-Crease+** 

This function is selected when the spin selection button is pressed and held for 3 seconds and the programme follow-up light for the relevant step turns on. When the function is selected, the drum rotates for up to 8 hours for preventing the laundry from creasing at the end of the programme. You can cancel the programme and take your laundry out at any time during the 8-hour duration. Press the function selection key or the machine on/off key to cancel the function. The programme follow-up light will remain on until the function is canceled or the step is complete. If the function is not cancelled, it will be active in the subsequent washing cycles as well.

- **Pet Hair Removal** 

This function is selected when the auxiliary function button 2 is pressed and held for 3 seconds.

This function helps to remove pet hair that remain on your garments more effectively.

When you select this function, Prewash and Extra Rinse steps are added to the normal programme. Thus, washing is performed with more water and the pet hair is removed more effectively.

• Child lock

Use Child Lock function to prevent children from tampering with the machine. Thus you can avoid any changes in a running programme.



You can switch on and off the machine with On / Off button when the Child Lock is active. When you switch on the machine again, programme will resume from where it has stopped.

When the Child Lock is enabled, an audio warning will be given if the buttons are pressed. Audio warning will be canceled if the buttons are pressed five times consecutively.

To activate the Child Lock:

Press and hold Auxiliary Function button 3 for 3 seconds. After the countdown as **"CL 3-2-1"** on the display is over, "CL On" symbol appears on the display. When this warning is displayed, you can release the **Auxiliary Function button 3**.

To deactivate the Child Lock:

Press and hold Auxiliary Function button 3 for 3 seconds. After the countdown as **"CL 3-2-1"** on the display is over, "CL Off" symbol disappears.

• Bluetooth 3"

You can use the bluetooth connection function to pair your machine with your smart device. This way, you can use your smart device to get information about your machine and control it.

To activate bluetooth connection:

Press and hold Remote Control function button for 3 seconds. Countdown **"3-2-1"** will be displayed, and then "On" icon will appear on the display. Release **Remote Control function button**. The bluetooth icon will flash while the product is pairing with smart device. If connection is successful, icon will remain on.

To deactivate bluetooth connection:

Press and hold Remote Control function button for 3 seconds. Countdown **"3-2-1"** will be displayed, and then "Off" icon will appear on the display.



First setup of the HomeWhiz application must be complete for the bluetooth connection to be activated. After setup, pressing the remote control function button while the knob is at Download Program/Remote Control position will automatically activate the bluetooth connection.

4.3.9 End Time

Time display

Remaining time for the completion of the programme while it is running is displayed as "01:30" in hours and minutes format.



Programme time may differ from the values in section "Programme and consumption table" depending on the water pressure, water hardness and temperature, ambient temperature, amount and the type of laundry, auxiliary functions selected and the changes at the mains voltage.

With the **End Time** function, the startup of the programme may be delayed up to 24 hours. After pressing **End Time** button, the programme's estimated ending time is displayed. If the **End Time** is set, **End Time** indicator is illuminated.



In order for the End Time function is activated and the programme is completed at the end of the specified time, you must press **Start/Pause** button after adjusting the time.



If you want to cancel End Time function, turn the knob to **on and off** position. machine.



When you have activated the End Time function, do not add liquid detergent in the powder detergent compartment no 2. There is the risk of staining of the clothes.

- 1 Open the loading door, place the laundry and put detergent, etc.
- 2 Select the washing programme, temperature, spin speed and, if required, the auxiliary functions.
- 3 Set the end time of your choice by pressing the **End Time** button. **End Time** indicator illuminates.
- 4 Press **Start / Pause** button. Time countdown starts. “:” sign in the middle of the end time on the display starts flashing.

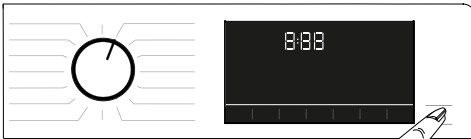


Additional laundry can be added into the machine during the End Time countdown. At the end of the countdown, End Time indicator turns off, washing cycle starts and the time of the selected programme appears on the display.

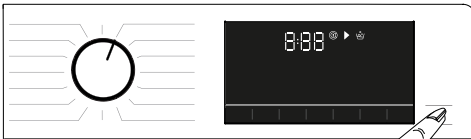
When the End Time selection is completed, the time appears on the screen consists of end time plus the duration of the selected programme.

4.3.10 Starting the programme

- 1 Press **Start / Pause** button to start the programme.
- 2 The **Start / Pause** button's light which was off before starts to illuminate steadily now, indicating that the programme has started.



- 3 Loading door is locked. The door lock symbol appears on the display after the loading door is locked.



- 4 Programme follow-up indicator lights on the display will show the current programme step.

4.3.11 Loading door lock

There is a locking system on the loading door of the machine that prevents opening of the loading door in cases when the water level is unsuitable.

"Door Locked" symbol appears on the display when the loading door is locked.



If the Remote Control Function is selected, the door will be locked. In order to open the door you must deactivate Remote Start Function by either pressing the Remote Start button or changing the program position.

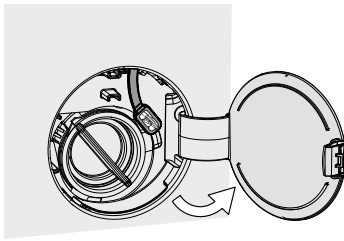
Opening the loading door in case of power failure:



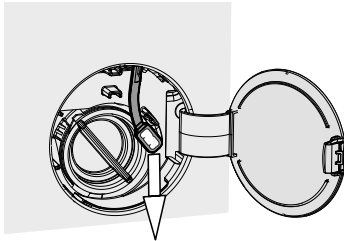
In case of power failure, you can use the loading door emergency handle under the pump filter cap to open the loading door manually.



WARNING: To avoid any water overflow before opening the loading door, make sure there is no water left inside the machine.



- Open the pump filter cap.



- Release the loading door emergency handle located at the rear side of the filter cap.
- Pull down the loading door emergency handle once and open the loading door. After opening the loading door, re-insert the loading door emergency handle.
- If the loading door does not open, try again by pulling down the handle.

4.3.12 Changing the selections after programme has started

Adding laundry after the programme has started :

If the water level in the machine is suitable when you press Start/Pause button, the door lock will be deactivated and the door will open, allowing you to add garments. The door lock icon on the display goes off when the door lock is deactivated. After adding garments, close the door and press **Start/Pause** button once again to resume the washing cycle.



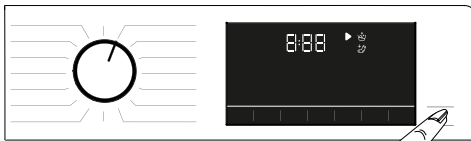
If the water level in the machine is not suitable when you press Start/Pause button, the door lock cannot be deactivated and the door lock icon on the display remains on.



If the temperature of the water inside the machine is above 50°C, you cannot deactivate the door lock for safety reasons, even if the water level is suitable.

Switching the machine to pause mode:

Press the Start/Pause button to switch the machine to pause mode. Pause symbol will flash on the display.



Changing the programme selection after programme has started:

The programme change is allowed when the current programme is running unless the Child Lock is enabled. This action will cancel the current programme.



The selected program starts anew.

Changing the auxiliary function, speed and temperature

Depending on the step the programme has reached, you can cancel or activate the auxiliary functions. See "Auxiliary function selection"

You can also change the speed and temperature settings. See "Speed selection" and "Temperature selection".



The loading door will not open if the water temperature in the machine is high or the water level is above the loading door baseline.

4.3.13 Cancelling the programme

The programme is cancelled when program selection knob is turned to a different programme or machine is turned off and on again using the program selection knob.



If you turn the program selection knob when the Child Lock is enabled, the programme will not be cancelled. You should cancel the Child Lock first.

If you want to open the loading door after you have cancelled the programme but it is not possible to open the loading door since the water level in the machine is above the loading door baseline, then turn the Programme Selection knob to Pump+Spin programme and drain the water in the machine.

4.3.14 End of programme

End symbol appears on the display when the programme is completed.

If you do not press any button for 10 minutes, the machine will switch to OFF mode. Display and all indicators are turned off.

Completed programme steps will be displayed if you press On/Off button.

4.3.15 HomeWhiz Feature and Remote Control Function

HomeWhiz allows you to use your smart device to check your washing machine and get information about its status. With HomeWhiz application you can use your smart device to perform various procedures that can also be performed on the machine. Plus, you can use some features only with the HomeWhiz function.

You must download the HomeWhiz application from the app store of your smart device to use the bluetooth feature of your machine.

Make sure that your smart device is connected to internet to install the app.

If you are using the app for the first time, please follow the on-screen instructions to complete your user account registration. Once the registration procedure is complete, you can use all products with the HomeWhiz feature in your house on this account.

You can touch "Add/Remove Appliance" HomeWhiz application to see the products paired with your account. You can perform user pairing procedures of these products on this page.

Once the application is installed, the HomeWhiz function allows your washing machine to send you push notifications through your smart device.



To use the HomeWhiz function, the app must be installed on your smart device and your washing machine must be paired to your smart device via bluetooth. If your washing machine is not paired to your smart device it works as an appliance which does not have a HomeWhiz feature.

Your product will operate as paired to your smart device via bluetooth. The controls made by means of the application will be enabled through this pairing; therefore the bluetooth signal strength between the appliance and the smart device must be adequate.

Please visit www.homewhiz.com to see the Android and iOS versions supported by the HomeWhiz application.



WARNING: All the safety measures described in "**GENERAL SAFETY INSTRUCTIONS**" section of your user manual apply to the remote operation through HomeWhiz function as well.

4.3.15.1 HomeWhiz Setup

In order for the application to run, a connection between your appliance and the HomeWhiz Application must be established. For this connection to be established you must follow the steps below for setup procedure on both the appliance and the HomeWhiz Application.

- If you are adding an appliance for the first time, tap „Add/Remove Appliance“ button on the HomeWhiz Application. After this step tap „Tap here to setup a new appliance“. Follow steps below as well as steps in the HomeWhiz Application to perform the setup.
- To start the setup, make sure that your machine is turned off. Press and hold the Temperature button and the Remote Control Function button simultaneously for 3 seconds to switch your machine to HomeWhiz setup mode.



- When the appliance is in HomeWhiz setup mode, you will see an animation on the display and the bluetooth icon will flash until your machine gets paired with smart device. Only programme knob will be active in this mode. Other buttons will be inactive.



- On the screen you see on the app, select the washing machine and press next.
- Proceed reading the on-screen instructions until HomeWhiz asks you about the product you wish to connect to your smart device.
- If your washing machine successfully pairs with your device, your display will automatically turn on in the normal mode and the bluetooth icon will remain on as you hear a setup successful melody from the appliance.
- Return to the HomeWhiz application and wait until the setup is complete. When setup is complete, give your washing machine a name. Now, you can tap and see the product you have added in the HomeWhiz Application.



If you cannot successfully perform the setup within 5 minutes, your washing machine will turn off automatically. In this case, you will have to start over the setup procedure. If the problem persists contact the Authorised Service Agent.

You can use your washing machine with more than one smart device. To do this, download the HomeWhiz app on the other smart device as well. When you launch the app, you will need to log in with the account you previously created and paired your washing machine. Otherwise, please read "Setting up a washing machine that is connected to someone else's account".



WARNING: You need internet connection on your smart device to proceed with HomeWhiz setup. Otherwise, the HomeWhiz application will not let you finish the setup procedure successfully. Please contact your internet service provider if you are having problems with your internet connection.



HomeWhiz Application may require you to type the product number shown on the product label. You can find the product label inside of the appliance door. The product number will be shown on the label.



4.3.15.2 Setting up a washing machine that is connected to someone else's account

If the washing machine you want to use was previously introduced to the system with someone else's account, you must establish a new connection between your HomeWhiz Application and the appliance.

- Download HomeWhiz Application on the new smart device you want to use.
- Create a new account and log in to this account on the HomeWhiz app.
- Follow the steps described in HomeWhiz Setup (4.3.15.1 HomeWhiz Setup) and proceed with the setup procedure.



Since the HomeWhiz Feature and Remote Control function on your appliance is operated via pairing using Bluetooth technology only one HomeWhiz application can operate it at a time.



WARNING: There is a limit to the smart devices that can be paired with the appliance. If this limit is exceeded, the first paired device will be deleted from the list of paired devices on the appliance and you will have to repeat the setup procedure on that particular smart device.

4.3.15.3 Remote Control function and its use

After HomeWhiz setup, bluetooth will automatically turn on. To activate or deactivate the bluetooth connection, please see 4.3.8.2 Bluetooth 3”.

If you turn off and on your machine while bluetooth is active, it will automatically reconnect. In cases such as paired device going off the range, bluetooth will automatically turn off. For this reason, you will need to turn on the bluetooth again if you want to use the Remote Control function.

You can check the bluetooth symbol on the display to track your connection status. If the symbol is continuously on, you have bluetooth connection. If the symbol is flashing, the product is trying to connect. If the symbol is off, you have no connection.



WARNING: When the bluetooth connection is on in your product, Remote Control function will be selectable. If the Remote Control function cannot be selected, check the connection status. If the connection cannot be established, repeat the initial set-up settings on the appliance.

WARNING: For safety reasons, the product's door will remain locked while the Remote Control function is enabled, independently of the operating mode. If you want to open the door of the product, you will need to turn the program selection knob or press the remote control key to deactivate the remote control function.

When you want to control your washing machine remotely, you need to activate the Remote Control function by pressing the Remote Control button while the programme knob is in the Download Program/Remote Control position button on the control panel of your washing machine. When your product is accessed, you will see a screen similar to the below.



When the Remote Control is on, you can only manage, turn-off and status follow-up operations through your washing machine. And all functions except child lock can be managed through the application.

You can follow whether the Remote Control function is On or Off through the function indicator on the button. If the Remote Control function is Off, all the operations are handled on the washing machine and only status follow-up is allowed on the application.

In the event that Remote Start function cannot be turned on, appliance will make a warning sound when you press the button. This might happen in cases such as when the appliance is turned on and there is no paired smart device via bluetooth. Bluetooth settings being Off or the washing machine's door being open are examples for such cases.

Once you activate this function on the washing machine, it will remain enabled apart from certain conditions and allow you to control your washing machine remotely via bluetooth.

In certain cases, it deactivates itself for safety reasons:

- When your washing machine undergoes a power interruption.
- When programme knob is turned and a different program selected or appliance is turned off.

4.3.15.4 Troubleshooting

Do the followings if you have a problem with controlling or connection. Observe whether the problem persists or not after the action you have performed. Do the following if the problem is not resolved.

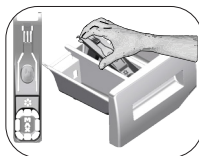
- Check whether your smart device is connected to the relevant home network.
- Restart the product application.
- Turn bluetooth off and then on via user control panel.
- If the connection cannot be established with the above processes, repeat the initial set-up settings on the washing machine.

If the problem persists, consult an Authorised Service Agent.

4.4 Maintenance and cleaning

Service life of product extends and frequently experienced problems will be reduced if it is cleaned at regular intervals.

4.4.1 Cleaning the detergent drawer



Clean the detergent drawer at regular intervals (every 4-5 washing cycles) as shown below in order to prevent accumulation of powder detergent in time. Lift the rear part of the siphon to remove it as illustrated.

If more than normal amount of water and softener mixture starts to gather in the softener compartment, the siphon must be cleaned.

- 1 Press the dotted point on the siphon in the softener compartment and pull towards you until the compartment is removed from the machine.
- 2 Wash the detergent drawer and the siphon with plenty of lukewarm water in a washbasin. In order to prevent the residues to contact your skin, clean it with an appropriate brush by wearing a pair of gloves.
- 3 Insert the drawer back into its place after cleaning and make sure that it is seated well.

4.4.2 Cleaning the loading door and the drum

For products with drum cleaning programme, please see Operating the product - Programmes.



Repeat Drum Cleaning process in every 2 months.

Use an detergent / anti-limescale suitable for the washing machines.



After every washing make sure that no foreign substance is left in the drum.

If the holes on the bellow shown in the figure is blocked, open the holes using a toothpick.

Foreign metal substances will cause rust stains in the drum. Clean the stains on the drum surface by using cleaning agents for stainless steel.

Never use steel wool or wire wool. These will damage the painted, chromated and plastic surfaces.

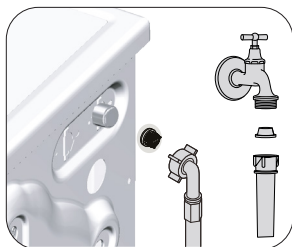
4.4.3 Cleaning the body and control panel

Wipe the body of the machine with soapy water or non-corrosive mild gel detergents as necessary, and dry with a soft cloth.

Use only a soft and damp cloth to clean the control panel.

4.4.4 Cleaning the water intake filters

There is a filter at the end of each water intake valve at the rear of the machine and also at the end of each water intake hose where they are connected to the tap. These filters prevent foreign substances and dirt in the water to enter the washing machine. Filters should be cleaned as they do get dirty.



1. Close the taps.
2. Remove the nuts of the water intake hoses to access the filters on the water intake valves. Clean them with an appropriate brush. If the filters are too dirty, remove them from their places with a pliers and clean in this way.
3. Take out the filters on the flat ends of the water intake hoses together with the gaskets and clean thoroughly under running water.
4. Replace the seals and filters carefully and tighten their nuts by hand.

4.4.5 Draining remaining water and cleaning the pump filter

The filter system in your machine prevents solid items such as buttons, coins and fabric fibers clogging the pump impeller during discharge of washing water. Thus, the water will be discharged without any problem and the service life of the pump will extend.

If the machine fails to drain water, the pump filter is clogged. Filter must be cleaned whenever it is clogged or in every 3 months. Water must be drained off first to clean the pump filter.

In addition, prior to transporting the machine (e.g., when moving to another house) and in case of freezing of the water, water may have to be drained completely.



CAUTION: Foreign substances left in the pump filter may damage your machine or may cause noise problem.

CAUTION: If the product is not being used, shut the tap shut, remove mains pipe and drain the water inside the machine against any likely freezing.

CAUTION: After each use, turn off the water tap to which the mains hose is connected.

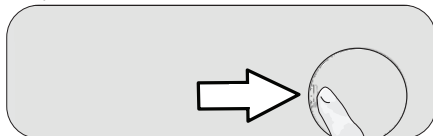
In order to clean the dirty filter and discharge the water:

1 Unplug the machine to cut off the supply power.



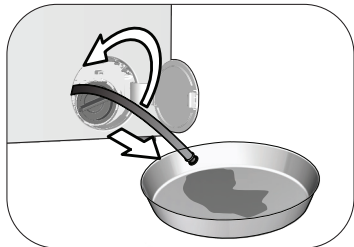
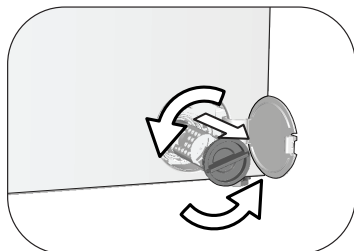
CAUTION: Temperature of the water inside the machine may rise up to 90 °C. To avoid the burning risk, clean the filter after the water inside the machine is cooled down.

2. Open the filter cover.



3 Follow the below procedures in order to drain water.

The product has an emergency water draining hose, in order to drain the water:



- Pull the emergency draining hose out from its seat
- Place a large container at the end of the hose. Drain the water into the container by pulling out the plug at the end of the hose. When the container is full, block the inlet of the hose by replacing the plug. After the container is emptied, repeat the above procedure to drain the water in the machine completely.
- When draining of water is finished, close the end by the plug again and fix the hose in its place.
- Turn and remove the pump filter.

4. Clean any residues inside the filter as well as fibers, if any, around the pump impeller region.

5. Replace the filter.

6. If the filter cap is composed of two pieces, close the filter cap by pressing on the tab. If it is one piece, seat the tabs in the lower part into their places first, and then press the upper part to close.

5 Troubleshooting

Problem	Cause	Solution
Programs do not start after the loading door is closed.	Start / Pause / Cancel button is not pressed.	<ul style="list-style-type: none"> Press Start / Pause / Cancel button.
	It may be difficult to close the loading door in case of excessive loading.	<ul style="list-style-type: none"> Reduce the amount of laundry and make sure that the loading door is closed properly.
Programme cannot be started or selected.	The product has switched to self protection mode due to a supply problem (line voltage, water pressure, etc.).	<ul style="list-style-type: none"> To cancel the programme, turn the Programme Selection knob to select another programme. Previous programme will be canceled. (see. "Cancellation of program")
Water inside the product.	Some water has remained in the product due to the quality control processes in the production.	<ul style="list-style-type: none"> This is not a failure; water is not harmful to the product.
The product does not take water in.	Tap is turned off.	<ul style="list-style-type: none"> Turn on the taps.
	Water inlet hose is bent.	<ul style="list-style-type: none"> Flatten the hose.
	Water inlet filter is clogged.	<ul style="list-style-type: none"> Clean the filter.
	Loading door is not closed.	<ul style="list-style-type: none"> Close the door.
The product does not drain water.	Water drain hose is clogged or twisted.	<ul style="list-style-type: none"> Clean or flatten the hose.
	Pump filter is clogged.	<ul style="list-style-type: none"> Clean the pump filter.
Product vibrates or makes noise.	Product is standing unbalanced.	<ul style="list-style-type: none"> Stable the product by adjusting the feet.
	A hard substance has entered into the pump filter.	<ul style="list-style-type: none"> Clean the pump filter.
	Transportation safety bolts are not removed.	<ul style="list-style-type: none"> Remove the transportation safety bolts.
	Laundry quantity in the product is too little.	<ul style="list-style-type: none"> Add more laundry to the product.
	Excessive laundry is loaded in the product.	<ul style="list-style-type: none"> Take out some of the laundry from the product or distribute the load by hand to balance it homogeneously in the product.
There is water leaking from the bottom of the product.	Product is leaning on a rigid item.	<ul style="list-style-type: none"> Make sure that the product is not leaning on anything.
	Water drain hose is clogged or twisted.	<ul style="list-style-type: none"> Clean or flatten the hose.
Product stopped shortly after the programme started.	Pump filter is clogged.	<ul style="list-style-type: none"> Clean the pump filter.
	Machine has stopped temporarily due to low voltage.	<ul style="list-style-type: none"> Product will resume running when the voltage restores to the normal level.
Product directly drains the water it takes in.	Draining hose is not at adequate height.	<ul style="list-style-type: none"> Connect the water draining hose as described in the user manual.
No water can be seen in the product during washing.	Water is inside the invisible part of the product.	<ul style="list-style-type: none"> This is not a failure.
Loading door cannot be opened.	Loading door lock is activated because of the water level in the product.	<ul style="list-style-type: none"> Drain the water by running the Pump or Spin programme.
	Product is heating up the water or it is at the spinning cycle.	<ul style="list-style-type: none"> Wait until the programme completes.
	Loading door may be stuck because of the pressure it is subjected to.	<ul style="list-style-type: none"> Grab the handle and push and pull the loading door to release and open it.
	If there is no power, loading door of the product will not open.	<ul style="list-style-type: none"> To open the loading door, open the pump filter cap and pull down the emergency handle positioned at the rear side of the said cap. See "Loading door lock"

Problem	Cause	Solution
Washing takes longer than specified in the user manual. (*)	Water pressure is low.	<ul style="list-style-type: none"> Product waits until taking in adequate amount of water to prevent poor washing quality due to the decreased amount of water. Therefore, the washing time extends.
	Voltage is low.	<ul style="list-style-type: none"> Washing time is prolonged to avoid poor washing results when the supply voltage is low.
	Input temperature of water is low.	<ul style="list-style-type: none"> Required time to heat up the water extends in cold seasons. Also, washing time can be lengthened to avoid poor washing results.
	Number of rinses and/or amount of rinse water have increased.	<ul style="list-style-type: none"> Product increases the amount of rinse water when good rinsing is needed and adds an extra rinsing step if necessary.
	Excessive foam has occurred and automatic foam absorption system has been activated due to too much detergent usage.	<ul style="list-style-type: none"> Use recommended amount of detergent.
Programme time does not countdown. (On models with display) (*)	Timer may stop during water intake.	<ul style="list-style-type: none"> Timer indicator will not countdown until the product takes in adequate amount of water. The product will wait until there is sufficient amount of water to avoid poor washing results due to lack of water. Timer indicator will resume countdown after this.
	Timer may stop during heating step.	<ul style="list-style-type: none"> Timer indicator will not countdown until the product reaches the selected temperature.
	Timer may stop during spinning step.	<ul style="list-style-type: none"> Automatic unbalanced load detection system is activated due to the unbalanced distribution of the laundry in the product.
Programme time does not countdown. (*)	There is unbalanced load in the product.	<ul style="list-style-type: none"> Automatic unbalanced load detection system is activated due to the unbalanced distribution of the laundry in the product.
Product does not switch to spinning step. (*)	There is unbalanced load in the product.	<ul style="list-style-type: none"> Automatic unbalanced load detection system is activated due to the unbalanced distribution of the laundry in the product.
	The product will not spin if water is not drained completely.	<ul style="list-style-type: none"> Check the filter and the draining hose.
	Excessive foam has occurred and automatic foam absorption system has been activated due to too much detergent usage.	<ul style="list-style-type: none"> Use recommended amount of detergent.
Washing performance is poor: Laundry turns gray. (**)	Insufficient amount of detergent has been used over a long period of time.	<ul style="list-style-type: none"> Use the recommended amount of detergent appropriate for water hardness and the laundry.
	Washing has been made at low temperatures for a long time.	<ul style="list-style-type: none"> Select the proper temperature for the laundry to be washed.
	Insufficient amount of detergent is used with hard water.	<ul style="list-style-type: none"> Using insufficient amount of detergent with hard water causes the soil to stick on the cloth and this turns the cloth into gray in time. It is difficult to eliminate graying once it happens. Use the recommended amount of detergent appropriate for water hardness and the laundry.
	Excessive amount of detergent is used.	<ul style="list-style-type: none"> Use the recommended amount of detergent appropriate for water hardness and the laundry.

Problem	Cause	Solution
Washing performance is poor: Stains persist or the laundry is not whitened. (**)	Insufficient amount of detergent is used.	<ul style="list-style-type: none"> Use the recommended amount of detergent appropriate for water hardness and the laundry.
	Excessive laundry is loaded in.	<ul style="list-style-type: none"> Do not load the product in excess. Load with amounts recommended in the "Programme and consumption table".
	Wrong programme and temperature were selected.	<ul style="list-style-type: none"> Select the proper programme and temperature for the laundry to be washed.
	Wrong type of detergent is used.	<ul style="list-style-type: none"> Use original detergent appropriate for the product.
	Excessive amount of detergent is used.	<ul style="list-style-type: none"> Put the detergent in the correct compartment. Do not mix the bleaching agent and the detergent with each other.
Washing performance is poor: Oily stains appeared on the laundry. (**)	Regular drum cleaning is not applied.	<ul style="list-style-type: none"> Clean the drum regularly. For this procedure, please see "Cleaning the loading door and the drum".
Washing performance is poor: Clothes smell unpleasantly. (**)	Odours and bacteria layers are formed on the drum as a result of continuous washing at lower temperatures and/or in short programmes.	<ul style="list-style-type: none"> Leave the detergent drawer as well as the loading door of the product ajar after each washing. Thus, a humid environment favorable for bacteria cannot occur in the machine.
Colour of the clothes faded. (**)	Excessive laundry was loaded in.	<ul style="list-style-type: none"> Do not load the product in excess.
	Detergent in use is damp.	<ul style="list-style-type: none"> Keep detergents closed in an environment free of humidity and do not expose them to excessive temperatures.
	A higher temperature was selected.	<ul style="list-style-type: none"> Select the proper programme and temperature according to the type and soiling degree of the laundry.
Washing machine does not rinse well.	The amount, brand and storage conditions of the detergent used are inappropriate.	<ul style="list-style-type: none"> Use a detergent appropriate for the washing machine and your laundry. Keep detergents closed in an environment free of humidity and do not expose them to excessive temperatures.
	Detergent was put in the wrong compartment.	<ul style="list-style-type: none"> If detergent is put in the prewash compartment although prewash cycle is not selected, the product can take this detergent during rinsing or softener step. Put the detergent in the correct compartment.
	Pump filter is clogged.	<ul style="list-style-type: none"> Check the filter.
	Drain hose is folded.	<ul style="list-style-type: none"> Check the drain hose.
Laundry became stiff after washing. (**)	Insufficient amount of detergent is used.	<ul style="list-style-type: none"> Using insufficient amount of detergent for the water hardness can cause the laundry to become stiff in time. Use appropriate amount of detergent according to the water hardness.
	Detergent was put in the wrong compartment.	<ul style="list-style-type: none"> If detergent is put in the prewash compartment although prewash cycle is not selected, the product can take this detergent during rinsing or softener step. Put the detergent in the correct compartment.
	Detergent was mixed with the softener.	<ul style="list-style-type: none"> Do not mix the softener with detergent. Wash and clean the drawer with hot water.
Laundry does not smell like the softener. (**)	Detergent was put in the wrong compartment.	<ul style="list-style-type: none"> If detergent is put in the prewash compartment although prewash cycle is not selected, the product can take this detergent during rinsing or softener step. Wash and clean the drawer with hot water. Put the detergent in the correct compartment.
	Detergent was mixed with the softener.	<ul style="list-style-type: none"> Do not mix the softener with detergent. Wash and clean the drawer with hot water.

Problem	Cause	Solution
Detergent residue in the detergent drawer. (**)	Detergent was put in wet drawer.	<ul style="list-style-type: none"> • Dry the detergent drawer before putting in detergent.
	Detergent has gotten damp.	<ul style="list-style-type: none"> • Keep detergents closed in an environment free of humidity and do not expose them to excessive temperatures.
	Water pressure is low.	<ul style="list-style-type: none"> • Check the water pressure.
	The detergent in the main wash compartment got wet while taking in the prewash water. Holes of the detergent compartment are blocked.	<ul style="list-style-type: none"> • Check the holes and clean if they are clogged.
	There is a problem with the detergent drawer valves.	<ul style="list-style-type: none"> • Call the Authorised Service Agent.
	Detergent was mixed with the softener.	<ul style="list-style-type: none"> • Do not mix the softener with detergent. Wash and clean the drawer with hot water.
	Regular drum cleaning is not applied.	<ul style="list-style-type: none"> • Clean the drum regularly. For this procedure, please see "Cleaning the loading door and the drum".
Too much foam forms inside the product. (**)	Improper detergents for the washing machine is used.	<ul style="list-style-type: none"> • Use detergents appropriate for the washing machine.
	Excessive amount of detergent is used.	<ul style="list-style-type: none"> • Use only sufficient amount of detergent.
	Detergent was stored under improper conditions.	<ul style="list-style-type: none"> • Store detergent in a closed and dry location. Do not store in excessively hot places.
	Some meshed laundry such as tulle may foam too much because of their texture.	<ul style="list-style-type: none"> • Use smaller amounts of detergent for this type of item.
	Detergent was put in the wrong compartment.	<ul style="list-style-type: none"> • Put the detergent in the correct compartment.
	Softener is being taken early by the product.	<ul style="list-style-type: none"> • There may be problem in the valves or in the detergent drawer. Call the Authorised Service Agent.
Foam is overflowing from the detergent drawer.	Too much detergent is used.	<ul style="list-style-type: none"> • Mix 1 tablespoonful softener and ½ l water and pour into the main wash compartment of the detergent drawer.
		<ul style="list-style-type: none"> • Put detergent into the product suitable for the programmes and maximum loads indicated in the "Programme and consumption table". When you use additional chemicals (stain removers, bleaches and etc.), reduce the amount of detergent.
Laundry remains wet at the end of the programme. (*)	Excessive foam has occurred and automatic foam absorption system has been activated due to too much detergent usage.	<ul style="list-style-type: none"> • Use recommended amount of detergent.

(*) The product does not switch to spinning step when the laundry is not evenly distributed in the drum to prevent any damage to the product and to its surrounding environment. Laundry should be rearranged and re-spun.

(**) Regular drum cleaning is not applied. Clean the drum regularly. See 4.4.2



WARNING: If you cannot eliminate the problem although you follow the instructions in this section, consult your dealer or the Authorised Service Agent. Never try to repair a nonfunctional product yourself.



WARNING: Check the HomeWhiz section for the relevant troubleshooting information.

beko

Pralni stroj

Uporabniški priročnik



WTV 8636 XS





Ta izdelek je bil proizveden z uporabo najnovejše tehnologije v okolju prijaznih pogojih.

1 Splošna varnostna navodila

V tem delu so opisana varnostna navodila za zaščito pred nastankom telesnih poškodb in škode. Neupoštevanje teh navodil pomeni izničenje vsakršnega jamstva.

1.1 Življenjska in premoženjska varnost

- ▶ Proizvoda nikoli ne postavite na tla, pokrita s preprogo, saj lahko to povzroči pregrevanje električnih delov zaradi pomanjkanja pretoka zraka pod strojem. Zaradi tega lahko pride do okvare vašega stroja.
- ▶ Ko stroj ni v uporabi, ga izklopite.
- ▶ Namestitvev in popravila lahko izvajajo le pooblašteni serviserji. Proizvajalec ne odgovarja za morebitne poškodbe, ki nastanejo med opravili, ki jih izvajajo nepooblaščen osebe.
- ▶ Cevi za dobavo in odjem vode je treba trdno pritrditi in potrditi, da niso poškodovane. V nasprotnem primeru obstaja možnost iztekanja vode.
- ▶ Če je v stroju voda, ne odpirajte vrat za nalaganje perila in ne poskušajte zamenjati filtra. V nasprotnem primeru obstaja možnost poplave in telesnih poškodb zaradi vroče vode.
- ▶ Zaklenjenih vratc za nalaganje ne odpirajte na silo. Blokada vratc se odpre takoj, ko se cikel pranja zaključi. Če se vratca ne odprejo, uporabite rešitve, ki so navedene za napako »Vratc za nalaganje ni mogoče odpreti« v razdelku Odpravljanje težav. Z odpiranjem vratc za nalaganje na silo lahko poškodujete vratca in blokirni mehanizem.
- ▶ Uporabljajte pralna sredstva, mehčalce in dodatke, primerne za avtomatske pralne stroje.
- ▶ Upoštevajte navodila na etiketah na perilu in na embalaži pralnega sredstva.

1.2 Varnost otrok

- ▶ Otroci, stari 8 let in več, ter osebe z zmanjšanimi fizičnimi, senzornimi ali duševnimi sposobnostmi ali s pomanjkljivim znanjem ali izkušnjami lahko stroj uporabljajo le pod nadzorom ali če so poučeni o varni uporabi izdelka in z njim povezanimi nevarnostmi. Otroci se ne smejo igrati s proizvodom. Otroci naj proizvoda ne čistijo ali vzdržujejo, če jih nihče ne nadzoruje. Otroci, mlajši od 3 let, naj se v bližini stroja ne zadržujejo brez stalnega nadzora.
- ▶ Embalažni material je nevaren za otroke. Embalažni material shranite na varno mesto, kamor otroci nimajo dostopa.

- ▶ Električni proizvodi so nevarni za otroke. Preprečite otrokom dostop v bližino stroja, medtem ko ta obratuje. Ne dovolite otrokom, da se igrajo s proizvodom. Uporabite otroško ključavnico in tako preprečite otrokom poseganje v proizvod.
- ▶ Ne pozabite zapreti vratc za nalaganje, preden zapustite prostor, v katerem je proizvod nameščen.
- ▶ Hranite vsa pralna sredstva in dodatke na varnem mestu, kamor otroci nimajo dostopa, ter zaprite pokrov vsebnika pralnega sredstva oziroma zatesnite embalažo pralnega sredstva.

1.3 Električna varnost

- ▶ V primeru kakršne koli okvare proizvoda ne uporabite, dokler okvare ne popravi pooblaščen serviser! Nevarnost električnega udara!
- ▶ Izdelek je oblikovan tako, da začne ponovno obratovati, ko se po izpadu elektrike napajanje ponovno vzpostavi. Če želite preklicati program, preberite poglavje »Preklic programa«.
- ▶ Stroj priključite v ozemljeno vtičnico, zaščiteno z varovalko z močjo 16 A. Poskrbite za ozemljeno namestitev, ki jo vzpostavi strokovno usposobljen električar. Naše podjetje ne odgovarja za poškodbe, ki nastanejo med uporabo proizvoda brez ozemljitve v skladu z lokalnimi predpisi.
- ▶ Stroja ni dovoljeno prati s curkom vode ali zlivanjem vode nanj. Nevarnost električnega udara!
- ▶ V nobenem primeru se ne dotikajte napajalnega kabla z mokrimi rokami! Kabla nikoli ne vlecite. Vedno z eno roko pritisnite na kabel in ga povlecite z drugo roko.
- ▶ Stroj je treba pred namestitvijo, vzdrževanjem, čiščenjem in popravili obvezno izklopiti.
- ▶ Če je napajalni kabel poškodovan, ga mora zamenjati proizvajalec, pooblaščen serviser ali podobno usposobljena oseba (po možnosti električar) ali oseba, ki jo je pooblastil uvoznik, saj boste tako preprečili morebitna tveganja.

1.4 Varnost pred vročo površino



Steklo vratc za nalaganje se lahko med pranjem pri višjih temperaturah zelo segreje. Zato bodite še posebej pozorni, da se otroci ne dotikajo stekla vrat za nalaganje med pranjem.

2 Pomembna navodila za okolje

2.1 Skladnost z direktivo OEE0



Ta izdelek je v skladu z direktivo EU OEE0 (2012/19/EU). Ta izdelek nosi oznako za odpadno električno in elektronsko opremo (OEE0).

Izdelek je bil proizveden z visokokakovostnimi deli in materiali, ki so primerni za ponovno uporabo in recikliranje. Zato izdelka ob koncu njegove življenjske dobe ne odstranite skupaj z običajnimi gospodinjskimi in drugimi odpadki. Odnosite ga na zbiralno mesto za recikliranje električne in elektronske opreme. Prosimo, da se glede najbližjih zbirnih mest posvetujete z lokalnimi oblastmi.

Skladnost z direktivo RoHS (omejevanje uporabe nekaterih nevarnih snovi):

Ta izdelek je v skladu z direktivo EU RoHS (2011/65/EU). Ne vsebuje nevarnih in prepovedanih materialov, ki so določeni v direktivi.

2.2 Podatki o embalaži

Embalaža je izdelana iz recikliranega materiala v skladu z našimi državnimi okoljevarstvenimi predpisi. Embalaže ne odstranite skupaj z gospodinjskimi ali ostalimi odpadki. Odnosite jih na zbiralna mesta za embalaže, ki so jih določile lokalne oblasti.

3 Pravilna uporaba

- Stroj je oblikovan in izdelan za uporabo v gospodinjstvih. Stroj ni primeren za uporabo v komercialne namene in druge nenačrtovane namene.
- Proizvod je dovoljeno uporabljati za pranje in izpiranje perila, ki je ustrezno označeno.
- Proizvajalec ne odgovarja za nepravilno uporabo ali prevoz.
- Tehnična življenjska doba stroja je 10 let. V tem obdobju vam bodo na voljo originalni rezervni deli za pravilno delovanje naprave.
- Ta aparat je namenjen za uporabo v gospodinjstvih in podobnih aplikacijah, kot so:
 - kuhinjske prostore osebja v trgovinah, pisarnah in drugih delovnih okoljih;
 - kmečke hiše;
 - s strani strank v hotelih, motelih in drugih stanovanjskih okoljih;
 - okolja z nočitvijo in zajtrkom;
 - območja za komunalno rabo v stanovanjskih blokih ali v pralnicah.

4 Tehnične specifikacije

Skladno z delegirano uredbo komisije (EU) št. 1061/2010

Ime dobavitelja ali blagovna znamka	Beko
Naziv modela	WTV 8636 XS
Nazivna kapaciteta (kg)	8
Razred energijske učinkovitosti/Razpon od A+++ (najvišja učinkovitost) do D (najnižja učinkovitost)	A+++
Letna poraba energije (kWh) ⁽¹⁾	175
Poraba energije standardnega programa bombaž pri 60 °C pri polni obremenitvi (kWh)	0.910
Poraba energije standardnega programa za pranje bombaža pri 60 °C pri delni napolnjenosti stroja (kWh)	0.714
Poraba energije standardnega programa bombaž pri 40 °C pri delni obremenitvi (kWh)	0.649
Poraba energije v izklopljenem načinu (W)	0.500
Poraba energije v načinu pripravljenost (W)	0.500
Letna poraba vode (l) ⁽²⁾	10559
Razred učinkovitosti ožemanja/razpon od A (najvišja učinkovitost) do G (najnižja učinkovitost)	B
Najvišja hitrost centrifuge (vrt./min.)	1200
Preostala vsebnost vlage (%)	53
Standardni program za pranje bombaža ⁽³⁾	Puuvillaeko 60°C ja 40°C
Čas trajanja standardnega programa bombaž pri 60 °C pri polni obremenitvi (min)	260
Trajanje programa standardnega programa za pranje bombaža pri 60 °C pri delni napolnjenosti stroja (min)	235
Čas trajanja standardnega programa bombaž pri 40 °C pri delni obremenitvi (min)	235
Trajanje časa pripravljenosti (min)	N/A
Emisije hrupa v zraku pri pranju/centrifugiranju (dB)	54/75
Vgrajeno	Non
Višina (cm)	84
Širina (cm)	60
Globina (cm)	59
Neto teža (±4 kg)	67
Enojni dotok vode/dvojni dotok vode	• / -
• Na voljo	
Električna poraba (V/Hz)	230 V / 50Hz
Skupni tok (A)	10
Skupna moč (W)	2200
Koda glavnega modela	1311
⁽¹⁾ Poraba energije temelji na 220 standardnih pralnih ciklih s programom za pranje bombaža pri 60 °C in 40 °C pri polni in delni napolnjenosti stroja in v načinu za nizko porabo energije. Dejanska poraba energije bo odvisna od načina uporabe naprave.	
⁽²⁾ Poraba vode temelji na 220 standardnih pralnih ciklih s programom za pranje bombaža pri 60 °C in 40 °C pri polni in delni napolnjenosti stroja. Dejanska poraba vode bo odvisna od načina uporabe naprave.	
⁽³⁾ »Standardni program za pranje bombaža pri 60 °C« in »Standardni program za pranje bombaža pri 40 °C« sta standardna programa za pranje, na katera se nanašajo podatki na energijski nalepki in podatkovni kartici. Programa sta primerna za pranje običajno umazanega bombažnega perila in sta najbolj učinkovita programa glede na kombinirano porabo energije in vode.	
Pridržane pravice do sprememb tehničnih specifikacij z namenom izboljšati kakovosti proizvoda brez predhodnega obvestila.	



OPOZORILO: Vrednosti porabe so veljavne le za primere, ko povezava z brezžičnim omrežjem ni vzpostavljena.

4.1 Namestitev

- Namestitev pralnega stroja naročite pri lokalnem pooblaščenem serviserju.
- Priprava lokacije in napeljave za električno energijo, vodo in odpadno vodo na mestu postavitve so dolžnost in odgovornost kupca.
- Preverite in potrdite, da med potiskanjem stroja na mesto postavitve ali med čiščenjem niste zvili, stisnili ali zdrobili dovodne in odjemne vodne cevi ter električnega kabla.
- Namestitev in električne priključke naprave naj opravi pooblaščen serviser. Proizvajalec ne odgovarja za morebitne poškodbe, ki nastanejo med opravili, ki jih izvajajo nepooblaščeni delavci.
- Pred namestitvijo s prostim očesom pralni stroj preglejte in potrdite, da ni poškodovan. Če odkrijete poškodbe, stroja ne namestite. Poškodovani stroji so nevarni.

4.1.1 Primerno mesto za postavitev

- Napravo postavite na trda in ravna tla. Stroja ne postavljajte na preprogo z daljšimi nitmi ali podobne površine.
- Skupna teža pralnega stroja in sušilnika (naložena), postavljena eden na drugega, je približno 180 kg. Stroj postavite na trda in ravna tla z zadostno nosilnostjo.
- Stroja ne postavite na napajalni kabel.
- Stroja ne namestite na mesta, kjer temperatura pade pod 0 °C.
- Če pustite prostor ob straneh stroja, naj bi to zmanjšalo vibracije in hrup.
- Stroja ne postavite na rob ali na ploščad stopničaste površine.
- Ne polagajte virov toplote, kot so kuhalne plošče, likalniki, pečice itd., na pralni stroj in jih ne uporabljajte na izdelku.

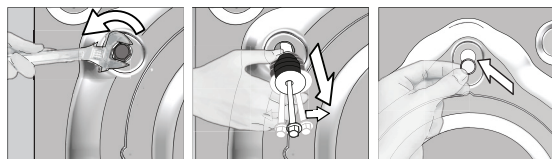
4.1.2 Odstranjevanje embalažnih ojačitev



Stroj nagnite nazaj in odstranite ojačitev. Povlecite za trak in odstranite embalažno ojačitev. Tega ne izvajajte sami.

4.1.3 Odstranjevanje varoval za prevoz in prenašanje

- 1 Z ustreznim ključem odvijte vse vijake, tako da se lahko neovirano vrtijo.
- 2 Odstranite vijake za zaščito med prevozom in prenašanjem, in sicer tako, da jih narahlo zavrtite.
- 3 V luknje na plošči zadaj vstavite plastične pokrove iz vrečke, v kateri je priročnik za uporabnika.



POZOR: Preden pralni stroj zaženete, odstranite vijake za zaščito med prevozom in prenašanjem! V nasprotnem primeru lahko pride do poškodbe naprave.



Vijake za zaščito med prevozom in prenašanjem shranite na varno mesto, tako da jih boste lahko uporabili, ko boste naslednjič premikali stroj.

Namestite vijake za zaščito med prevozom in prenašanjem v obratnem vrstnem redu demontaže.

Preden stroj premaknete na drugo mesto, obvezno pritrdite vijake za zaščito med prevozom in prenašanjem!

4.1.4 Povezava dovodne cevi za vodo

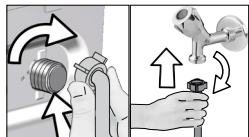


Vodni tlak, potreben za pravilno obratovanje stroja, je 1-10 barov (0,1-10 MPa). Za neovirano delovanje stroja mora v eni minuti iz odprte pipe steči 10-80 litrov vode. Če je vodni tlak višji, namestite reducirni ventil.



POZOR: Modele z enim dovodom za vodo ni dovoljeno povezati na pipe za toplo vodo. Nevarnost poškodb perila ali preklopa stroja v varen način, tj. stroj ne deluje.

POZOR: Na nov stroj ne povežite starih ali uporabljenih dovodnih cevi. Nevarnost pojava madežev na perilu.



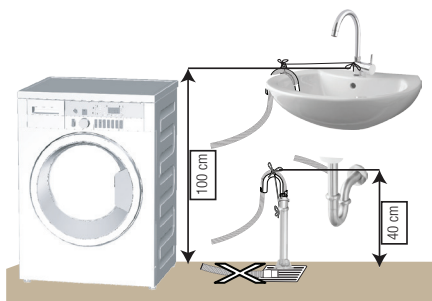
- 1 Z roko privijte matice na cevi. Matic ne privijajte z orodjem.
- 2 Potem ko napeljete cevi, odprite pipe do konca giba in potrdite, da spoji tesnijo. Če opazite uhajanje vode, zaprite pipo in odstranite matico. Preglejte tesnilo in ponovno privijte matico. Za zaščito pred uhajanjem vode in posledične škode zaprite pipe, ko stroja ne uporabljate.

4.1.5 Povezava odtočne cevi na odtok

- Pritrdite konec odtočne cevi neposredno na odtok za odpadno vodo, stranišče ali kopalno kad.



POZOR: Nevarnost poplave v primeru izpada cevi iz ohišja med izpustom vode. Tudi nevarnost opeklin zaradi visokih temperatur med pranjem. Preprečite takšne situacije in poskrbite za neovirano dovajanje in odvajanje vode tako, da tesno pritrdite odtočno cev.



- Namestite odtočno cev na višino min. 40 cm in maks. 100 cm.
- Če odtočno cev dvignete po tem, ko je ležala na tleh ali v bližini tal (manj kot 40 cm nad tlemi), je odvajanje vode oteženo in perilo ostane po pranju preveč mokro. Zato upoštevajte višine, kot so označene na sliki.

- Za zaščito pred stekanjem onesnažene vode nazaj v stroj in za neoviran odjem takšne vode ne potopite končnega dela cevi v onesnaženo vodo in ne povežite v odtok več kot 15 cm cevi. Če je cev predolga, jo odrežite.
- Končnega dela cevi ni dovoljeno upogniti, nanj stopati in cev ne sme biti stisnjena ob odtok in stroj.
- Če je cev prekratka, dodajte originalni podaljšek. Maks. dovoljena dolžina cevi je 3,2 m. Povezavo med podaljškom cevi in odtočno cevjo stroja je treba dobro pritrditi z ustrežno objemko, tako da se ne more sneti in puščati.

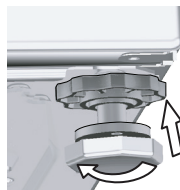
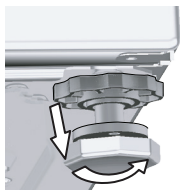
4.1.6 Namestitev nogic



POZOR: Stroj mora stati uravnoveženo na nogicah, tako da obratuje tiho in brez vibracij. Uravnovežite stroj tako, da nastavite nogice. V nasprotnem primeru se stroj med obratovanjem premika - nevarnost stiskanja in vibracij.

POZOR: Blokirnih matic ne odvijajte z orodjem. Matica lahko poškodujete.

- 1 Z roko odvijte blokirne matice na nogicah.
- 2 Nastavite nogice, tako da stroj uravnovežite.
- 3 Z roko privijte vse blokirne matice.



4.1.7 Električna povezava

Priljučite stroj v ozemljeno vtičnico, zaščiteno s 16 A varovalko. Naše podjetje ne odgovarja za poškodbe, ki nastanejo med uporabo proizvoda brez ozemljitve v skladu z lokalnimi predpisi.

- Povezava mora biti v skladu z veljavnimi državnimi predpisi.
- Ožičenje tokokroga električne vtičnice mora izpolnjevati zahteve naprave. Priporočamo uporabo prekinjevalca tokokroga GFCI.
- Poskrbite, da bo vtič napajalnega kabla po namestitvi dostopen brez težav.
- Če je vrednost toka varovalke ali prekinjala v ohišju manjša od 16 A, pokličite strokovno usposobljenega električarja, da namesti varovalko 16 A.
- Predpisana napetost v »Tehničnih specifikacijah« mora biti enaka omrežju napetosti.
- Povezav ni dovoljeno vzpostavljati s podaljški ali več vtiči.



POZOR: Poškodovane električne kable zamenja pooblaščen servisier.

4.1.8 Prva uporaba



Pred prvo uporabo stroja preverite in potrdite, da ste ustrezno opravili vsa pripravljala dela po navodilih iz poglavij »Pomembna varnostna navodila« in »Namestitev«.

Stroj pripravite na pranje perila tako, da najprej zaženete program Čiščenje bobna. Če stroj ne vključuje tega programa, uporabite metodo, ki je opisana v razdelku 4.4.2.



Uporabljajte sredstvo za zaščito pred nastajanjem vodnega kamna, primerno za pralne stroje.

Po opravljenih procesih za nadzor kakovosti med proizvodnjo je morda v stroju ostala manjša količina vode. Ta voda ne predstavlja nevarnosti za stroj.

4.2 Priprava

4.2.1 Sortiranje perila

- Sortirajte perilo po vrsti tkanine, barvi, umazanosti ter dovoljeni temperaturi pranja.
- Vedno preberite navodila, navedena na etiketi oblačila.

4.2.2 Priprava perila za pranje

- Perilo s kovinskimi dodatki, kot so nedrčki z žico, pasne sponke in kovinski gumbi, lahko stroj poškoduje. Odstranite kovinske dele ali dajte tako perilo v pralne vrečke oziroma prevleko za vzglavnik.
- Spraznite žepe, vzemite ven kovance, svinčnike in sponke; žepe obrnite in jih očistite. Takšni predmeti lahko poškodujejo stroj in med pranjem ustvarjajo hrup.
- Za majhna oblačila, kot so otroške nogavice in najlon nogavice, uporabite pralno vrečko ali prevleko za vzglavnik.
- Zavesa položite v stroj brez tlačenja. Odstranite elemente za pritrditev zaves.
- Zaprite zadrge, prišijte zrahljane gume in popravite razporke in raztrge.
- Za oblačila, označena z oznako "strojno pranje" in "ročno pranje", nastavite ustrezen program pranja.
- Ne perite skupaj barvnega in belega perila. Nova in temna barvna oblačila spustijo barvo. Perite jih ločeno.
- Trdovratne madeže primerno obdelajte že pred pranjem. Če niste prepričani, se posvetujte z osebjem v čistilnici.
- Uporabljajte samo barve/izdelke za spreminjanje barve in odstranjevanje vodnega kamna, ki so primerni za strojno pranje. Obvezno upoštevajte navodila na embalaži.
- Hlače in občutljivo perilo pred pranjem obrnite na notranjo stran.
- Oblačila iz angora volne pred pranjem pustite nekaj ur v zamrzovalniku. Tako boste zmanjšali kosmatenje.
- Perilo, umazano z moko, prahom, mlekom v prahu itd. najprej močno otresite in šele nato naložite v stroj. Prah in praški na perilu se lahko v notranjih delih stroja čez čas nakopičijo ter povzročijo škodo.

4.2.3 Nasveti za prihranek energije

Z upoštevanjem navodil v nadaljevanju boste zagotovili energijsko učinkovito in okolju manj škodljivo uporabo pralnega stroja.

- Stroj zaženite z maks. zmoglostjo izbranega programa, vendar ga ne preobremenite. Glej »Preglednica programov in porabe«.
- Obvezno upoštevajte navodila za temperaturo na embalaži pralnega sredstva.
- Manj umazano perilo perite z nizkimi temperaturami.
- Za manjše količine manj umazanega perila nastavite programe hitrega pranja.
- Ne nastavite predpranja in visokih temperatur za pranje perila, ki ni zelo umazano ali zamazano.
- Če boste perilo posušili v sušilnem stroju, med pranjem izberite največjo priporočljivo hitrost centrifugiranja.
- Uporabite toliko pralnega sredstva, kot ga priporoča etiketa na embalaži pralnega sredstva.

4.2.4 Nalaganje perila

1. Odprite vratca za nalaganje perila.
2. Perilo nežno vstavite v stroj.
3. Potisnite vratca za nalaganje, tako da se zaprejo - zaslišite, kako se zaskočijo. Prepričajte se, da se oblačila niso zataknila v vratih. Med delovanjem programa so vratca blokirana. Blokada vratc se odpre takoj, ko se program pranja zaključi. Nato lahko odprete vratca za nalaganje perila. Če se vratca ne odprejo, uporabite rešitve, ki so navedene za napako »Vratca za nalaganje ni mogoče odpreti« v razdelku Odpravljanje težav.

4.2.5 Ustrezna količina perila

Največja količina perila je odvisna od vrste perila, stopnje umazanosti in želenega programa pranja. Stroj količino vode samodejno nastavi glede na težo naloženega perila.

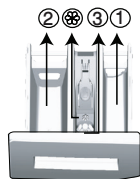


OPOZORILO: Upoštevajte informacije v razdelku »Preglednica programov in porabe«. Če boste naložili preveč perila v stroj, bodo rezultati pranja slabši. Poleg tega bo stroj obratoval hrupno in vibriral.

4.2.6 Uporaba pralnega sredstva in mehčalca



Ob uporabi pralnega sredstva, mehčalca, škroba, barvila, belilnega sredstva ali sredstva za odstranjevanje vodnega kamna pozorno preberite navodila proizvajalca na embalaži in upoštevajte navodila za odmerjanje. Uporabite merilno čašo, če je na voljo.



Predal za pralno sredstvo sestavljajo trije predelki:

- (1) za predpranje,
- (2) za glavno pranje,
- (3) za mehčalec.
- (⊗) V predelku za mehčalec je tudi sifonski kos.

Pralno sredstvo, mehčalec in druga čistilna sredstva

- Pralno sredstvo in mehčalec dodajte, preden zaženete program pranja.
- Predal za pralno sredstvo mora biti med pranjem zaprt.
- Če nastavite program brez predpranja, ne dodajte pralnega sredstva v predelek za predpranje (predelek št. »1«).
- Če nastavite program s predpranjem, ne dodajte tekočega pralnega sredstva v predelek za predpranje (predelek št. »1«).
- Če ste v boben naložili vrečko s pralnim sredstvom ali pralno kroglico, ne nastavite programa s predpranjem. Vrečko s pralnim sredstvom ali pralno kroglico dajte med perilo v stroju.
- Če uporabljate tekoče pralno sredstvo, ne pozabite dati lončka s tekočim pralnim sredstvom v predelek za pranje (predelek št. »2«).

Vrsta pralnega sredstva

Vrsta pralnega sredstva je odvisna od vrste in barve tkanin.

- Za barvno perilo uporabljajte drugo vrsto pralnega sredstva kot za belo perilo.
- Občutljivo perilo perite s posebnimi pralnimi sredstvi (tekoče pralno sredstvo, šampon za volno itd.), ki so izdelana posebej za občutljivo perilo.
- Za pranje temnih oblačil in prešitih odev je priporočljiva uporaba tekočega pralnega sredstva.
- Volnena oblačila perite s pralnim sredstvom za volno.



OPOZORILO: Uporabljajte le pralna sredstva, izdelana za uporabo v pralnih strojih.

OPOZORILO: Ne uporabljajte milnih praškov.

Nastavitev količine pralnega sredstva

Količina pralnega sredstva je odvisna od količine perila, umazanosti perila in trdote vode.

- Ne dozirajte več, kot velja priporočilo na embalaži pralnega sredstva; posledica nepravilnega doziranja so premočno penjenje, slabo izpiranje, stroškovna neučinkovitost in okolju škodljivo ravnanje.
- Za manjšo količino perila ali ne zelo umazano perilo uporabite manj pralnega praška.

Uporaba mehčalcev

Mehčalec dolijte v ustrezen predelek v predalu za pralno sredstvo.

- Ne vlijte nad oznako (> max <) v predelku za mehčalec.
- Mehčalec, ki ni več v tekočem stanju, razredčite z vodo, preden ga vlijete v predelek za pralno sredstvo.

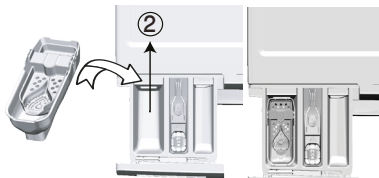


OPOZORILO: Za mehčanje oblačil ne uporabljajte tekočih pralnih sredstev ali drugih čistilnih sredstev, razen mehčalca, ki je proizveden za uporabo v pralnih strojih.

Uporaba tekočih pralnih sredstev

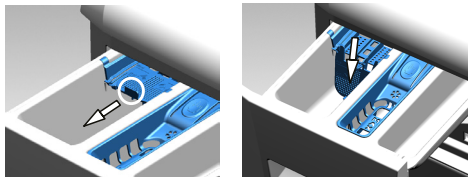
Če je na voljo lonček za tekoče pralno sredstvo:

- Dajte lonček za tekoče pralno sredstvo v predelek št. »2«.
- Tekoče pralno sredstvo, ki ni več v tekočem stanju, razredčite z vodo, preden ga vlijete v predal za pralno sredstvo.



Če je izdelek opremljen z delom za tekoči detergent:

- Ko želite uporabiti tekoče pralno sredstvo, poylecite pripomoček proti sebi. Del, ki pade navzdol, bo služil kot ovira za tekoče pralno sredstvo. Če je potrebno, očistite pripomoček z vodo, medtem ko je nameščen ali pa ga najprej odstranite. Če boste uporabili pralni prašek, mora biti pripomoček pritrjen v zgornjem položaju.



Če ni lončka za tekoče pralno sredstvo:

- Za program s predpranjem ne uporabite tekočega pralnega sredstva
- Tekoče pralno sredstvo lahko pustite madeže na oblačilih, ko uporabite funkcijo končnega časa za kasnejši zagon programa. Če načrtujete uporabo funkcije končnega časa, ne uporabite tekočega pralnega sredstva.

Uporaba pralnega sredstva v obliki gela ali tablete

- Če je gel zaradi svoje gostote v tekočem stanju in stroj ni opremljen s posebnim predelkom za tekoče pralno sredstvo, dolijte gel v predelek za glavno pranje, in sicer med prvim dovajanjem vode. Če je stroj opremljen s predelkom za tekoče pralno sredstvo, vlijte pralno sredstvo v predelek, preden zaženete program.
- Gel, ki zaradi svoje gostote ni v tekočem stanju, ali gel v kapsuli, pred pranjem vstavite neposredno v boben.
- Pralno sredstvo v obliki tablet dajte pred pranjem v predelek za pranje (predelek št. »2«) ali neposredno v boben.

Uporaba apreture

- V predelek za mehčalec dodajte tekoči škrob, škrob v prahu ali barvilo.
- Mehčalca in škroba med pranjem ne uporabljajte skupaj.
- Po uporabi škroba notranjost stroja obrišite z vlažno in čisto krpo.

Uporaba sredstev za odstranjevanje vodnega kamna

- Po potrebi uporabite sredstvo za odstranjevanje vodnega kamna, posebej izdelano za pralne stroje.







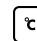













Uporaba belil

- Izberite program s predpranjem in dodajte belilno sredstvo, ko se zažene predpranje. V predelek za predpranje ne dodajte pralnega sredstva. Druga možnost je, da nastavite program z dodatnim izpiranjem in dodate belilno sredstvo med tem, ko stroj med prvim izpiranjem prejema vodo iz predelka za pralno sredstvo.
- Ne mešajte belilnega in pralnega sredstva.
- Uporabite le majhno količino (pribl. 50 ml) belilnega sredstva in dobro izperite oblačila zaradi morebitnega draženja kože.
- Belila ne vlivajte na perilo.

- Ne uporabljajte ga z barvnim perilom.
- Če uporabljate belilno sredstvo na osnovi kisika, izberite program za pranje pri nizkih temperaturah.
- Belilno sredstvo na osnovi kisika se lahko uporablja skupaj s pralnim sredstvom. Če gostota belilnega sredstva ni enaka gostoti pralnega sredstva, dodajte najprej pralno sredstvo v predelek št. »2« predala za pralno sredstvo in počakajte, da pralno sredstvo steče z vodo, ki se dovaja v stroj. Medtem ko se voda dovaja v stroj, dodajte belilno sredstvo v isti predelek.

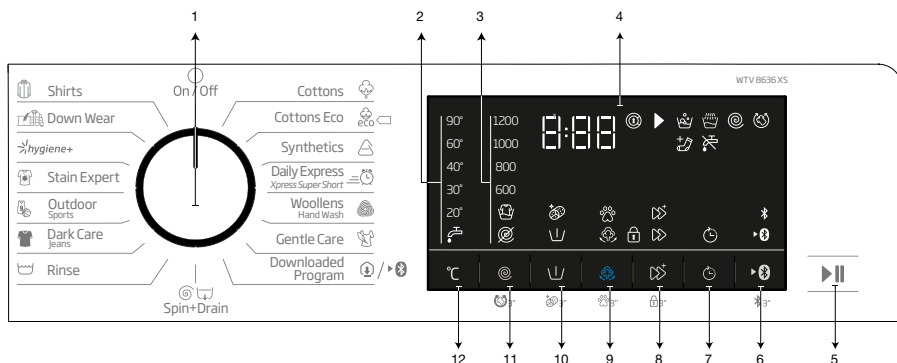
4.2.7 Nasveti za učinkovito pranje

		Oblačila			
		Svetle barve in belo perilo	Barve	Črna/temne barve	Občutljivo/volneno/svileno perilo
		(Priporočljive temperature glede stopnje umazanosti: 40-90 °C)	(Priporočljive temperature glede stopnje umazanosti: hladno - 40 °C)	(Priporočljive temperature glede stopnje umazanosti: hladno - 40 °C)	(Priporočljive temperature glede stopnje umazanosti: hladno - 30 °C)
Stopnja umazanosti	Močno umazano (Trdovratni madeži, kot so trava, kava, sadje in kri)	Morda bo treba madeže predhodno obdelati ali vklopiti predpranje. Prah in tekoča pralna sredstva, priporočljiva za belo perilo, lahko uporabljate v enakih količinah kot za močno umazana oblačila. Za odstranjevanje blatnih madežev in madežev, ki so občutljivi na belilo, uporabljajte sredstva v prahu.	Prah in tekoča pralna sredstva priporočljiva za pisano perilo lahko uporabljate v enakih količinah kot za močno umazana oblačila. Za odstranjevanje blatnih madežev in madežev, ki so občutljivi na belilo, uporabljajte sredstva v prahu. Uporabite lahko pralna sredstva, ki ne vsebujejo belila.	Tekoča pralna sredstva priporočljiva za pisano in temno perilo lahko uporabljate v enakih količinah kot za močno umazana oblačila.	Tekoča pralna sredstva za občutljiva oblačila. Volnena in svilena oblačila perite s posebnimi pralnimi sredstvi za volno.
	Običajno umazano (Na primer madeži na ovratnikih in manšetah)	Prah in tekoča pralna sredstva, priporočljiva za belo perilo, lahko uporabljate v enakih količinah kot za običajno umazana oblačila.	Prah in tekoča pralna sredstva priporočljiva za pisano perilo lahko uporabljate v enakih količinah kot za običajno umazana oblačila. Uporabite lahko pralna sredstva, ki ne vsebujejo belila.	Tekoča pralna sredstva priporočljiva za pisano in temno perilo lahko uporabljate v enakih količinah kot za običajno umazana oblačila.	Tekoča pralna sredstva za občutljiva oblačila. Volnena in svilena oblačila perite s posebnimi pralnimi sredstvi za volno.
	Manj umazano (Ni vidnih madežev)	Prah in tekoča pralna sredstva, priporočljiva za belo perilo, lahko uporabljate v enakih količinah kot za manj umazana oblačila.	Prah in tekoča pralna sredstva priporočljiva za pisano perilo lahko uporabljate v enakih količinah kot za manj umazana oblačila. Uporabite lahko pralna sredstva, ki ne vsebujejo belila.	Tekoča pralna sredstva priporočljiva za pisano in temno perilo lahko uporabljate v enakih količinah kot za manj umazana oblačila.	Tekoča pralna sredstva za občutljiva oblačila. Volnena in svilena oblačila perite s posebnimi pralnimi sredstvi za volno.

											
Prepranje	Hitro+	Dodatno izpiranje	Odstranjevanje dlak	Proti mečkanju	Nočni način	Temperatura	Cetrifugiranje	Izklop centrifuge	Hladno	Zadržaj izpiranje	Časovni zamik
											
Samodejno odmerjanje	Izpiranje	Centrifugiranje in črpanje vode	Hitro+	Para (Steam)	Odstranjevanje dlak domačih živali	Hladno	sušenja				

4.3 Uporaba stroja

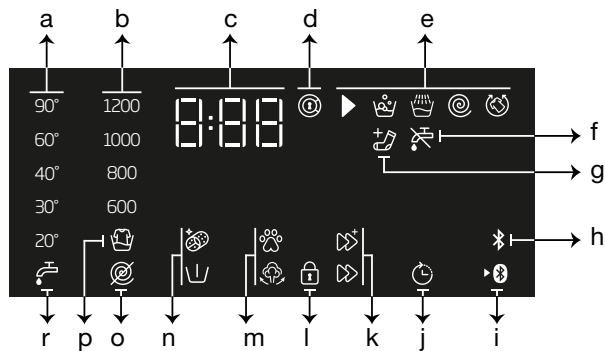
4.3.1 Nadzorna plošča



- 1 - Gumb za izbiro programa
- 2 - Lučke za vrednosti temperature
- 3 - Indikatorske lučke stopnje centrifugiranja
- 4 - Zaslon
- 5 - Gumb za zagon/premor
- 6 - Gumb za daljinsko upravljanje

- 7 - Gumb za nastavitev končnega časa
- 8 - Gumb za dodatno funkcijo 3
- 9 - Gumb za dodatno funkcijo 2
- 10 - Gumb za dodatno funkcijo 1
- 11 - Gumb za nastavitev hitrosti centrifugiranja
- 12 - Gumb za nastavitev temperature

4.3.2 Prikazani simboli



- | | |
|---------------------------------------|---|
| a- Indikator temperature | j- Indikator za vklopljeno zakasnitev zagona |
| b- Indikator hitrosti centrifugiranja | k- Indikator pomožne funkcije 3 |
| c- Informacije o trajanju | l- Simbol za otroško zaščito |
| d- Simbol za zaklenjena vratca | m- Indikator pomožne funkcije 2 |
| e- Indikator naslednjega programa | n- Indikator pomožne funkcije 1 |
| f- Indikator za pomanjkanje vode | o- Indikator za funkcijo brez centrifugiranja |
| g- Indikator za dodajanje oblačil | p- Indikator zadržanja izpiranja |
| h- Indikator Bluetooth povezave | r- Indikator za hladno vodo |
| i- Indikator za daljinsko upravljanje | |



Slike, ki so uporabljene za opis stroja v tem delu, so shematične in morda ne ustrezajo natančno funkcijam stroja.

4.3.3 Preglednica programov in porabe

SL	Program	Največja obremenitev (kg)	Poraba vode (l)	Poraba energije (kWh)	Maks. hitrost***	Pomožna funkcija					Izbirni temperaturni razpon °C
						Para	Hitro+	Predpranje	Odstranjevanje dlak	Proti mečkanju+	
Cottons	90	8	95	2,40	1200	•	•	•	•	•	Hladno-90
	60	8	95	1,80	1200	•	•	•	•	•	Hladno-90
	40	8	93	0,97	1200	•	•	•	•	•	Hladno-90
Cottons Eco	60**	8	53,6	0,910	1200						Hladno-60
	60**	4	44,4	0,714	1200						Hladno-60
	40**	4	43,2	0,649	1200						Hladno-60
Synthetics	60	3	71	1,35	1200	•	•	•	•	•	Hladno-60
	40	3	67	0,85	1200	•	•	•	•	•	Hladno-60
Daily Express / Xpress Super Short	90	8	66	2,20	1200	•	•			•	Hladno-90
	60	8	66	1,20	1200	•	•			•	Hladno-90
	30	8	66	0,20	1200	•	•			•	Hladno-90
Daily Express / Xpress Super Short + Hitro+	30	2	40	0,15	1200	•	•			•	Hladno-90
Woolens / Hand Wash	40	1,5	55	0,50	1200						Hladno-40
Gentle Care	40	3,5	55	0,72	800						Hladno-40
Dark Care / Jeans	40	3,5	83	0,85	1200	•	•	•	•	•	Hladno-40
Outdoor / Sports	40	3,5	55	0,50	1200			•			Hladno-40
Stain Expert	60	4	80	1,70	1200		•	•			30-60
Hygiene +	90	8	125	2,90	1200	*					20-90
Down Wear	60	2	89	1,30	1000	•					Hladno-60
Shirts	60	3	63	1,23	800	•	•	•	•	•	Hladno-60
Čiščenje bobna+	90	-	73	2,60	600	*					90
Downloaded Program*****											
Mešano	40	3,5	83	0,90	800	•	•	•		•	Hladno-40
Zavese	40	2	86	0,70	800			•			Hladno-40
Spodnje perilo	30	1	70	0,30	600						Hladno-30
Mehke igrače	40	1	55	0,50	600						Hladno-40
Brisača	60	1	75	1,20	1000	•					Hladno-60

• : Izbirno.

* : Samodejno izbrano, ni mogoče preklicati.

** : Program označevanja energije (EN 60456 Ed.3)

*** : Če je najvišja hitrost centrifugiranja manjša od te vrednosti, lahko izbirate le med hitrostmi do največje hitrosti centrifugiranja.

***** : Te programe lahko upravljate prek aplikacije HomeWhiz.

- : Glejte opis programa za največjo dovoljeno obremenitev.

 ** »Bombaž Eco 40 °C in Bombaž Eco 60 °C sta standardna programa.« Ta programa sta znana kot »40 °C bombažni standardni program« in »60 °C bombažni standardni program« in označena s simboloma  na plošči.



Dodatne funkcije v preglednici se lahko razlikujejo glede na model stroja.

Poraba vode in energije se lahko razlikuje zaradi tlaka, trdote in temperature vode, temperature okolja, vrste in količine perila, izbranih dodatnih funkcij in hitrosti centrifugiranja ter nihanja napajanja.

Na zaslonu stroja se med izbiranjem programa izpiše čas pranja. Odvisno od količine perila, ki ste ga naložili v stroj, lahko pride do razlike 1-1,5 ure med prikazanim časom pranja na zaslonu in dejanskim časom trajanja pranja. Čas trajanja pranja se samodejno posodobi hitro po začetku pranja.

»Proizvajalec lahko spremeni izbiro dodatnih funkcij. Nove izbire se lahko dodajo ali odstranijo.«

»Hitrost centrifugiranja stroja se lahko razlikuje glede na program, vendar pa ta hitrost ne more prekoračiti največje hitrosti centrifugiranja stroja.«

Indikativne vrednosti za sintetične programe (SL)

	Obremenitev (kg)	Poraba vode (l)	Poraba energije (kWh)	Trajanje programa (min) *	Preostala vsebnost vlage (%) **	Preostala vsebnost vlage (%) **
					≤ 1000 vrt./min.	> 1000 vrt./min.
Sintetika 60	3	71	1,35	115/150	45	40
Sintetika 40	3	67	0,85	115/150	45	40

* Na zaslonu stroja se izpišejo vsi časi pranja za izbran program. Manjše razlike med časom, prikazanim na zaslonu, in resničnim časom pranja so normalen pojav.

** Vrednosti preostale vsebnosti vlage se lahko razlikujejo glede na izbrano hitrost centrifugiranja.

4.3.4 Izбира programa

- 1 Določite program, primeren za vrsto, količino in umazanost perila, kot je označeno v »Preglednici programov in porabe«.

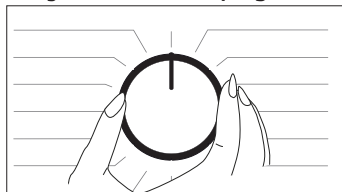


Za programe velja omejitev najvišje hitrosti centrifugiranja, ki ustreza vrsti tkanine.

Preden se odločite za program, premislite o vrsti tkanine, barvi, ravni umazanosti in dovoljeni temperaturi vode.

Vedno izberite najnižjo primerno temperaturo. Višja temperatura pomeni večjo porabo energije.

- 2 Z gumbom za **izbiro programa** izberite želeni program.



4.3.5 Programi

• Cottons Eco (Eco za bombaž)

Uporabite za pranje običajno umazanega, trpežnega bombažnega in lanenega perila. Čeprav traja dlje kot vsi drugi programi, omogoča velik prihranek energije in vode. Dejanska temperatura vode se lahko razlikuje od navedene. Če v stroj vstavite manj perila (npr. 1/2 zmogljivosti ali manj), se lahko čas programa samodejno skrajša. V tem primeru se bo poraba energije in vode še zmanjšala, kar pomeni še varčnejše pranje.

• Cottons (Bombaž)

Ta program uporabite za pranje obstojnega bombažnega perila (rjuhe, posteljnina, brisače, kopalni plašči, spodnje perilo itd.). Ko pritisnete gumb za funkcijo hitrega pranja, se čas trajanja programa občutno skrajša, učinkovitost pranja pa zagotovi intenzivno pranje. Če ne izberete funkcije hitrega pranja, se s tem znatno izboljša učinkovitost pranja in izpiranja močno umazanega perila.

• Synthetics (Sintetika)

Program nastavite za oblačila, kot so srajce, bluže, oblačila iz mešanice bombaža/sintetike itd. Čas trajanja programa se občutno skrajša, pralni stroj pa pere z visoko učinkovitostjo. Če ne izberete funkcije hitrega pranja, se s tem znatno izboljša učinkovitost pranja in izpiranja močno umazanega perila.

• Woollens / Hand Wash (Volna / ročno pranje)

Uporabite za pranje volnenih/občutljivih oblačil. Izberite temperaturo, ki ustreza etiketam na perilu. Perilo bo oprano z zelo manjšo intenzivnostjo, ki ga ne bo poškodovala.

• Hygiene+ (Proti alergijam)

Z uporabo pare na začetku programa boste enostavneje zmečhali umazanijo.

Program uporabite za perilo (oblačila za dojenčke, rjuhe, posteljnino, spodnje perilo, bombažno perilo itd.), ki potrebuje protialergijsko in higiensko, intenzivno in dolgotrajno pranje pri visokih temperaturah. Visoka stopnja higiene je zagotovljena zahvaljujoč uporabi pare pred zagonom programa, visokim temperaturam in dodatnemu izpiranju.

• Program je preizkusila in odobrila britanska fundacija za boj proti alergijam »The British Allergy Foundation«.

(Allergy UK) pri izbrani temperaturi 60 °C in ga potrdila v smislu njegove učinkovitosti pri odpravljanju alergenov ter bakterij in plesni.



Allergy UK je blagovna znamka britanske fundacije za boj proti alergijam (»The British Allergy Foundation«). Znak o odobritvi je bil zasnovan, da bi pomagal ljudem, ki potrebujejo priporočilo o tem, ali izdelek omejuje/zmanjšuje/odstranjuje alergene iz okolja bolnikov z alergijami oziroma občutno zmanjša njihovo vsebnost. Njegov namen je ljudem zagotoviti, da so bili izdelki znanstveno preizkušeni ali preizkušeni na način, ki daje merljive rezultate.

• Down Wear (Vrhnja oblačila)

Nastavite program za pranje plaščev, telovnikov, jaken itd., ki vsebujejo perje in so označeni z oznako »strojno pranje«. Zahvaljujoč posebnemu centrifugiranju voda zagotovo doseže zračne prostore med perjem.

• Spin+Drain (Centrifugiranje in črpanje vode)

Ta program uporabite za odstranjevanje vode z oblačil ali črpanje vode iz stroja.

• Rinse (Izpiranje)

Uporabite za ločeno izpiranje ali škrobljenje perila.

• Zavese

Program nastavite za pranje tila in zaves. Zaradi premočnega penjenja, ki ga povzroči pletena tkanina, za pranje zaves/tila dodajte v glavni predelek za pranje manjšo količino pralnega sredstva. Zahvaljujoč posebnemu centrifugiranju se til in zavesa manj mečkajo. Ne vstavite večje količine zaves, kot je navedeno, da jih ne poškodujete.



Za pranje zaves v tem programu priporočamo uporabo posebnih pralnih sredstev v predelku za pralni prašek.

• Shirts (Srajce)

Ta program nastavite za hkratno pranje srajc iz bombaža, sintetike ali tkanin, ki vsebujejo tudi sintetiko. Zmanjša mečkanje. Če pritisnete tipko za funkcijo hitrega pranja, je algoritem predhodne obdelave izpuščen.

• Dodajte sredstvo za predhodno obdelavo neposredno na oblačila ali pa jo dodajte skupaj s pralnim sredstvom, ko stroj začne črpati vodo v predelek za pralni prašek. Tako je učinkovitost v precej krajšem času enaka kot pri običajnem pranju. Življenjska doba uporabe vaših srajc se podaljša.

• Daily Express / Xpress Super Short (Dnevno ekspres / Super kratko ekspres)

Ta program je namenjen pranju manj umazanih bombažnih oblačil ali bombažnih oblačil brez madežev v krajšem času. Ko izberete funkcijo hitrega pranja, se lahko trajanje programa zmanjša za do 14 minut. Ko izberete funkcijo hitrega pranja, lahko perete največ 2 (dva) kg perila.

• Dark Care / Jeans (Temno perilo / kavbojke)

Ta program uporabite za zaščito barve vaših temnih oblačil ali kavbojk. Program izvede visokoučinkovito pranje s posebnim delovanjem bobna tudi pri nizki temperaturi. Za temno perilo se priporoča uporaba tekočega pralnega sredstva ali sredstva za volno. Ne uporabite za pranje občutljivih oblačil, ki vsebujejo volno itd.

• Mešano

Uporabite za hkratno pranje oblačil iz bombaža in sintetike.

• Gentle Care (Občutljivo)

Program nastavite za pranje občutljivih oblačil, kot so pletenine ali nogavice iz mešanice bombaža/sintetike. Program pere s ciklusom blage intenzivnosti. Oblačila, katerih barvo želite ohraniti, perite pri 20 stopinjah ali pa izberite možnost hladnega pranja.

• Spodnje perilo

Program nastavite za pranje občutljivih oblačil, ki so primerna za ročno pranje, in občutljivega ženskega spodnjega perila. Manjšo količino perila morate prati v pralni mrežici. Kaveljčki, gumbi itd. morajo biti zapeti, zadrge pa zaprte.

• Outdoor / Sports (Oblačila za zunaj / šport)

Ta program lahko nastavite za pranje športnih oblačil in oblačil za uporabo na prostem, ki vsebujejo mešanico bombaža/sintetike in imajo površinsko plast, ki zagotavlja odpornost proti vodi, kot je gore-tex itd. Zahvaljujoč posebnim rotacijskim premikom bobna zagotavlja nežno pranje.

• StainExpert (strokovnjak za madeže)

Stroj ima poseben program za madeže, ki omogoča najučinkovitejše odstranjevanje različnih vrst madežev. Program nastavite le za pranje trpežnega barvnega bombažnega perila. Programa ne uporabljajte za pranje občutljivega in pigmentiranega perila. Pred pranjem preverite etikete na perilu (priporočeno za bombažne srajce, hlače, kratke hlače, majice, oblačila za dojenčke, pižame, predpasnike, namizne prte, posteljnino, odeje, rjuhe, prevleke za vzglavnike, kopalne brisače, brisače, nogavice, bombažno perilo, ki je primerno za dolgotrajno pranje pri visoki temperaturi). Samodejni program za madeže lahko uporabite za pranje 24 vrst madežev, ki so razdeljeni v dve različni skupni glede na izbiro hitre funkcije. Spodaj lahko najdete skupine madežev glede na izbiro hitre funkcije. Spodaj lahko najdete skupine madežev glede na hitro funkcijo:

Ko izberete hitro funkcijo:		
Kri	Čaj	Rdeče vino
Čokolada	Kava	Kari
Puding	Sadni sok	Marmelada
Jajce	Kečap	Premog

Ko ne izberete hitre funkcije:		
Maslo	Znoj	Solatni preliv
Trava	Umazan ovrtnik	Ličila
Blato	Hrana	Strojno olje
Kokakola	Majoneza	Hrana za dojenčke

- Izberite program za madeže.
- Med zgornjimi skupinami poiščite madež, ki ga želite očistiti, in izberite ustrezno skupino s pomočjo gumba za hitro dodatno funkcijo.
- Preverite etiketo na perilu in se prepričajte, da ste izbrali ustrezno temperaturo in hitrost centrifugiranja.

• Downloaded Program (Prenesen program)

To je poseben program, ki vam omogoča prenos različnih programov. Na začetku boste v aplikaciji HomeWhiz videli nek privzeti program. Toda z aplikacijo HomeWhiz lahko izberete in uporabljate kateri koli program iz nabora vnaprej določenih programov, ga nato spremenite in uporabljate.



Če želite uporabljati funkciji HomeWhiz ali daljinsko upravljanje, morate izbrati funkcijo prenesen program. Za podrobnejše informacije glejte razdelek 4.3.15 Funkciji HomeWhiz in daljinsko upravljanje.

• Mehke igrače

Mehke igrače morate prati s programom za občutljivo perilo zaradi občutljivih tkanin, vlaken in dodatkov, ki jih vsebujejo. Program za pranje mehkih igračk zahvaljujoč manj intenzivnemu pranju in centrifugiranju med pranjem ščiti igrače. Priporočamo uporabo tekočega pralnega sredstva.



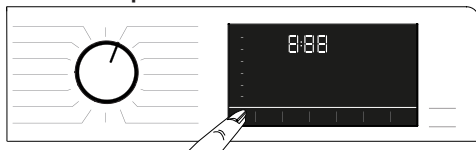
Pod nobenimi pogoji ne smete prati lomljivih igračk s trdimi površinami.

Igračk ne smete prati skupaj z oblačili, saj jih lahko poškodujejo.

• Brisača

Uporabite ta program za pranje obstojnega bombažnega perila, kot so brisače. Brisače v stroj položite tako, da se ne dotikajo tesnila ali stekla.

4.3.6 Izbira temperature



Potem ko nastavite nov program, se na zaslону označi temperatura, priporočena za program. Možno je, da priporočena temperatura ni največja temperatura, ki jo lahko izberete za trenutni program. Za spreminjanje temperature pritisnite **gumb za nastavev temperature**. Temperatura se z vsakim pritiskom na gumb zmanjša.



V programih, ki ne dovoljujejo temperaturnih nastavitvev, spremembe niso mogoče.

Temperaturo lahko spremenite tudi po začetku pranja. Če potek pranja dovoljuje, lahko opravite spremembo. Če potek pranja ne dovoljuje, ne morete opraviti spremembe.



Če preklopite na hladno pranje in ponovno pritisnete gumb za nastavev temperature, se na zaslону prikaže priporočljiva največja temperatura za izbran program. Za zmanjšanje temperature ponovno pritisnite gumb za nastavev temperature.

4.3.7 Izbira hitrosti centrifugiranja



Ko izberete nov program, se na indikatorju **hitrosti centrifugiranja** izpiše priporočena hitrost centrifugiranja za izbran program.



Možno je, da priporočena hitrost centrifugiranja ni največja hitrost, ki jo lahko izberete za trenutni program.

Za spreminjanje hitrosti centrifugiranja pritisnite gumb za **nastavitev hitrosti centrifugiranja**.

Nato se, odvisno od modela, na zaslonu izpišeta možnosti »Zadržanje izpiranja« in »Brez centrifugiranja«.

Če perila ne boste vzeli iz pralnega stroja takoj, ko se program zaključi, vključite funkcijo **Prekinitev izpiranja**, da se perilo ne bo zmečkalo, ko v stroju ne bo več vode.

Ta funkcija obdrži perilo v vodi za končno izpiranje.

Če želite centrifugirati perilo po funkciji zadržanja izpiranja:

- Nastavite **Hitrost centrifugiranja**.

- Pritisnite gumb za **zagon/premor/preklic**. Program se ponovno zažene. Stroj izpusti vodo in centrifugira perilo.

Če želite izčrpati vodo ob koncu programa brez centrifugiranja, uporabite funkcijo **Brez centrifugiranja**.



V programih, ki ne dovoljujejo nastavitve hitrosti centrifugiranja, spremembe niso mogoče.

Hitrost centrifugiranja lahko spremenite po zagonu pranja, če je potek pranja primeren. Če potek pranja ne dovoljuje, ne morete opraviti spremembe.

Zadrži izpiranje

Če perila ne boste vzeli iz pralnega stroja takoj, ko se program zaključi, vključite funkcijo za zadržanje izpiranja, da perilo ostane v vodi za zadnje izpiranje, kar bo preprečilo mečkanje perila, ko v stroju ne bo več vode. Nato pritisnite gumb za zagon/premor, če želite izčrpati vodo brez centrifugiranja.

Program se ponovno zažene in zaključi, ko se voda izčrpa iz stroja.

Če želite zagnati centrifugo za perilo, ki stoji v vodi, nastavite hitrost centrifugiranja in pritisnite gumb za zagon/premor.

Program se ponovno zažene. Sistem spusti vodo, ožame perilo in zaključi program.

4.3.8 Izbira dodatne funkcije



Dodatne funkcije nastavite, preden zaženete program. Ko izberete program, se osvetlijo izbrane ikone simbolov dodatnih funkcij.



Ko boste pritisnili gumb za dodatno funkcijo, ki je ni možno izbrati skupaj s trenutnim programom, boste slišali opozorilni zvok.

Okvirji dodatnih funkcij, ki so izbrani za trenutni program, po začetku pranja ostanejo osvetljeni.



Nekaterih funkcij ni možno nastaviti hkrati. Če pred zagonom stroja izberete drugo dodatno funkcijo, ki ni združljiva s prvo dodatno funkcijo, sistem preklopi prvo izbrano funkcijo in vključi drugo izbrano dodatno funkcijo. Na primer, če želite izbrati način hitrega pranja, potem ko ste nastavili program dodatno izpiranje, se bo dodatno izpiranje preklicalo in vključil se bo način hitrega pranja.

Dodatne funkcije, ki ni združljiva s programom, ni mogoče izbrati. (Glejte »Preglednica programov in porabe«.)

Nekateri programi imajo dodatne funkcije, ki morajo biti uporabljene hkrati. Teh funkcij ni mogoče preklicati. Okvir dodatne funkcije ne bo osvetljen, ampak bo osvetljena samo notranjost.

4.3.8.1 Dodatne funkcije

• Predpranje

Predpranje je smotno nastaviti samo za zelo umazano perilo. Brez predpranja boste prihranili energijo, vodo, pralno sredstvo in čas.

• Hitro+

Po tem, ko izberete program, lahko pritisnete nastavitvev za hitro pranje in skrajšate trajanje programa. Pri nekaterih programih je trajanje lahko krajše za več kot 50 %. Kljub temu pa so rezultati pranja dobri zaradi spremenjenega algoritma.

Čeprav je ta funkcija odvisna od programa, se trajanje programa ob prvem pritisku na hitro pranje skrajša na določeno raven, ob drugem pritisku na isto tipko pa pade na minimalno trajanje.

Za boljše rezultate pranja nastavitvev za hitro pranje ne uporabljajte, ko perete zelo umazano perilo. S pritiskom na tipko za hitro pranje skrajšajte trajanje programa pri zmerno in malo umazanem perilu.

• Para

S tem programom lahko zmanjšate zmečkanost in čas likanja majhne količine bombaža, sintetične ali mešanega perila brez madežev.

• Daljinsko upravljanje

Uporabite ta gumb za dodatno funkcijo za povezavo z vašo pametno napravo. Za podrobnejše informacije glejte razdelek 4.3.15 Funkciji HomeWhiz in daljinsko upravljanje.

• Program po meri

To dodatno funkcijo lahko uporabite skupaj z aplikacijo HomeWhiz le za programe za pranje bombažnega in sintetičnega perila. Ko boste vklopili to dodatno funkcijo, boste lahko programu dodali do 4 dodatne korake izpiranja. Uporabljate lahko tudi nekatere dodatne funkcije, ki niso označene na vašem izdelku. Čas programov za pranje bombažnega in sintetičnega perila lahko znotraj varnega razpona celo podaljšate ali skrajšate.



Ko boste izbrali dodatno funkcijo programa po meri, se učinkovitost pranja in poraba energije ne bosta ujemali z navedeno vrednostjo.

4.3.8.2 Funkcije/programme izberete s 3-sekundnim pritiskom tipk za funkcije

• Čiščenje bobna+ 3"

Za izbiro programa pritisnite in 3 sekunde držite gumb za dodatno funkcijo 1. Uporabite redno (enkrat v 1 do 2 mesecih) za čiščenje bobna in zagotavljanje potrebne higijene. Pred izvedbo programa je uporabljena para, da so zmeščani ostanki v bobnu. Zaženite program, ko je stroj popolnoma prazen. Za boljše rezultate dodajte prašek za odstranjevanje vodnega kamna v predelek za pralno sredstvo št. »2«. Ob koncu programa pustite vratca priprta, da se notranjost stroja posuši.



To ni program pranja. To je program vzdrževanja.

Programa ne vklopite, če stroj ni prazen. Če program kljub temu vklopite, bo stroj zaznal perilo v notranjosti in program prekinil.

• Proti mečkanju+ 3"

To funkcijo izberete, če pritisnete gumb za izbiro centrifugiranja in ga držite pritisnjene tri sekunde. Kontrolni svetlobni indikator programa zadevnega koraka bo zasvetil. Ko je funkcija izbrana, se boben obrača do 8 ur, da oblačila ob koncu programa niso zmečkana. Med 8-urnim trajanjem lahko kadar koli prekličete program in vzamete perilo iz stroja. Za preklic funkcije pritisnite tipko za izbiro funkcije ali pa tipko za vklop/izklop stroja. Kontrolni svetlobni indikator programa sveti, dokler funkcije ne prekličete ali pa se korak ne zaključi. Če funkcije ne prekličete, bo aktivna tudi pri naslednjih ciklih pranja.

• Odstranjevanje dlak 3"

To funkcijo izberete, če pritisnete gumb za dodatno funkcijo 2 in ga držite pritisnjene tri sekunde. Funkcija učinkovitega odstranjevanja dlak domačih živali, ki so ostale na vaših oblačilih. Ko izberete to funkcijo, se običajnemu programu dodata koraka predpranja in dodatnega izpiranja. Perilo se pere z večjo količino vode, odstranjevanje dlak domačih živali pa je učinkovitejše.

• Otroška ključavnica 3"

S funkcijo otroške ključavnice preprečite poseganje otrok v stroj. Z njo prav tako preprečite spreminjanje izbranega programa.



Ko je vklopljena otroška ključavnica, lahko napravo vklopite ali izklopite z gumbom za vklop/izklop. Ko stroj ponovno vklopite, bo program nadaljeval od tam, kjer se je ustavil.

Če pritisnete kateri koli gumb, ko je vključena otroška ključavnica, bo stroj oddal zvočno opozorilo. Zvočno opozorilo bo ugasnilo, če petkrat zaporedoma pritisnete gumba.

Za vklop otroške ključavnice:

Pritisnite in držite gumb dodatne funkcije 3 za 3 sekunde. Ko se odštevanje »CL 3-2-1« na zaslonu zaključi, se na zaslonu pojavi simbol »Otroška ključavnica vklopljena«. Ob prikazu tega opozorila lahko sprostite gumb za **dodatno funkcijo 3**.

Za izklop otroške ključavnice:

Pritisnite in držite gumb dodatne funkcije 3 za 3 sekunde. Ko se odštevanje »CL 3-2-1« na zaslonu zaključi, simbol »Otroška ključavnica izklopljena« ugasne.

• Bluetooth 3" 3"

S funkcijo Bluetooth povezave lahko svoj stroj povežete s svojo pametno napravo. Tako lahko prek svoje pametne naprave pridobite informacije o svojem stroju in ga upravljate.

Za vklop Bluetooth povezave:

Pritisnite in zadržite gumb za daljinsko upravljanje za 3 sekunde. Ko se odštevanje »3-2-1« na zaslonu zaključi, se na zaslonu pojavi ikona »Vključeno«. Izpustite **gumb za daljinsko upravljanje**. Ko se bo vaš izdelek povezoval z vašo pametno napravo, bo ikona Bluetooth utripala. Če se bo povezava uspešno vzpostavila, bo ikona še naprej svetila.

Za izklop Bluetooth povezave:

Pritisnite in zadržite gumb za daljinsko upravljanje za 3 sekunde. Ko se odštevanje »3-2-1« na zaslonu zaključí, se na zaslonu pojavi ikona »Izklop«.



Preden lahko vzpostavite Bluetooth povezavo, morate nastaviti aplikacijo HomeWhiz. Po nastavitvi aplikacije se bo Bluetooth povezava samodejno vzpostavila, ko boste pritisnili gumb za daljinsko upravljanje, dokler je gumb na položaju Prenos programa/Daljinsko upravljanje.

4.3.9 Končni čas

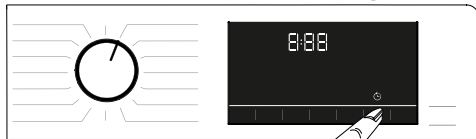
Časovni prikaz

Preostali čas do konca programa je med delovanjem prikazan v obliki »01:30« v urah in minutah.



Čas programa se lahko zaradi tlaka vode, trdote in temperature vode, temperature okolja, količine in vrste perila, izbranih dodatnih funkcij ter nihanja napajanja razlikuje od vrednosti v »Preglednici programov in porabe«.

S funkcijo **Končni čas** lahko zamaknete začetek programa za do 24 ur. Ko pritisnete gumb za **končni čas**, se prikaže izračunani čas konca programa. Če **končni čas** nastavite, sveti indikator za **končni čas**.



Če želite aktivirati funkcijo končnega časa in zaključek programa ob določenem času, morate po nastavitvi časa pritisniti gumb za **zagon/premor**.



Če želite preklicati funkcijo končnega časa, zavrtite gumb na položaj **vklop in izklop**.



Ko aktivirate funkcijo končnega časa, v predelek za pralni prašek št. 2 ne dodajate tekočega pralnega sredstva. Obstaja nevarnost obarvanja perila.

- 1 Odprite vratca za nalaganje, vstavite perilo v stroj in nalijte pralno sredstvo itd.
- 2 Izberite program pranja, temperaturo, hitrost centrifugiranja in po potrebi pomožne funkcije.
- 3 Nastavite končni čas izbranega programa, tako da pritisnete gumb za **končni čas**. Indikator za **končni čas** zasveti.
- 4 Pritisnite gumb za **zagon/premor**. Začne se odštevanje časa. Simbol »:« v sredini končnega časa prične utripati na zaslonu.



Med odštevanjem končnega časa lahko v stroj naložite dodatno perilo. Ob koncu odštevanja indikator končnega časa ugasne, pranje se prične, na zaslonu pa se prikaže čas izbranega programa.

Ko končni čas poteče, se pojavi čas na zaslonu, ki je sestavljen iz končnega časa in trajanja izbranega programa.

4.3.10 Zagon programa

- 1 Za zagon programa pritisnite na gumb za **zagon/premor**.
- 2 Svetlobni indikator gumba za **zagon/premor**, ki je bil izklopljen, je zdaj osvetljen in prikazuje, da se je program začel.



3 Vratca za nalaganje so zaklenjena. Ko so vratca za nalaganje zaklenjena, se na zaslonu prikaže simbol za zaklep vratc.



4 Na zaslonu zasveti svetlobni indikator nadaljevanja programa, ki označi trenutni korak.

4.3.11 Blokada vrat

Na vratcih za vstavljanje perila je sistem za zaklepanje, ki onemogoči odpiranje vratc, če raven vode ni ustrezna.

Ko so vratca za nalaganje zaklenjena, se na zaslonu prikaže »Vratca so zaklenjena«.



Če ste izbrali funkcijo daljinskega upravljanja, bodo vrata zaklenjena. Če želite odpreti vrata, morate izklopiti funkcijo daljinskega zagona tako, da pritisnete gumb daljinskega zagona ali da spremenite položaj programa.

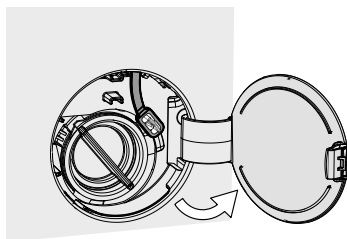
Odpiranje vratc za nalaganje v primeru izpada elektrike:



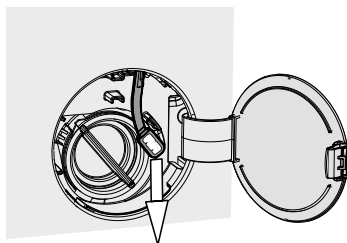
V primeru izpada elektrike lahko vratca za nalaganje odprete ročno, tako da uporabite ročaj za odpiranje vratc za nalaganje v sili, ki se nahaja pod pokrovom filtra črpalke.



OPOZORILO: Da bi se izognili iztekanju vode, se preden odprete vratca za nalaganje prepričajte, da v stroju ni vode.



- Očistite pokrov filtra črpalke.



- Sprostite ročaj za odpiranje vratc za nalaganje v sili na zadnji strani pokrova filtra.
- Enkrat povlecite ročaj za odpiranje vratc za nalaganje v sili in odprite vratca. Ko odprete vratca za nalaganje, ponovno vstavite ročaj za odpiranje vratc v sili.
- Če se vratca za nalaganje ne odprejo, ponovno povlecite za ročaj.

4.3.12 Sprememba izbire po zagonu programa

Dodajanje perila po zagonu programa

Če je nivo vode v stroju ustrezen, ko pritisnete gumb za zagon/premor, se blokada vratc izklopi in vratca se odprejo ter vam omogočijo, da v stroj naložite perilo. Ko se blokada vratc za nalaganje izklopi, ikona blokade vratc na zaslonu ugasne. Ko dodate oblačila, zaprite vratca in enkrat pritisnite gumb za **zagon/premor**, da se cikel pranja nadaljuje.



Če nivo vode v stroju ni ustrezen, ko pritisnete gumb za zagon/premor, blokade vratc ni mogoče izklopiti in ikona za blokado vratc na zaslonu še naprej sveti.



Če je temperatura vode v stroju nad 50 °C, blokade vratc ni mogoče izklopiti zaradi varnostnih razlogov, tudi če je nivo vode ustrezen.

Preklop stroja v način za premor:

Pritisnite gumb za zagon/premor, če želite preklopiti v način za premor. Na zaslonu utripa simbol za premor.



Sprememba izbire programa po zagonu programa:

Sprememba programa je dovoljena med delovanjem trenutnega programa le, če ni omogočena otroška zaščita. To dejanje bo prekinilo trenutni program.



Izbran program se začne znova.

Spreminjanje dodatne funkcije, hitrosti in temperature

Odvšno od faze programa v teku lahko prekličete ali izberete dodatne funkcije. Glejte »Izbira dodatne funkcije«.

Prav tako lahko spremenite nastavitve hitrosti in temperature. Glejte »Hitrost centrifugiranja« in »Izbira temperature«.



Če je temperatura vode v stroju visoka ali je raven vode nad vratci, se vratca za nalaganje ne odprejo.

4.3.13 Preklic programa

Program lahko prekličete tako, da gumb za izbiro programa zavrtite na drug program ali da stroj izklopite in nato vklopite z gumbom za izbiro programa.



Če zavrtite gumb za izbiro programa, ko je otroška ključavnica omogočena, program ne bo preklican. Najprej morate preklicati otroško ključavnico.

Če želite po tem, ko ste preklicali program, odpreti vratca za nalaganje, vendar to ni mogoče, ker je nivo vode nad vratci, potem zavrtite gumb za izbiro programa na program Črpaj + centrifugiraj in izpraznite vodo v stroju.

4.3.14 Konec programa

Ko je program zaključen, se na zaslonu prikaže simbol End (»konec«).

Če v 10 minutah ne pritisnete nobenega gumba, se bo stroj preklopil v način IZKLOPA. Zaslon in vsi indikatorji ugasnejo.

Ko pritisnete gumb vklop/izklop, se bodo prikazali zaključeni koraki programa.

4.3.15 Funkciji HomeWhiz in daljinsko upravljanje

Z aplikacijo HomeWhiz lahko prek svoje pametne naprave preverjate svoj pralni stroj in pridobite informacije o njegovem stanju. Z aplikacijo HomeWhiz lahko prek svoje pametne naprave izvajate različne postopke, ki jih je možno izvajati na samem stroju. Nekatere funkcije pa lahko izvajate le prek aplikacije HomeWhiz.

Če želite uporabiti funkcijo Bluetooth vašega stroja, morate s spletne trgovine svoje pametne naprave prenesti aplikacijo HomeWhiz.

Poskrbite, da ima vaša pametna naprava pred namestitvijo aplikacije internetno povezavo.

Če boste aplikacijo uporabljali prvič, sledite navodilom za registracijo uporabniškega računa na zaslonu. Po postopku registracije boste lahko uporabljali vse izdelke, ki podpirajo funkcijo HomeWhiz, v svojem domu prek tega računa.

Za ogled izdelkov, ki so povezani z vašim računom, pritisnite »Dodaj/odstrani napravo« v aplikaciji HomeWhiz. Na tej strani lahko izvedete postopke povezovanja svojih izdelkov.

Po namestitvi boste lahko prek aplikacije HomeWhiz na svojo pametno napravo prejeli potisna obvestila svojega pralnega stroja.



Če želite uporabljati funkcijo HomeWhiz, morate aplikacijo namestiti in svoj pralni stroj povezati s svojo pametno napravo prek povezave Bluetooth. Če vaš pralni stroj ni povezan z vašo pametno napravo, bo deloval kot naprava brez funkcije HomeWhiz.

Vaš izdelek bo deloval kot bi bil povezan z vašo pametno napravo prek povezave Bluetooth. S to povezavo bo omogočeno upravljanje prek aplikacije, zato morate zagotoviti zadostno moč signala povezave Bluetooth med svojo napravo in pametno napravo.

Na spletnem mestu www.homewhiz.com boste našli različici za sistema Android in iOS, ki ju podpira aplikacija HomeWhiz.



OPOZORILO: Varnostni ukrepi, opisani v razdelku »**SPLOŠNA VARNOSTNA NAVODILA**«, prav tako veljajo za daljinsko upravljanje prek funkcije HomeWhiz.

4.3.15.1 Nastavitev aplikacije HomeWhiz

Če želite uporabljati aplikacijo, morate vzpostaviti povezavo med vašo napravo in aplikacijo HomeWhiz. Za vzpostavitev povezave morate slediti spodnjim navodilom za nastavitev naprave in aplikacije HomeWhiz.

- Če prvič dodajate neko napravo, tapnite gumb »Dodaj/odstrani napravo« v aplikaciji HomeWhiz. Nato tapnite »Tapnite tukaj za nastavitev nove naprave«. Za nastavitev sledite spodnjim korakom ter korakom v aplikaciji HomeWhiz.
- Pred nastavitvijo poskrbite, da je vaš stroj izklopljen. Za vklop nastavitvenega načina HomeWhiz na svojem stroju pritisnite in tri sekunde hkrati držite gumba za temperaturo in daljinsko upravljanje.



- Ko je naprava v nastavitvenem načinu HomeWhiz, bo na zaslonu prikazana animacija, ikona Bluetooth pa bo utripala, dokler se ne bo vaš stroj povezal z vašo pametno napravo. V tem načinu bo dejaven le gumb za programe. Drugi gumbi bodo nedejavni.



- Izberite pralni stroj na zaslonu v aplikaciji in pritisnite »nadaljuj«.
- Še naprej sledite navodilom na zaslonu, dokler vas aplikacija HomeWhiz ne povpraša po izdelku, ki ga želite povezati s svojo pametno napravo.
- Ko se bo vaš pralni stroj uspešno povezal z vašo napravo, se bo zaslon na pralnem stroju samodejno vklopil v normalnem načinu, ikona Bluetooth bo še naprej svetila, vaša naprava pa bo predvajala melodijo za uspešno nastavitvev.
- Vrnite se v aplikacijo HomeWhiz in počakajte na zaključek nastavitve. Po zaključku nastavitve določite svojemu pralnemu stroju ime. Zdaj lahko tapnete in vidite izdelek, ki ste ga dodali v aplikaciji HomeWhiz.



Če nastavitve ne boste uspešno izvedli v 5 minutah, se bo vaš pralni stroj samodejno izklopil. V tem primeru boste morali postopek nastavitve izvesti od začetka. Če težava ni odpravljena, stopite v stik s pooblaščenim serviserjem.

Svoj pralni stroj lahko uporabljate z več pametnimi napravami. Prenesite aplikacijo HomeWhiz na druge pametne naprave, s katerimi želite upravljati svoj pralni stroj. Ko boste zagnali aplikacijo, se morate prijaviti z računom, ki ste ga predhodno ustvarili in s katerim ste povezali svoj pralni stroj. Ali pa preberite razdelek »Nastavitve pralnega stroja, ki je povezan z računom druge osebe«.



OPOZORILO: Če želite zaključiti nastavitve aplikacije HomeWhiz, mora imeti vaša pametna naprava internetno povezavo. Sicer vam aplikacija HomeWhiz ne bo dovolila uspešno zaključiti postopka nastavitve. Če imate težave s svojo internetno povezavo, stopite v stik s svojim ponudnikom internetnih storitev.



Aplikacija HomeWhiz bo morda zahtevala številko izdelka na etiketi izdelka. Etiketna izdelka se nahaja na notranji strani vrat naprave. Številka izdelka je napisana na etiketi naprave.



4.3.15.2 Nastavitve pralnega stroja, ki je povezan z računom druge osebe

Če se je pralni stroj, ki ga želite uporabljati, dodal v sistem prek računa druge osebe, morate vzpostaviti novo povezavo med svojo aplikacijo HomeWhiz in svojo napravo.

- Prenesite aplikacijo HomeWhiz na novo pametno napravo, ki jo želite uporabiti.
- Ustvarite nov račun in se vpišite vanj v aplikaciji HomeWhiz.
- Sledite navodilom v razdelku »nastavitve aplikacije HomeWhiz« (4.3.15.1 Nastavitve aplikacije HomeWhiz) in zaključite postopek nastavitve.



Funkciji HomeWhiz in daljinsko upravljanje na vaši napravi lahko upravljate prek povezave Bluetooth, zato lahko uporabljate le eno aplikacijo HomeWhiz hkrati.



OPOZORILO: Število povezanih pametnih naprav z vašo napravo je omejeno. Če boste prekoračili to omejitev, bo prva povezana naprava izbrisana s seznama povezanih naprav na vaši pametni napravi, zato boste morali na njej ponoviti postopek nastavitve.

4.3.15.3 Funkcija daljinskega upravljanja in njena uporaba

Funkcija Bluetooth se bo samodejno vklopila po zaključeni nastavitvi aplikacije HomeWhiz. Za vklop ali izklop povezave Bluetooth glejte razdelek 4.3.8.2 Bluetooth 3“.

Če boste pralni stroj izklopili in spet vklopili, medtem ko je vzpostavljena povezava Bluetooth, se bosta napravi samodejno ponovno povezali. Ko pa se boste z napravo oddaljili izven dosega, se bo funkcija Bluetooth samodejno izklopila. V tem primeru boste morali funkcijo Bluetooth ponovno vklopiti, če boste želeli uporabiti funkcijo daljinskega upravljanja.

Stanje povezave lahko spremljate tako, da preverite simbol Bluetooth na zaslonu. Če simbol neprekinjeno sveti, je povezava Bluetooth vzpostavljena. Če simbol utripa, se vaš izdelek poskuša povezati z vašo napravo. Če simbola ni, povezava ni vzpostavljena.



OPOZORILO: Funkcijo daljinskega vodenja je možno izbrati le, ko je na vaši napravi vzpostavljena povezava Bluetooth.

Če ne morete izbrati funkcije daljinskega upravljanja, preverite stanje povezave. Če povezave ne morete vzpostaviti, ponovite začetno nastavitve svoje naprave.

OPOZORILO: Zaradi varnostnih razlogov bodo vrata izdelka ostala zaklenjena, kadar je funkcija daljinskega upravljanja omogočena neodvisno od načina delovanja. Če želite odpreti vrata izdelka, morate pritisniti gumb za izbor programa ali pritisniti tipko za daljinsko upravljanje, da boste deaktivirali funkcijo daljinskega upravljanja.

Ko boste želeli daljinsko upravljati svoj pralni stroj, boste morali vklopiti funkcijo daljinskega upravljanja s pritiskom gumba za daljinsko upravljanje, ko je gumb za programe v položaju Prenos programa/Daljinsko upravljanje na nadzorni plošči vašega pralnega stroja. Ko boste dostopali do svojega izdelka, boste videli zaslon, ki je podoben spodnjemu.



Ko je vklopljena funkcija daljinskega upravljanja, lahko upravljate, izklopite in spremljate stanje delovanja le prek svojega pralnega stroja. Vse funkcije, razen otroške ključavnice, lahko upravljate prek aplikacije.

Indikator na gumbu za daljinsko upravljanje prikazuje, ali je funkcija vklopljena ali izklopljena.

Če je funkcija daljinskega upravljanja izklopljena, se delovanje upravlja na samem pralnem stroju, na aplikaciji pa je dovoljeno le spremljanje stanja.

Če funkcije daljinskega zagona ne boste mogli vklopiti, boste ob pritisku gumba zaslišali opozorilni zvok. To se lahko zgodi, ko je naprava vklopljena in ni povezana z nobeno pametno napravo prek povezave Bluetooth. Na primer, ko je funkcija Bluetooth izklopljena ali ko so odprta vrata pralnega stroja.

Ko boste vklopili to funkcijo na pralnem stroju, bo razen v določenih pogojih ostala omogočena in bo zagotavljala upravljanje pralnega stroja daljinsko prek povezave Bluetooth.

Funkcija se izklopi iz varnostnih razlogov, ko:

- pralni stroj utrpi izpad elektrike;
- obrnete gumb za programe, izberete drug program ali izklopite napravo.

4.3.15.4 Odpravljanje težav

Če med upravljanjem ali vzpostavljeno povezavo pride do težav, storite sledeče. Spremljajte, ali se med uporabo težava ponavlja. Če težava ni odpravljena, storite sledeče.

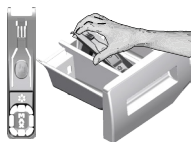
- Preverite, ali je vaša pametna naprava povezana z ustreznim domačim omrežjem.
- Ponovno zaženite aplikacijo izdelka.
- Izklopite in nato vklopite funkcijo Bluetooth na nadzorni plošči.
- Če povezave ne morete vzpostaviti po zgornjih navodilih, ponovite začetno nastavitve svojega pralnega stroja.

Če težava ni odpravljena, stopite v stik s pooblaščenim serviserjem.

4.4 Vzdrževanje in čiščenje

Tehnična življenjska doba stroja se podaljša in število pogostih težav se zmanjša, če stroj redno čistite.

4.4.1 Čiščenje predala za pralno sredstvo



Predal za pralno sredstvo redno čistite (na vsakih 4-5 pranj), kot je opisano v nadaljevanju, in tako preprečite kopičenje ostankov praška.

Da bi ga odstranili dvignite zadnji del sifona, kot prikazuje slika.

Če se v predelku za mehčalec nabira prekomerna količina mešanice vode in mehčalca, očistite sifon.

- 1 Pritisnite gumb s pikicami na sifonu v predelku za mehčalec in predelek izvlecite iz stroja.
- 2 Predal za pralno sredstvo in sifon operite v umivalniku z obilico mlačne vode. Med čiščenjem nosite zaščitne rokavice ali uporabite primerno krtačo, tako da se s kožo ne dotikate ostankov.
- 3 Potem ko predal očistite, ga namestite pravilno nazaj na mesto.

4.4.2 Čiščenje vrat za nalaganje in bobna

Za izdelke, ki so opremljeni s programom za čiščenje bobna glejte Upravljanje z izdelkom - programi.



Postopek za čiščenje bobna ponovite vsaka 2 meseca.

Uporabljajte sredstvo za zaščito pred nastajanjem vodnega kamna, primerno za pralne stroje.



Po vsakem pranju se prepričajte, da v bobnu ne ostanejo kakšne tuje snovi. Če so odprtine, ki so prikazane na spodnji sliki, zamašene, jih z zobortebcem odmašite.

Tuje kovinske snovi bodo povzročile madeže rje na bobnu. Madeže na bobnu očistite s sredstvi za čiščenje nerjavečega jekla.

Pri tem nikoli ne uporabljajte jeklene ali žične volne. S tem boste namreč poškodovali barvane, kromirane in plastične površine.

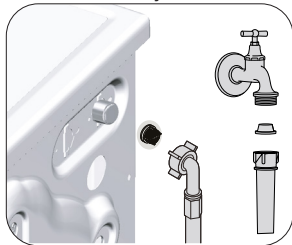
4.4.3 Čiščenje trupa in nadzorne plošče

Trup stroja po potrebi obrišite z vodo z milom ali blagimi čistilnimi sredstvi, ki ne povzročajo korozije, in ga posušite z mehko krpo.

Nadzorno ploščo očistite samo z mehko in vlažno krpo.

4.4.4 Čiščenje dovodnih filtrov

Na zadnji strani stroja je na koncu vsakega dovodnega ventila ter na koncu vsake dovodne cevi, ki je priključena na pipo, filter. Ti filtri preprečujejo prodor tujkov in umazanje iz vode v pralni stroj. Umazane filtre je treba očistiti.



- 1 Zaprite pipe.
- 2 Snemite matice dovodnih cevi, tako da odprete dostop do filtrov na dovodnih ventilih. Matice očistite z ustrezno krtačko. Če so filtri zelo umazani, jih s kleščami vzemite ven in očistite.
- 3 Odstranite filtre na ploski strani dovodnih cevi skupaj s tesnili ter jih očistite pod tekočo vodo.
- 4 Previdno ponovno namestite tesnila in filtre ter ročno privijte matice.

4.4.5 Odjem morebitne preostale vode in čiščenje filtra črpalke

Filtrirni sitem v stroju zaščiti pogon črpalke pred trdimi predmeti, kot so gumbi, kovanci in delci tkanin, med odjemom vode. Tako je odjem vode neoviran in tehnična življenjska doba stroja se podaljša. Če se voda ne odvaja iz stroja, to pomeni, da je zamašen filter črpalke. Filter je treba očistiti vsake 3 mesece ali vsakokrat, ko se zamaši. Pred čiščenjem filtra črpalke je treba iztočiti vodo iz stroja. Vodo je treba iztočiti tudi pred prevozom in prenašanjem stroja (npr. selitev v drugo hišo) in v primeru, da voda zmrzne.



POZOR: Tujki, ki ostanejo v filtru črpalke, lahko poškodujejo stroj ali ustvarjajo hrup.

POZOR: Če stroja ne uporabljate, izklopite pipo, odstranite cev za dovod vode in izpraznite vodo, ki se nahaja v stroju, da preprečite nevarnost zmrzovanja.

POZOR: Po vsaki uporabi izklopite pipo, na katero je povezana cev za dovod vode.

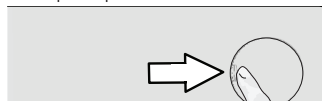
Če želite očistiti umazan filter in iztočiti vodo, upoštevajte naslednja navodila:

1. Izvlecite vtič in tako izključite napajanje.



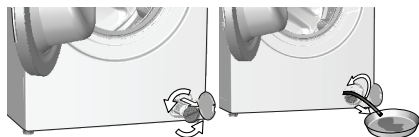
POZOR: Temperatura vode v stroju se lahko dvigne na 90 °C. Za zaščito pred opeklinami filter očistite, ko se voda v stroju ohladi.

2. Odprite pokrov filtra.



3. Za praznjenje vode upoštevajte spodnja navodila.

Če je stroj opremljen z odjemno cevjo za ukrepanje v sili za praznjenje vode:



- Snemite in izvlecite odjemno cev za ukrepanje v sili z držala.
- Na koncu cevi postavite veliko posodo. Iztočite vodo v posodo tako, da iztaknete čep na koncu cevi. Ko se posoda na polni, namestite čep in zaprite dovodno odprtino cevi. Potem ko izpraznite posodo, ponovno iztaknite čep in spustite vodo iz stroja.
- Ko končate, s čepom zaprite odprtino in pritrdite cev na mesto.
- Obrnite in odstranite filter črpalke.

4. Očistite ostanke v filtru in umazanijo okoli pogona črpalke.

5. Zamenjajte filter.


6. Če je filtrski pokrov sestavljen iz dveh kosov, pokrov zaprite tako, da pritisnete na jeziček. Če je pokrov iz enega kosa, najprej namestite jezička na mesto spodaj in nato pritisnite na zgornji del, tako da se pokrov zapre.

5 Odpravljanje težav

Težava	Vzrok	Rešitev
Programi se ne začnejo po tem, ko zaprete vratca.	Niste pritisnili gumba za začetek/premor/preklic. V primeru prevelike količine perila se lahko vratca za nalaganje težko zaprejo.	<ul style="list-style-type: none"> Pritisnite gumb za zagon/premor/preklic. Zmanjšajte količino perila in preverite, ali so vratca za nalaganje pravilno zaprta.
Programa ni možno zagnati ali izbrati.	Stroj se je zaradi težave med dovajanjem (napetost, vodni tlak itd.) morda prekopil v način samodejne zaščite.	<ul style="list-style-type: none"> Program preključite tako, da zavrtite izbirni gumb na drug program. Sistem preključe predhodni program (Glejte »Preklic programa«).
V notranjosti stroja je voda.	Po opravljenih procesih za nadzor kakovosti med proizvodnjo je morda v stroju ostala manjša količina vode.	<ul style="list-style-type: none"> Ne gre za napako; voda ne škoduje stroju.
Stroj ne sprejema vode.	Pipa je zaprta.	<ul style="list-style-type: none"> Odprite pipe.
	Dovodna cev je upognjena.	<ul style="list-style-type: none"> Izravnajte cev.
	Dovodna cev je zamašena.	<ul style="list-style-type: none"> Očistite filter.
	Vratca za nalaganje niso zaprta.	<ul style="list-style-type: none"> Zaprite vratca.
Voda v stroju se ne izprazni.	Odtočna cev je zamašena ali zavita.	<ul style="list-style-type: none"> Očistite ali izravnajte cev.
	Filter črpalke je zamašen.	<ul style="list-style-type: none"> Očistite filter črpalke.
Stroj vibrira oziroma obratuje hrupno.	Stroj ni postavljen uravnoteženo.	<ul style="list-style-type: none"> Uravnotežite stroj tako, da nastavite nogice.
	V filtru črpalke je trda snov.	<ul style="list-style-type: none"> Očistite filter črpalke.
	Varnostni vijaki za zaščito med prevozom in prenašanjem so še na mestu.	<ul style="list-style-type: none"> Odstranite varnostne vijake.
	V stroju je morda premajhna količina perila.	<ul style="list-style-type: none"> Naložite več perila v stroj.
	V stroju je naloženega preveč perila.	<ul style="list-style-type: none"> Vzemite ven nekaj perila ali z roko porazdelite obremenitev, tako da ga enakomerno uravnotežite v stroju.
	Stroj je morda naslonjen ob trd element.	<ul style="list-style-type: none"> Preverite in potrdite, da se stroj na nič ne naslanja.
Z dna stroja uhaja voda.	Odtočna cev je zamašena ali zavita.	<ul style="list-style-type: none"> Očistite ali izravnajte cev.
	Filter črpalke je zamašen.	<ul style="list-style-type: none"> Očistite filter črpalke.
Stroj se kmalu po zagonu programa zaustavi.	Stroj se je morda začasno zaustavil zaradi nizke napetosti.	<ul style="list-style-type: none"> Stroj se ponovno zažene, ko napetost vzpostavi normalno raven.
Stroj neposredno prazni vodo, ki priteče vanj.	Odtočna cev ni na ustrezni višini.	<ul style="list-style-type: none"> Priključite odtočno cev, kot je opisano v uporabniškem priročniku.
Med pranjem v stroju ni vode.	Voda je v nevidnem delu stroja.	<ul style="list-style-type: none"> To ni napaka.
Vratc za nalaganje ni mogoče odpreti.	Zaklep vrat je aktiviran zaradi ravni vode v stroju.	<ul style="list-style-type: none"> Vodo izpraznite, tako da zaženete program za črpanje ali centrifugiranje.
	Stroj segreva vodo ali pa je v ciklu centrifugiranja.	<ul style="list-style-type: none"> Počakajte, da se program zaključi.
	Vratca za nalaganje se lahko zaradi pritiska, ki so mu izpostavljena, zataknejo.	<ul style="list-style-type: none"> Primate ročaj in potisnite ter povlecite ročaj za nalaganje, da se sprostijo, nato pa jih odprite.
	Če ni električnega napajanja, se vratca za nalaganje ne bodo odprla.	<ul style="list-style-type: none"> Če želite odpreti vratca za nalaganje, odprite pokrov filtra črpalke in povlecite ročaj za ukrepanje v sili, ki se nahaja na zadnji strani omenjenega pokrova, navzdol. Glejte »Blokada vratc«.

Težava	Vzrok	Rešitev
Pranje traja dlje, kot je določeno v uporabniškem priročniku. (*)	Plak vode je nizek.	<ul style="list-style-type: none"> Stroj ne začne obratovati, dokler ni v njem zadostne količine vode, da prepreči slabe rezultate pranja zaradi pomanjkanja vode. Zato je čas pranja daljši.
	Nizka napetost.	<ul style="list-style-type: none"> Čas pranja je podaljšan za preprečitev slabih rezultatov pranja kot posledice nizke napajalne napetosti.
	Vhodna temperatura vode je morebiti nizka.	<ul style="list-style-type: none"> Čas za segrevanje vode je v hladni sezoni daljši. Tudi čas pranja je lahko daljši za preprečevanje slabih rezultatov pranja.
	Poveča se lahko tudi število izpiranj in/ali količina vode za izpiranje.	<ul style="list-style-type: none"> Ko je potrebno dobro izpiranje, stroj poveča količino vode za izpiranje ter po potrebi doda dodatni korak izpiranja.
	Zaradi prevelike količine pralnega sredstva se lahko pojavi premočno penjenje in vklopi sistem samodejnega odstranjevanja pene.	<ul style="list-style-type: none"> Uporabljajte priporočeno količino pralnega sredstva.
Programski čas se ne odšteva. (Na modelih z zaslonom) (*)	Merilnik časa se lahko zaustavi med dotokom vode.	<ul style="list-style-type: none"> Indikator merilnika časa ne odšteva, dokler v stroj doteka ustrezna količina vode. Stroj ne začne obratovati, dokler ne zajame količine vode, zadostne za zaščito pred slabimi rezultati pranja zaradi pomanjkanja vode. Po tem indikator merilnika časa ponovno zažene odštevanje.
	Merilnik časa se lahko zaustavi med fazo ogrevanja.	<ul style="list-style-type: none"> Indikator merilnika časa ne odšteva, dokler stroj ne doseže nastavljenе temperature.
	Merilnik časa se lahko zaustavi med fazo centrifugiranja.	<ul style="list-style-type: none"> Samodejni sistem zaznavanja neuravnotežene obremenitve se lahko vključi zaradi neuravnotežene porazdelitve perila v stroju.
Programski čas se ne odšteva. (*)	Perilo v stroju je neuravnoteženo.	<ul style="list-style-type: none"> Samodejni sistem zaznavanja neuravnotežene obremenitve se lahko vključi zaradi neuravnotežene porazdelitve perila v stroju.
Stroj ne preklopi v fazo centrifugiranja. (*)	Perilo v stroju je neuravnoteženo.	<ul style="list-style-type: none"> Samodejni sistem zaznavanja neuravnotežene obremenitve se lahko vključi zaradi neuravnotežene porazdelitve perila v stroju.
	Stroj ne bo izvajal centrifugiranja, če voda v stroju ni popolnoma izpraznjena.	<ul style="list-style-type: none"> Preverite filter in odtočno cev.
	Zaradi prevelike količine pralnega sredstva se lahko pojavi premočno penjenje in vklopi sistem samodejnega odstranjevanja pene.	<ul style="list-style-type: none"> Uporabljajte priporočeno količino pralnega sredstva.
Slabi rezultati pranja: Perilo se obarva sivo. (**)	Dlje časa ste uporabljali nezadostne količine pralnega sredstva.	<ul style="list-style-type: none"> Uporabite priporočljivo količino pralnega sredstva za trdoto vode in perilo.
	Pranje je potekalo ob nizkih temperaturah dlje časa.	<ul style="list-style-type: none"> Izberite ustrezno temperaturo za pranje določenega perila.
	Nezadostna količina pralnega sredstva za trdo vodo.	<ul style="list-style-type: none"> Nezadostna količina pralnega sredstva pri trdi vodi povzroči, da madeži ostanejo na oblačilu, zaradi česar se oblačilo čez čas obarva sivo. Ko se pojavi sivina, jo je težko odpraviti. Uporabite priporočljivo količino pralnega sredstva za trdoto vode in perilo.
	Dodali ste prekomerno količino pralnega sredstva.	<ul style="list-style-type: none"> Uporabite priporočljivo količino pralnega sredstva za trdoto vode in perilo.

Težava	Vzrok	Rešitev
Slabi rezultati pranja: Madežev ni mogoče odpraviti ali pa perilo ni pobeljeno. (**)	Dodali ste premajhno količino pralnega sredstva.	• Uporabite priporočljivo količino pralnega sredstva za trdoto vode in perilo.
	V stroju je preveč perila.	• V stroj ne nalagajte prekomerne količine oblačil. Naložite količine perila, priporočene v razdelku »Preglednice programov in porabe«.
	Izbrali ste napačen program in temperaturo.	• Izberite ustrezen program in temperaturo za pranje določenega perila.
	Uporabili ste napačno vrsto pralnega sredstva.	• Uporabite originalno pralno sredstvo, ki ustreza stroju.
	Dodali ste prekomerno količino pralnega sredstva.	• Pralno sredstvo dodajte v ustrezen predelek. Ne mešajte belilnega sredstva s pralnim sredstvom.
Slabi rezultati pranja: Na perilu so se pojavili oljni madeži. (**)	Bobna niste redno čistili.	• Redno čistite boben. Za ta postopek glejte razdelek »Čiščenje vratc za nalaganje in bobna«.
Slabi rezultati pranja: Oblačila imajo neprijeten vonj. (**)	Zaradi rednega pranja ob nizkih temperaturah in/ali v kratkih programih se na bobnu pojavijo vonjave in plasti bakterij.	• Po vsakem pranju pustite predal za pralno sredstvo in vrata za vstavljanje perila priprta. Tako se v stroju ne bo pojavilo vlažno okolje, ki privlači bakterije.
Barva perila je zbledela. (**)	Naložili ste prekomerno količino oblačil.	• V stroj ne nalagajte prekomerne količine oblačil.
	Uporabili ste vlažno pralno sredstvo.	• Pralna sredstva shranjujte v okolju, ki ni vlažno, in jih ne izpostavljajte prekomernim temperaturam.
	Izbrali ste višjo temperaturo.	• Izberite ustrezen program in temperaturo glede na vrsto in umazanost perila.
Stroj slabo izpira.	Neustrezna količina, znamka in pogoji shranjevanja uporabljenega pralnega sredstva.	• Uporabite ustrezno pralno sredstvo za pralni stroj in perilo. Pralna sredstva shranjujte v okolju, ki ni vlažno, in jih ne izpostavljajte prekomernim temperaturam.
	Pralno sredstvo ste dodali v napačen predelek.	• Če pralno sredstvo dodate v predelek za predpranje, čeprav predpranja niste izbrali, bo stroj uporabil pralno sredstvo med izpiranjem ali mehčanjem. Pralno sredstvo dodajte v ustrezen predelek.
	Filter črpalke je zamašen.	• Preverite filter.
	Odočna cev je zvita.	• Preverite odočno cev.
Perilo je po pranju postalo trdo. (**)	Dodali ste premajhno količino pralnega sredstva.	• Če ne uporabite dovolj pralnega sredstva za trdoto vodo, lahko perilo postane trdo. Uporabite priporočljivo količino pralnega sredstva za trdoto vode.
	Pralno sredstvo ste dodali v napačen predelek.	• Če pralno sredstvo dodate v predelek za predpranje, čeprav predpranja niste izbrali, bo stroj uporabil pralno sredstvo med izpiranjem ali mehčanjem. Pralno sredstvo dodajte v ustrezen predelek.
	Pralno sredstvo je morda pomešano z mehčalcem.	• Ne mešajte mehčalca s pralnim sredstvom. Predal za pralno sredstvo operite in očistite z vročo vodo.
Perilo ne diši kot mehčalec. (**)	Pralno sredstvo ste dodali v napačen predelek.	• Če pralno sredstvo dodate v predelek za predpranje, čeprav predpranja niste izbrali, bo stroj uporabil pralno sredstvo med izpiranjem ali mehčanjem. Predal za pralno sredstvo operite in očistite z vročo vodo. Pralno sredstvo dodajte v ustrezen predelek.
	Pralno sredstvo je morda pomešano z mehčalcem.	• Ne mešajte mehčalca s pralnim sredstvom. Predal za pralno sredstvo operite in očistite z vročo vodo.

Težava	Vzrok	Rešitev
Ostanki pralnega sredstva v predalu za pralno sredstvo. (**)	Pralno sredstvo ste dodali v moker predal.	• Predal za pralno sredstvo posušite, preden vanj dodate pralno sredstvo.
	Pralno sredstvo je vlažno.	• Pralna sredstva shranjujte v okolju, ki ni vlažno, in jih ne izpostavljajte prekomernim temperaturam.
	Tlak vode je nizek.	• Preverite tlak vode.
	Pralno sredstvo v glavnem predelku za pranje se je zmocilo med dodajanjem vode za predpranje. Odprtine za predelek za pralno sredstvo so zamašene.	• Preverite odprtine in jih očistite, če so zamašene.
	Obstaja težava z ventili predala za pralno sredstvo.	• Pokličite pooblaščenega serviserja.
	Pralno sredstvo je morda pomešano z mehčalcem.	• Ne mešajte mehčalca s pralnim sredstvom. Predal za pralno sredstvo operite in očistite z vročo vodo.
	Bobna niste redno čistili.	• Redno čistite boben. Za ta postopek glejte razdelek »Čiščenje vratc za nalaganje in bobna«.
V stroju se ustvarja preveč pene. (**)	Uporabljate neustrezna pralna sredstva za pralni stroj.	• Uporabite pralna sredstva, ki ustrezajo pralnemu stroju.
	Dodali ste prekomerno količino pralnega sredstva.	• Uporabljajte zadostno količino pralnega sredstva.
	Pralno sredstvo je bilo shranjeno ob nepravilnih pogojih.	• Pralno sredstvo shranite na zaprtem in suhem mestu. Ne shranjujte ga na mestih, kjer se pojavljajo prekomerne temperature.
	Pletene tkanine, kot je til, lahko povzročijo premočno penjenje.	• Za te vrste tkanin uporabite manj pralnega sredstva.
	Pralno sredstvo ste dodali v napačen predelek.	• Pralno sredstvo dodajte v ustrezen predelek.
	Mehčalec se je prehitro dodal k pranju.	• Morda obstaja težava z ventili ali v predalu za pralno sredstvo. Pokličite pooblaščenega serviserja.
Pena se steka iz predala za pralno sredstvo.	Dodali ste preveliko količino pralnega sredstva.	• Zmešajte 1 žlico mehčalca in ½ litra vode ter mešanico nalijte v predelek za pranje v predala za pralno sredstvo.
		• V napravo dodajte pralno sredstvo glede na program in največjo količino perila, navedeno v "Preglednici programov in porabe". Če uporabite dodatne kemikalije (odstranjevalce madežev, belila itd.), zmanjšajte količino pralnega sredstva.
Ob koncu programa je perilo mokro. (*)	Zaradi prevelike količine pralnega sredstva se lahko pojavi premočno penjenje in vklopi sistem samodejnega odstranjevanja pene.	• Uporabljajte priporočeno količino pralnega sredstva.
(*) Stroj se ne preklopi v fazo centrifugiranja, če perilo v bobnu ni enakomerno porazdeljeno - zaščita pred poškodbami stroja in okolja. Perilo je treba znova porazdeliti in odviti.		
(**) Boben ni redno čiščen. Redno čistite boben. Glejte 4.4.2		
	OPOZORILO: Če kljub upoštevanju teh navodil ne uspete odpraviti težav, se posvetujte s prodajalcem oziroma pooblaščenim serviserjem. V nobenem primeru ne poskušajte sami popraviti stroja, ki ne deluje.	



OPOZORILO: Za informacije o odpravljanju težav preberite razdelek o aplikaciji HomeWhiz.

