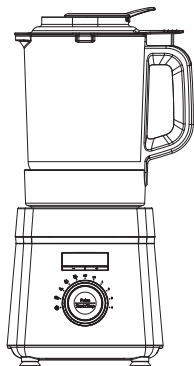


Soup Maker

User Manual



SMM888BX

EN

01M-8812953200-1618-01

beko

CONTENTS

1 Important safety and environmental instructions 11

1.1 General safety.....	11
1.2 Compliance with the WEEE Directive and Disposing of the Waste Product:	16
1.3 Compliance with RoHS Directive.....	16
1.4 Package information.....	16
1.5 Plug Wiring.....	17

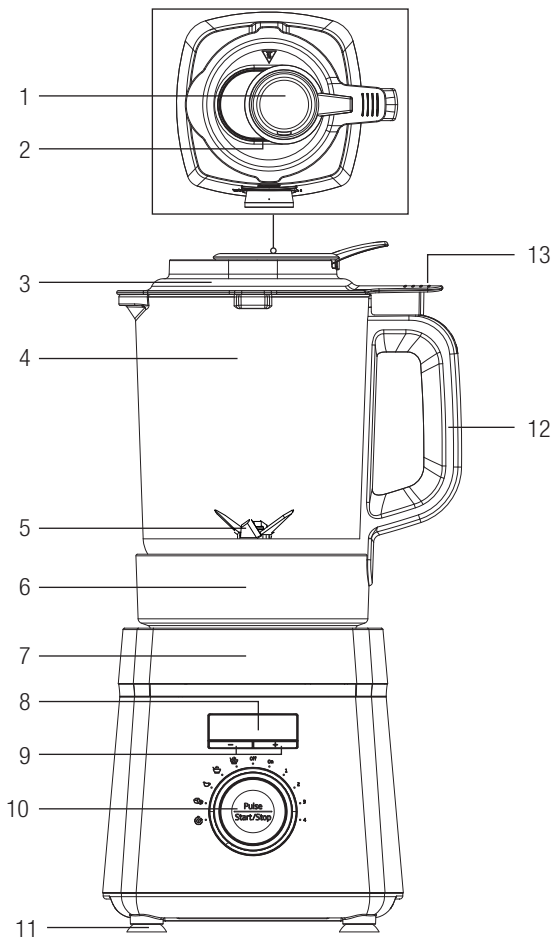
2 Use 18

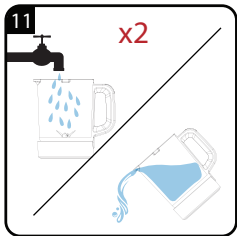
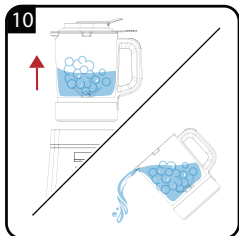
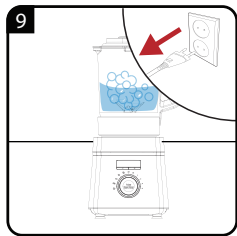
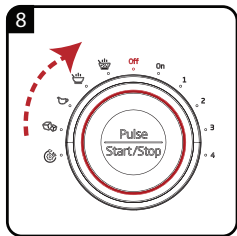
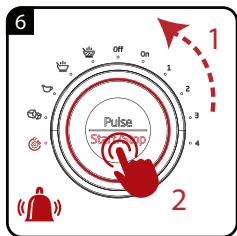
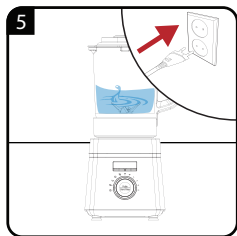
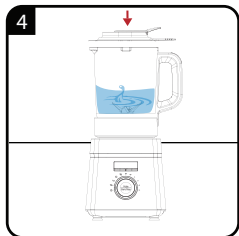
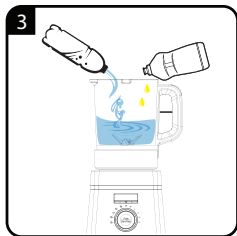
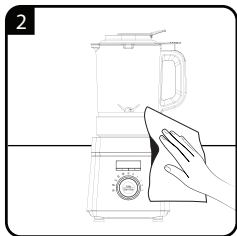
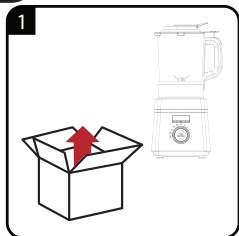
"Pulse" position	19
Recipes	20

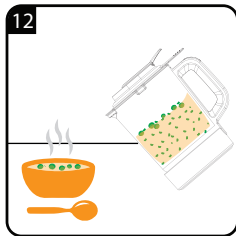
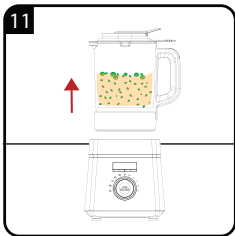
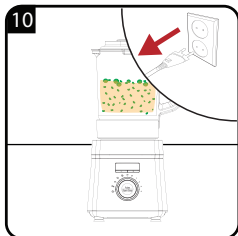
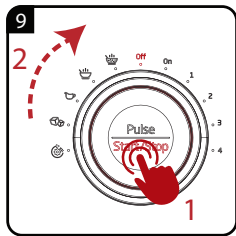
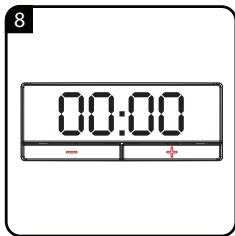
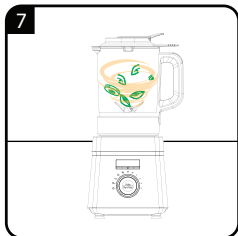
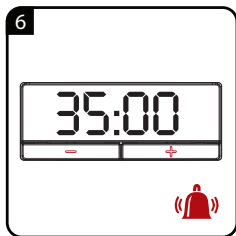
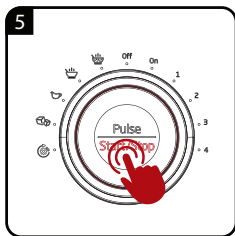
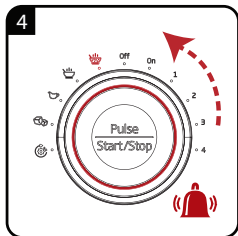
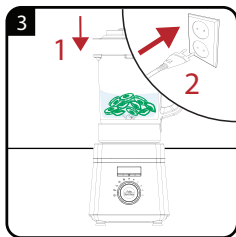
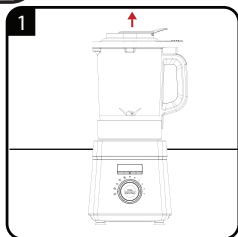
3 Cleaning and care 21

3.1 Cleaning.....	21
3.2 Storage	21
3.3 Handling and transportation	22



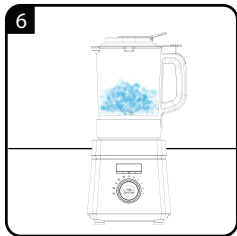
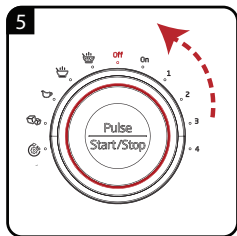
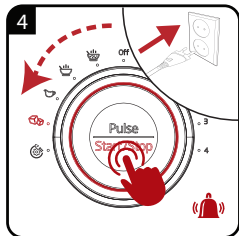
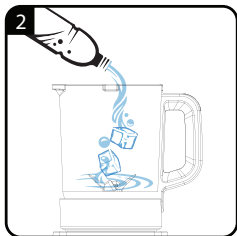
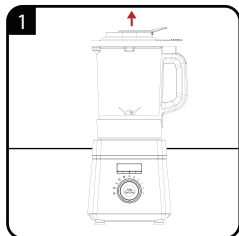


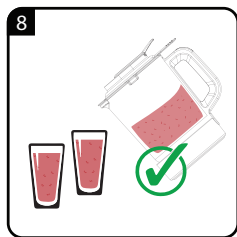
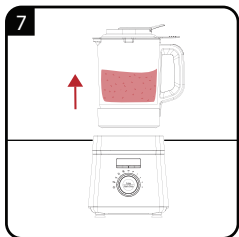
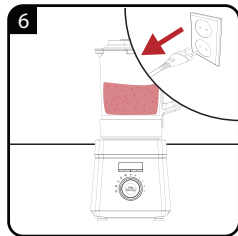
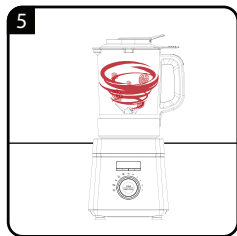
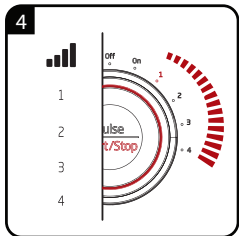
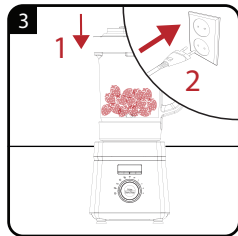
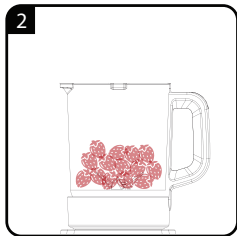
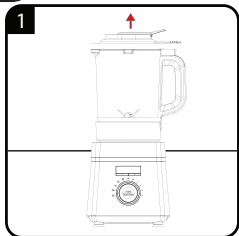






		°C	
	1-60 min.	70 °C-80 °C	40 minutes
	1-60 min.	70 °C-80 °C	40 minutes
	1-30 min.	90 °C-95 °C	—
	—	—	—
	—	—	—
Pulse	30s.	—	—





		
EN	FIRST USE	OPERATION / CLEANING AND CARE

					
EN	Chunky soup	Creamy soup	Sauce	Ice crush	Auto Clean

Please read this user manual first!

Dear Customer,

Thank you for selecting a Beko product. We hope that you get the best results from your product which has been manufactured with high quality and state-of-the-art technology. Therefore, please read this entire user manual and all other accompanying documents carefully before using the product and keep it as a reference for future use. If you handover the product to someone else, give the user manual as well. Follow all warnings and information in the user manual.

Meanings of the symbols

Following symbols are used in the various section of this manual:



Important information and useful hints about usage.



WARNING: Warnings for dangerous situations concerning the safety of life and property.



Suitable for contact with food.



Do not immerse the appliance in water.

1. Measuring cap
2. Feed hole
3. Lid
4. Measuring jug
5. Blending shaft
6. Heating plate
7. Motor unit
8. LED display
9. Timer button (+/-)
10. Control button
(Speed adjustment - Pulse/
Start/Stop)
11. Vacuum feet
12. Handle
13. Lid tab

Technical data

Voltage: 220-240V~ 50-60 Hz

Motor power: 800 W

Heating power: 1000 W

Total power: 1800 W

Rights to make technical and design changes are reserved.

The values which are declared in the markings affixed on your appliance or the other printed documents supplied with it represent the values which were obtained in the laboratories pursuant to the pertinent standards. These values may vary according to the usage of the appliance and ambient conditions.



This product has been produced in environmentally-friendly, state-of-the-art facilities.

Conforms to the WEEE Directive.



1 Important safety and environmental instructions

This section contains safety instructions that will help protect from risk of personal injury or material damage.

Failure to follow these instructions voids any granted warranty.

1.1 General safety

- Read all instructions.
- Always disconnect the blender from the supply if it is left unattended and before assembling, disassembling
- The appliance shall be not use by children. Keep the appliance and its cord out of reach of children.
- Appliance can be use by person with reduced physical, sensory and mental capabilities or lack of experience and knowledge if they have been given supervision or instruction concerning use of appliance in a safe way and if they understand hazards involved.
- Children shall not play with the appliance.

1 Important safety and environmental instructions

- Switch of the appliance and disconnect from supply before changing accessories or approaching parts that move in use.
- If the supply cord is damaged, it must be replaced by the manufacturer, its service agent or similarly qualified persons in order to avoid a hazard.
- This appliance is intended to be used in household application only. It is not designed for professional use in:
 - Staff kitchen areas in shops, offices and other working environments;
 - Farm houses
 - By clients in hotels, motels and other residential type environments;
 - Bed and Breakfast type environments.
- Do not operate any appliance with a damaged cord or plug or after the appliance malfunctions, or is dropped or damaged in any manner. Contact the manufacturer at their customer service telephone number for information on examination, repair, or adjustment.

1 Important safety and environmental instructions

- The use of attachments, including canning jars, not recommended by the manufacturer may cause a risk of injury to persons.
- Do not attempt to dismantle the appliance.
- Do not operate or place any part of this appliance or its parts on or near hot surfaces.
- Your mains power supply should comply with the information supplied on the rating plate of the appliance.
- Do not use the appliance with an extension cable.
- Do not touch the plug of the appliance with damp or wet hands.
- Always switch off and disconnect from the supply if its left unattended, when not in use, before putting on or taking off parts, and before cleaning.
- Hold the blending shaft of the appliance carefully during transportation and cleaning.
- Never touch blades while using the appliance. There is the possibility of injury due to incorrect usage.
- Avoid contacting moving parts.

1 Important safety and environmental instructions

- Do not use outdoors.
- Do not let cord hang over edge of table or counter.
- Keep hands and utensils out of container while blending to reduce the risk of severe injury to persons or damage to the blender. A scraper may be used but must be used only when the blender is not running
- Blades are sharp. Handle carefully.
- Always operate blender with cover in place.
- Do not blend hot liquids.
- After cleaning, dry the appliance and all parts before connecting it to mains supply and before attaching the parts.
- Do not immerse the appliance, the power cable, or the power plug in water or any other liquid.
- If you keep the packaging materials, store them out of the reach of children.
- Appliance is not intended to be operated by means of an external timer or separate remote-control system.
- Clean the parts of the appliance according to

1 Important safety and environmental instructions

instruction only which given "Cleaning and care operation" part of this manual.

- **WARNING:** If the surface is cracked, switch off the appliance to avoid the possibility of electric shock.
- **WARNING:** Do not remover the lid while the liquids in jug is boiling.
- **CAUTION:** Position the lid so that steam is directed away from the handle.
- During the operation jug surfaces can be hot, do not touch that surfaces incase of burning risk.
- After the operation; jug and its base can be hot because of remaining heating energy. Do not touch these area till cool down, incase of burn risk.
- Only hold from the handle during "transportation" and "Cleaning and care operation".
- **SAVE THESE INSTRUCTIONS**

1 Important safety and environmental instructions

1.2 Compliance with the WEEE Directive and Disposing of the Waste Product:

This product complies with EU WEEE Directive (2012/19/EU). This product bears a classification symbol for waste electrical and electronic equipment (WEEE).



This product has been manufactured with high quality parts and materials which can be reused and are suitable for recycling. Do not dispose of the waste product with normal domestic and other wastes at the end of its service life. Take it to the collection center for the recycling of electrical and electronic equipment. Please consult your local authorities to learn about these collection centers.

1.3 Compliance with RoHS Directive

The product you have purchased complies with EU RoHS Directive (2011/65/EU). It does not contain harmful and prohibited materials specified in the Directive.

1.4 Package information



Packaging materials of the product are manufactured from recyclable materials in accordance with our National Environment Regulations. Do not dispose of the packaging materials together with the domestic or other wastes. Take them to the packaging material collection points designated by the local authorities.

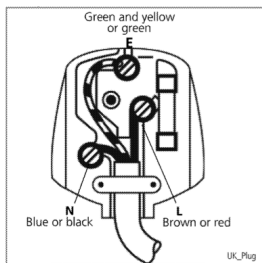
1 Important safety and environmental instructions

1.5 Plug Wiring

The moulded plug on this appliance incorporates a 13 A fuse. Should the fuse need to be replaced an ASTA approved BS1362 fuse of the same rating must be used. Do not forget to refit the fuse cover. In the event of losing the fuse cover, the plug must not be used until a replacement fuse cover has been fitted. Colour of the replacement fuse cover must be the same colour as that visible on the pin face of the plug. Fuse covers are available from any good electrical store.

- **Fiting a different plug**

- As the colours of the wires in the mains lead of this appliance may not correspond with the coloured markings identifying the terminals on your plug, proceed as follows:
- Brown cable = L (Live)
- Blue cable = N (Neutral)
- Green/yellow cable must be connected to ground (E) \perp line
- With the alternative plugs a 13 A fuse must be fitted either in the plug or adaptor or in the main fuse box. If in doubt contact a qualified electrician.



2 Use


Warnings



- Do not operate the appliance when empty.
- Do not insert any foreign objects into the jug (4) when the appliance is in use.
- When the jug is full of liquid, it becomes very heavy and hot. Lift the jug onto the base unit with both hands and wear gloves.

Warnings



- The jug, heating plate and base unit, and surfaces marked with this symbol  will get very hot during use.
- DO NOT TOUCH as possible injury could occur. Wear oven gloves when removing the jug from the base unit. Allow the appliance to cool completely before touching these surfaces, handling, moving or storing this appliance.
- Be careful when removing the lid and the measuring cup.
- Remove the lid slowly by pushing up the lid tab, with the opening facing away from you. Be careful as hot steam will escape and can burn.



You can use the measuring cap (1) or the measuring cap inlet to add ingredients into the jug (4) during the process. To remove the measuring cap, slightly turn it to the "Open" direction and pull gently.

2 Use



Warnings: Gradually increase the speed of the appliance. Do not operate it at the highest speed suddenly. Otherwise the motor may overheat.

"Pulse" position

Press "Pulse" (10) while the speed adjustment knob (10) is in ON position for mixing with high-speed short pulses. The appliance will stop when you release the button.



If you want to stop the appliance at any time during the operation, press the Star/Stop button (10).

2 Use


Recipes

	Carrot(g)	Potato(g)	Water(g)	Remark
Thick soup mode	350	350	700	35 min after the completion of the heating mode by default, the continued 40 min insulation mode
Thin soup mode	350	350	700	25 min after the completion of the heating mode by default, the continued 40 min insulation mode
Mixing temperature	700	N/A	1050	If the program automatically stop time, so do program stopped to rest a minute for a loop, do 10 cycles;if not, open 3 min 1 min a loop, do 10 cycles
Heating temperature rise	560	N/A	840	According to the process of the longest time to do, which program harsh do what

	Butter(g)	Flour(g)	Milk(L)	Remark
Jam mode	50	50	0.5	Within 30 min

3 Cleaning and care

3.1 Cleaning

1. Turn the appliance off and disconnect it from wall socket.
2. Let the appliance cool down completely.
3. To clean the appliance, follow the steps 2 - 12 in the initial use () section.



- No parts are dishwasher safe.
- Use a damp soft cloth and a small mild cleanser to clean the appliance.



Warning

- Do not immerse the jug (4) and the motor unit (7) in water. You can wipe it with a damp cloth.
- Never use petrol, solvents or abrasive cleaners, metal objects or hard brushes to clean the appliance.
- Do not touch the blades with your bare hands. The blades are very sharp. Use a brush!

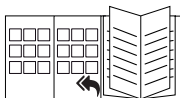
3.2 Storage

- If you do not intend to use the appliance for a long time, store it carefully.
- Unplug the appliance and wait for it to cool completely before storing it.
- Keep the appliance and its accessories in their original packages.
- Store it in a cool, dry place.
- Always keep the appliance out of the reach of children.

3 Cleaning and care

3.3 Handling and transportation

- During handling and transportation, carry the appliance in its original packaging. The packaging of the appliance protects it against physical damages.
- Do not place heavy loads on the appliance or on the packaging. The appliance may get damaged.
- Dropping the appliance may render it non-operational or cause permanent damage.



Please see the cover page of the user manual for initial use, general use and cleaning sections.

Product Guarantee

12 months breakdown and repair guarantee

Guarantor: **Beko plc, 1 Greenhill Crescent, Watford, Hertfordshire. WD18 8UF**

The guarantee does not in any way diminish your statutory or legal rights.

Your **appliance** has the benefit of our manufacturer's guarantee which covers the product for 12 months from the date of original purchase.

This gives you reassurance that if within that time, your **appliance** is proven to be defective because of either workmanship or materials, we will at our discretion either repair or replace your **appliance**.

The **appliance** must be correctly installed, located and operated in accordance with the instructions contained in the user manual. The guarantor disclaims any liability for accidental or consequential damage.

The Guarantee is subject to the following conditions:

- Documentary proof of the original purchase date is provided.
- The appliance has been installed and operated correctly and in accordance with our operating and maintenance instructions.
- The appliance is used only on the electricity supply on the rating plate.
- The appliance has only been used for normal domestic purposes.
- The appliance has not been altered, serviced, dismantled or otherwise interfered with by any person.
- The appliance is used in the United Kingdom or Republic of Ireland.
- Any parts removed during repair work or any product that has been replaced becomes our property.
- The guarantee is not transferrable if the product is resold.

The Guarantee does not cover:

- Transit, installation or delivery damage.
- Accidental damage.
- Misuse or abuse.
- Replacement of any consumable item or accessories. These include but are not limited to: plugs, cables, light bulbs, knobs, filters and flaps.
- Repairs or replacements required as a result of unauthorised repairs or inexperienced installation that fails to meet the requirements contained in the user guide or instruction book.
- Repairs to products used in commercial or non-residential household premises.

How to obtain after sales service, help or general advice

Please keep your purchase receipt or other proof of purchase in a safe place as you will need to show us this document if your product requires attention within the guarantee period.

Please also record your product details below, which will allow you to access our services more quickly and help us identify your product. The model number is printed on the front of the user guide and the serial and model number is shown on your products rating plate.

Model number	Serial number	Purchased from	Date of purchase

Please call our UK based Customer Service department if you need help or advice from us:

United Kingdom and Northern Ireland: **0333 207 9710**

Republic of Ireland: **01 862 3411**

You can also contact us through our website: **www.beko.co.uk**

