

beko

Fully Automatic Espresso Machine

User Manual



CEG5331X

EN

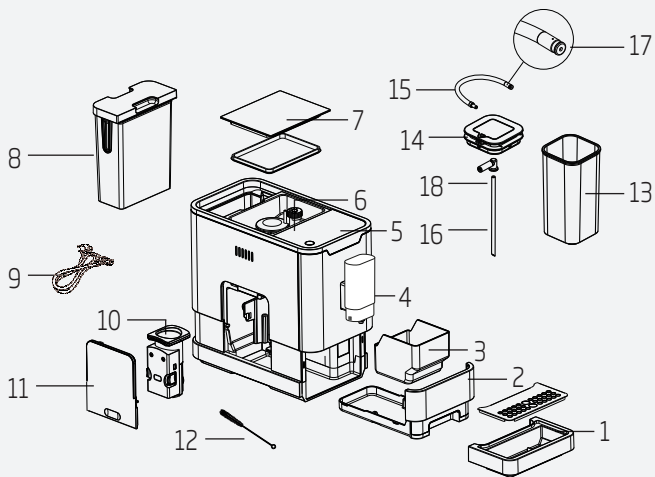
CE

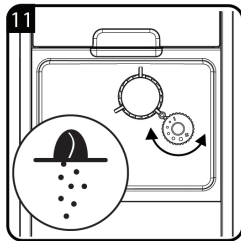
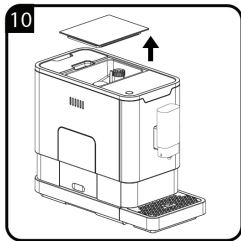
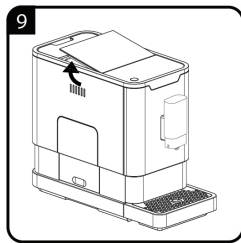
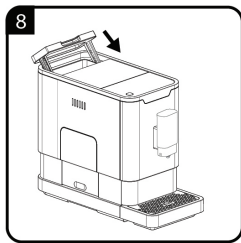
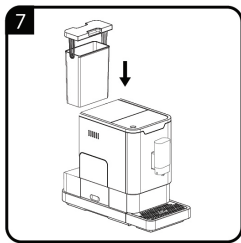
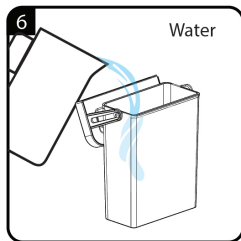
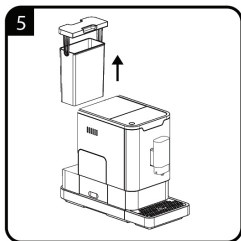
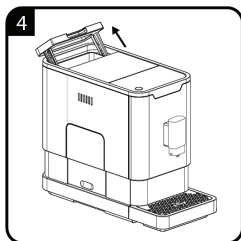
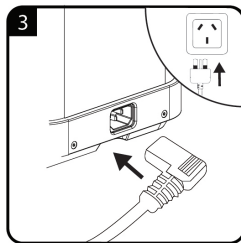
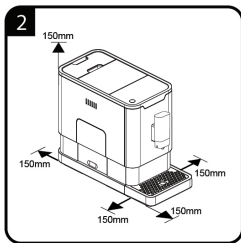
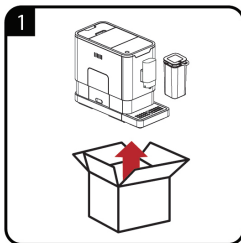
01M-8910703200-4220-01

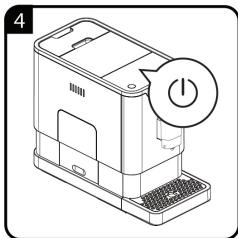
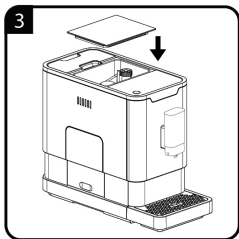
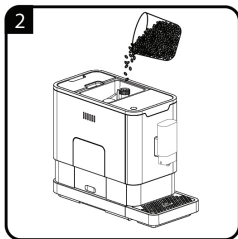
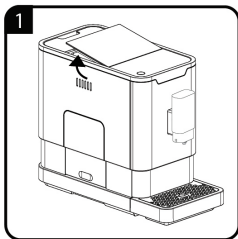
CONTENTS

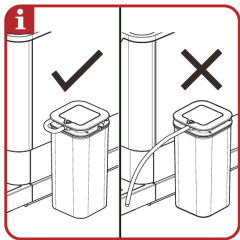
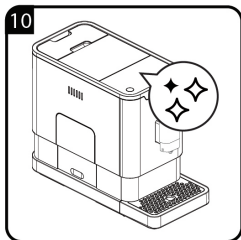
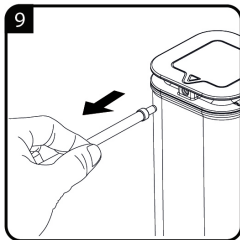
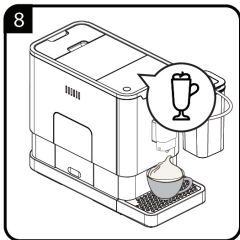
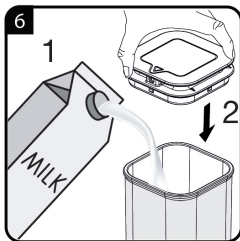
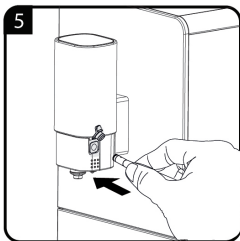
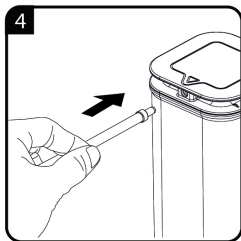
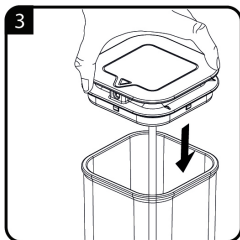
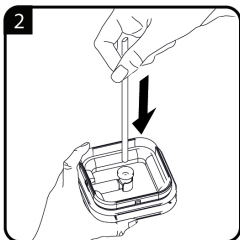
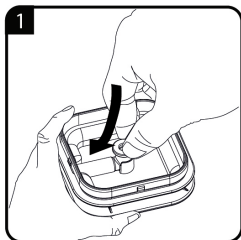
ENGLISH

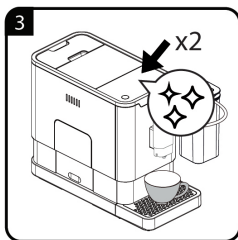
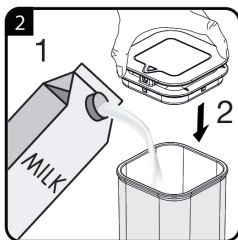
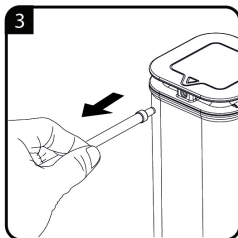
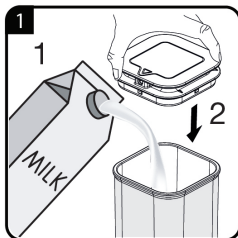
12-38

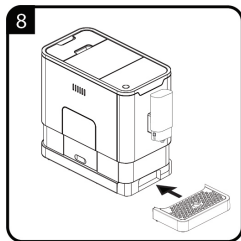
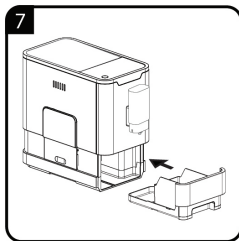
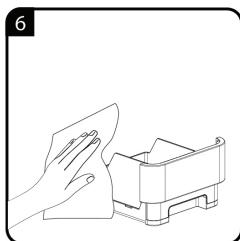
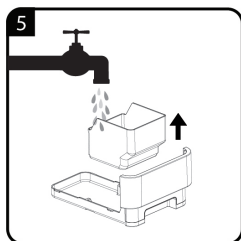
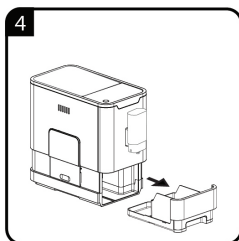
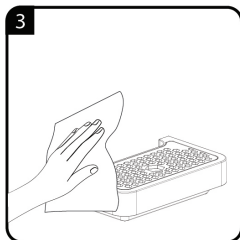
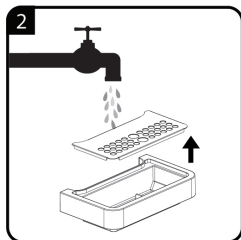
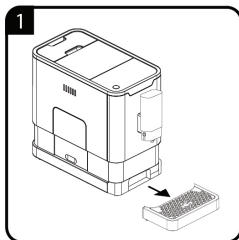


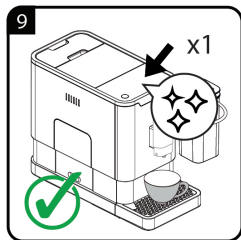
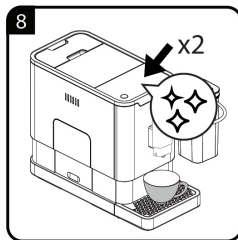
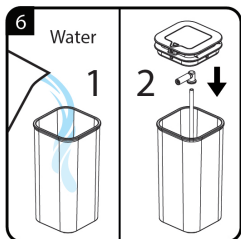
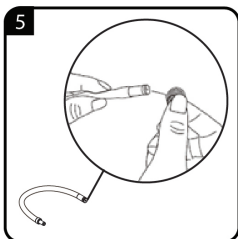
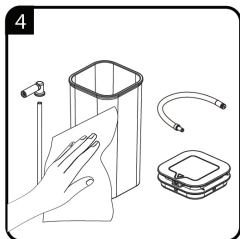
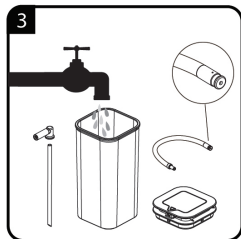
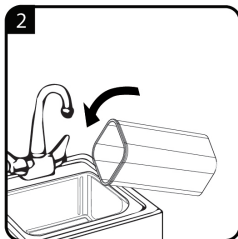
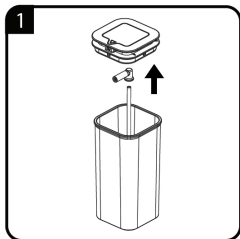


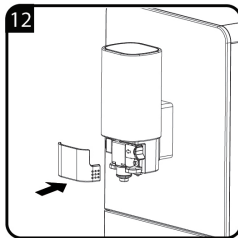
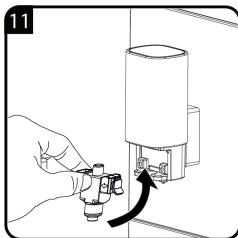
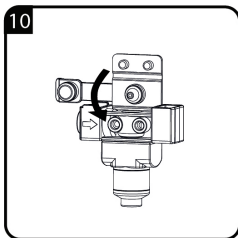
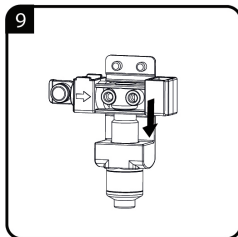
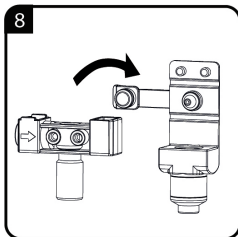
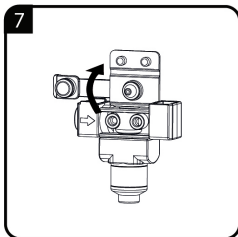
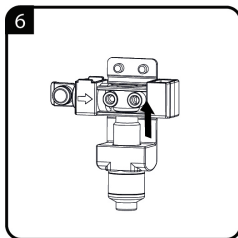
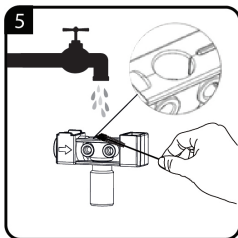
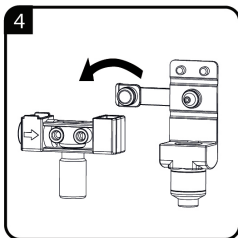
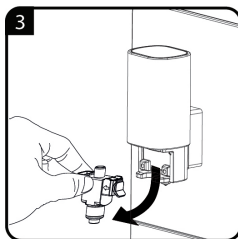
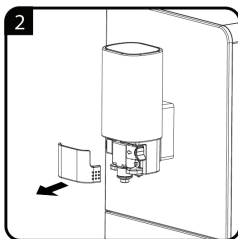
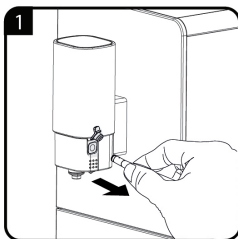


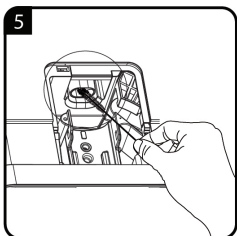
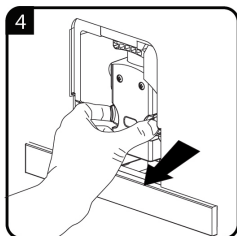
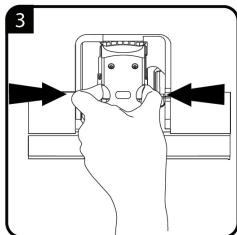
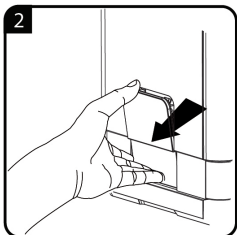
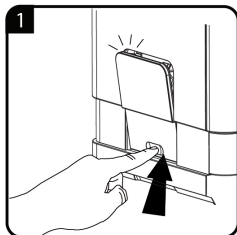












Please read this user manual first!

Dear Customers,

Thank you for selecting a Beko product. We hope that you get the best results from your product which has been manufactured with high quality and state-of-the-art technology. Therefore, please read this entire user manual and all other accompanying documents carefully before using the product and keep it as a reference for future use. If you handover the product to someone else, give the user manual as well. Follow all warnings and information in the user manual.

Meanings of the symbols

Following symbols are used in the various section of this manual:



Important information or useful hints about usage.



DANGER: Warning for hazardous situations with regard to life and property.



WARNING: Warning indicates a potentially dangerous situation.



CAUTION: Warning indicates potential material damage.



Materials are intended to be in contact with food.



This product has been produced in environmentally friendly, modern facilities

1. External Drip Tray
2. Internal Drip Tray
3. Coffee Grounds Container
4. Adjustable coffee spout
5. Control Panel
6. Coffee Bean compartment
7. Coffee Beans Container Cover
8. Water Tank
9. Power cord
10. Brewer
11. Service Door
12. Cleaness brush
13. Milk container
14. Milk container lid
15. Connection milk tube
16. Container milk tube
17. Milk tube connector
18. Connection rubber

Technical data

Power supply:

220-240 V~, 50-60 Hz

Power: 1350 W

Technical and design modifications reserved.

All declared values on the product and on the printed leaflets are picked up after laboratory measurements performed according to related standarts. These values may differ upon usage and ambient conditions.

1 Important instructions for safety and environment

This section includes the safety instructions that will help providing protection against personal injury and material loss risks. Failure to follow these instructions invalidates the granted warranty.

1.1 Danger of electric current

Danger to life by electric current!

Contact with live wires or components could lead to serious injury or even death!

Observe the following safety precautions to avoid electric shocks:

- Do not use the coffee machine if the connecting cable or mains plug are damaged.
- Before reusing the coffee machine, the mains cable must be renewed by a qualified electrician.
- Do not open the housing of the coffee machine. Danger of electric shock if live connections are touched and/or the electrical and mechanical configuration is changed.

1 Important instructions for safety and environment

- Before cleaning the bean container, pull the mains plug of the appliance out of the socket. Danger from rotating coffee mill!

1.2 Danger of burning or scalding

Parts of the coffee machine can become very hot during operation! Dispensed drinks and escaping steam are very hot!

Observe the following safety precautions to avoid burning/scalding yourself and/or others:

- Do not touch either of the metal sleeves on both coffee spouts.
- Avoid direct contact of the skin with escaping steam or hot rinsing, cleaning and descaling water.

1.3 Fundamental safety precautions

Observe the following safety precautions to ensure safe handling of the coffee machine:

- Never play with packaging material. Risk of suffocation.

1 Important instructions for safety and environment

- Inspect the coffee machine for visible signs of damage before use. Do not use a damaged coffee machine.
- If the connecting cable is damaged, it should only be replaced by a service agent recommended by the manufacturer in order to prevent any danger! Please contact the manufacturer or his customer service.
- Repairs to the coffee machine must only be carried out by an authorised specialist or by the works customer service. Unqualified repairs can lead to considerable danger for the user. They will also void the warranty.
- Repairs to the coffee machine during the warranty period may only be carried out by service centres authorised by the manufacturer, otherwise the warranty will become void in the event of subsequent damage.
- Defective parts may only be replaced with original spare parts. Only original spare parts guarantee that the safety requirements are met.

1 Important instructions for safety and environment

- This appliance can be used by children from the age of 8 up as well as by persons with reduced physical, sensory or mental abilities or with lacking experience and/or knowledge, if these persons are supervised or have been instructed how to use the appliance in a safe way and have understood the hazards which could arise from using it. Children must not play with the appliance. Cleaning and user maintenance shall not be made by children unless they are older than 8 and supervised.
- This appliance is intended to be used in household and similar applications such as:
 - staff kitchen areas in shops, offices and other working environments,
 - farm houses,
 - by clients in hotels, motels and other residential type environments,
 - bed and breakfast type environments.
- Protect the coffee machine against the effects of weather such as rain, frost and direct sunlight. Do not use the coffee machine outdoors.

1 Important instructions for safety and environment

- Never immerse the coffee machine itself, the mains cable or the mains plug into water or other liquids.
- Do not clean the coffee machine or accessories in a dish washer.
- Do not pour any other liquids apart from water or place foodstuffs into the water tank.
- Do not fill the water tank beyond the maximum mark (lower edge of the filling hole) (1.4 litres).
- Only operate the machine when the coffee grounds container, drip tray and the cup grate are fitted.
- Do not pull the cable to remove the plug from the mains socket or touch with wet hands.
- Do not hold the coffee machine with the mains cable.
- Keep the appliance and its cord out of reach of children aged less than 8 years.
- Do not operate the hot water function continuously for more than one tank of water.

1 Important instructions for safety and environment

1.4 Intended use

The fully automatic coffee machine Beko is intended for use in homes and similar applications, for instance in staff kitchens, shops, offices and similar areas or by customers in bed & breakfast, hotels, motels and other living accommodation. This coffee machine is not intended for commercial use. The machine is only intended for preparing coffee and heating milk and water. Any other use other than previously stated is considered as improper use.

Danger resulting from improper use!

If not used for its intended purpose or used in any other way, the coffee machine may be or become a source of danger.



WARNING: Therefore, the coffee machine may only be used for its intended purpose.



WARNING: Observe the procedures described in this user manual.

No claims of any kind will be accepted for damage or injury resulting from use of the coffee machine for other than its intended purpose.

The risk has to be borne solely by the machine owner.

1 Important instructions for safety and environment

1.5 Limitation of liability

All technical information, data and instructions on installation, operation and maintenance of the coffee machine contained in these operating instructions represent the current status at the time of printing and are based on the best possible knowledge gained by experience and knowhow.

No claims can be derived from the information, illustrations and descriptions in this user manual.

The manufacturer assumes no liability for damage or injury resulting from failure to observe the user manual, use for other than the intended purpose, unprofessional repairs, unauthorised modifications or use of non-approved spare parts.

1.6 Compliance with the WEEE Directive and Disposing of the Waste Product:

This product complies with EU WEEE Directive (2012/19/EU). This product bears a classification symbol for waste electrical and electronic equipment (WEEE).



This symbol indicates that this product shall not be disposed with other household wastes at the end of its service life. Used device must be returned to official collection point for recycling of electrical and electronic devices. To find these collection systems please contact to your local authorities or retailer where the product was purchased. Each household performs important role in recovering and recycling of old appliance. Appropriate disposal of used appliance helps prevent potential negative consequences for the environment and human health.

1 Important instructions for safety and environment

1.7 Compliance with RoHS Directive

The product you have purchased complies with EU RoHS Directive (2011/65/EU). It does not contain harmful and prohibited materials specified in the Directive.








1.8 Package information








Packaging materials of the product are manufactured from recyclable materials in accordance with our National Environment Regulations. Do not dispose of the packaging materials together with the domestic or other wastes. Take them to the packaging material collection points designated by the local authorities.

2 Display

2.1 Control Panel


	Flashing: Low water level/ Water tank missing
	Lack of bean
	Lights up stably: coffee grounds container is full Flashing: Internal Drip Tray/coffee grounds container is missing
	Lights up stably: Brewer is missing/ installed improperly Flashing: Service door is opened / installed improperly
	Lights up stably: Requires to do descaling Flashing: Descaling is under process
	Empty System Function is running
	Power ON/OFF Button

2 Display

	Hot Water Button
	Espresso Button
	Cappuccino
	Latte Macchiato
	One time: Quick clean Two time: Milk frother function

3 Preparation

3.1 Installation

-  Remove any protective films, stickers and any other packing material on the appliance.


3.2 Filling the water tank

 **About the protect program:** If the water tank is not fully placed into the machine, a protection mode will be activated in 15 seconds during brewing process. Hot water button will lights on control panel.

1. Make sure that the water tank is fully inserted into the machine.
2. Press the hot water button. After the hot water is dispensed, the machine will be in standby condition.

 **WARNING:** When  is flashing, the water tank is in low water level and requires filling the water tank.

-  To prevent overflow of water from the water tank, do not add water directly into the appliance with another container.

 **WARNING:** Never fill the water tank with warm, hot, sparkling water or any other liquid which might damage the water tank and the machine.

3 Preparation



WARNING: Never do the grinding adjustment when the grinder is not operating. It may damage the grinder.



The dots on the adjuster knob indicate the fineness of the grind.



When  is flashing, the appliance needs to be filled with coffee bean.



WARNING: Fill the coffee bean container only with coffee beans. Grounded coffee, instant coffee, caramelized coffee and any other objects may damage the machine.



Press the hot water button to clean inside of the coffee maker before first use.








The Appliance is equipped with auto-shut off. Depending on the mode you have selected the appliance will have different auto-shut off timing.

4 Operation

4.1 Adjusting The Volume Of Your Coffee/ Hot Water

You can memorize your desired volume of coffee for espresso and also the hot water from 25ml to 250ml.

-  There is a protective cover for the milk tube connector inlet, just take it off when you need to insert the milk tube connector.
-  Cleaning the automatic milk froth system before first use.
 Use cold milk (at a temperature of approximately 5°C/41°F) with a protein content of at least 3% to ensure an optimal frothing result
-  After use, press  button once to perform quick cleaning the system. See chapter "Daily Cleaning of the appliance", section cleaning the automatic milk froth system).

4.2 Hot Water

The appliance can dispense hot water by simply pressing the hot water button. The hot water button and the illumination will lights up indicates that the appliance is heating up the water. When the hot water button and the illumination turn off, the water is ready to serve.

4.3 Mode Selection



The machine has two different setting: default setting, ECO mode and speed mode. In ECO mode, the appliance helps to save more energy. In speed mode, the user can make their coffee faster than in default setting.




4 Operation

	ECO Mode	Speed Mode	Default Setting
Illumination Light	No	Yes	Yes
Pre-brewing*	Yes	No	Yes
Auto shut off time	10mins	30mins	20mins
Cup Volume memory	Yes	Yes	Yes



The pre-brewing function moistens the grounded beans in the brewer with a small amount of water before full extraction. This expands the coffee grounds to build up a greater pressure in the brewer which help extraction of all the oils and full flavor from the grounded beans.

1. When the machine is in standby condition, press and holds the  for 5 seconds.
2. The  will then be flashing and the following button will have the following indications for different settings:

	Cappuccino button 	Latte button 	Espresso button 
In ECO Mode	Lights ON	Flashing	Flashing
In Speed Mode	Flashing	Lights On	Flashing
In Default Setting	Flashing	Flashing	Lights On

3. Press the Cappuccino button for ECO mode, Latte button for speed mode and Espresso button for default setting. Two Beep sound will be heard indicates that the mode is being selected. (Note: If you are pressing the relative lights on button for each mode, the machine will not response).

4 Operation

4. If you would like to remain the setting unchanged, press  again or wait for 5 seconds for the machine to return to the standby condition

5 Cleaning

5.1 Cleaning of the appliance



WARNING: Never use any abrasive, vinegar or descaling agents not included in the box to clean the appliance.



When  lights up, the coffee grounds container needs to be empty.



When  lights up stably, it indicates that the brewer is missing / installed improperly. When  is flashing, it indicates that the service door is missing/installed improperly.




It is important to do this step daily to make sure the function of automatic milk frother running in good condition.

5.2 Self-Cleaning



WARNING: Please wait for finishing the self cleaning process and then switch off the machine.







When  is flashing, it indicates that the appliance needs to undergo self-cleaning. The appliance will remain in the best condition if this function is performed at least once a month or more regularly depending on the hardness of water used. It is also suggested that to

1. Fully fill the water tank.
2. Adding one pack of cleaning agent included in the box to the water tank.

5 Cleaning






WARNING: Do not use vinegar or other cleaning agent to do self-cleaning of this appliance. The cleaning agent might damage the appliance.

3. Plug in the appliance.
4. Place a sufficient large container under the coffee spout.
5. In standby condition, press and hold  and Latte button  for 5 seconds. A beep sound will be heard with  and Latte button  will be flashing.
6. Press Latte button  to confirm undergoing the self-cleaning process. To resume back to the standby condition, press .
7. Will be flashing indicates that the appliance is undergoing the self-cleaning process.








WARNING: Keep skin/body away from the hot water.

8. When all the water in the water tank is being dispensed out,  and Latte button  will be flashing. Remove all the remaining solution in the water tank and fill the tank with normal tap water until the max position. When water is filled into the water tank,  will go off. Then the appliance will continue the self-cleaning process.
9. When the self-cleaning process is completed, the appliance will switch off automatically.

5 Cleaning

5.3 Empty System Function

The empty system function is recommended to be used before long period of non-use, frost protection and before talking to repair agent.




1. In standby condition, press and hold the  and Espresso button  together for 5 seconds.
2.  will then be flashing.
3. Remove the water tank from the appliance.  will light up stably indicates that the empty system is under process. You can press  before removing the water tank to resume back to the standby condition.
4. When the empty system function is completed, the appliance will switch off automatically.



WARNING: After perform EMPTY SYSTEM FUNCTION; press the hot water button until water can come out from spout when the coffee maker is reused again.

5.4 Manual Rinsing

You can perform a manual rinsing cycle to clean the coffee nozzle after use. It is also suggested to perform a manual rinsing if the appliance has not been used for a long period of time.

1. In standby condition, press and hold the  and hot water button  together.
2.  will flashing. The coffee nozzle will then dispense a small amount of water which is used for the rinsing.

5 Cleaning



WARNING: Water comes out of the coffee nozzle is hot and is collected in the drip tray underneath. Avoid contact with splashes of water.

3. After rinsing, the appliance will return to the standby condition.

5.5 Further Setting

5.5.1 Adjusting The Quantity Of Your Coffee/ Hot Water

The machine can memorize your desired volume of coffee and hot water.

Preparing quantity for Latte Macchiato /Cappuccino/Coffee

1. Place a cup under the spout
2. Switch on the machine, all buttons lights on.
3. Press Latte/Cappuccino / Coffee button, only your desired one illuminates.
4. If machine dispenses milk, press and hold the button to continue and release the button when milk froth reaches your desired volume. Milk froth stops with two beep sounds and the volume is now stored.
5. If machine dispenses coffee, touch and hold the button to continue and release the button when coffee reaches your desired volume. Coffee stops with two beep sounds and the volume is now stored.

Preparing quantity for Hot Water

1. Place a cup under the spout
2. Switch on the machine, all buttons lights on.
3. Press Hot Water button, the button illuminates only.

5 Cleaning

4. The machine dispenses hot water. Touch and hold the button; release the button when it reaches your desired volume. Dispensing stops now and the volume is now stored

The Latte/Cappuccino/Coffee/Hot water button is programmed: every time it's pressed, the machine will brew the same amount set.

6 Troubleshooting

Problem	Cause	Solution
The appliance does not work.	The appliance is not connected to the mains.	- Plug in and press the switch. - Check the cable and the Plug
No or delayed response in several trials of pressing on function key on the panel	- Appliance is under an electromagnetic interference - Dirt over the panel	Unplug the appliance. Restart after few minutes Clean the panel with the cloth provided
The coffee is not hot enough.	- The cups have not been preheated. - The brewing unit is too cold.	Rinse the appliance at least 3 times before making the coffee.
The coffee cannot come out from spout.	Empty system function maybe used before.	Press the hot water button until water can come out from spout.
The first cup of coffee is poor quality.	The first run of grinder does not pour sufficient quantity coffee power into the brewing unit.	Throw the coffee away. The other coffees will always be of good quality.
Coffee has no cream.	- Coffee bean is not fresh.	Change or using appropriate brand of coffee bean.

6 Troubleshooting

Problem	Cause	Solution
The touch buttons are not sensitive	Not pressing the touch button from the front direction of the appliance	Press the lower bottom part of the icon of the touch button from the front direction of the appliance.
The appliance takes too long time to warm up.	Excessive scale has built up.	Descale the appliance.
The water tank is removed / the water level is very low in the water tank but have no alert.	The area near the water tank connector is wet.	Wipe the water around the water tank connector
Internal drip tray is filled with a lot of water.	Coffee powder too fine which block the water to come out.	Adjust the coffee fineness to bigger dot during grinder operation.
Coffee is delivered too slowly or a drop at a time.	Coffee powder too fine which block the water to come out.	Adjust the coffee fineness to bigger dot during grinder operation.
Lack of bean indicator flashes but there is still a lot of coffee bean inside the container.	Internal coffee powder outlet is blocked.	Follow the steps in Cleaning the coffee powder outlet.
No milk foam out from the machine	The automatic milk frother is dirty or not assembled or installed correctly	Clean the automatic milk frother and make sure it is correctly assembled or installed.
No milk foam out from the machine	The hole of Milk tube connector is blocked by milk residues	Refer to section "Daily Cleaning of the appliance", follow "cleaning the milk container and connection milk tube", Clean the connector and make sure all the hole on the connector is clean, use needle or bristle of brush to clean the hole.

6 Troubleshooting

Problem	Cause	Solution
The hole of Milk tube connector is blocked by milk residues which hardly to be cleaned	The milk tube connector not be cleaned for a long time	Soaking the connection milk tube into warm water for an hour, follow the "cleaning the milk container and connection milk tube" in section "Daily Cleaning of the appliance", keep using frothing milk function to clean until water come from dispenser smoothly. Use needle or bristle of brush to clean the hole
The milk froth is of poor quality	The type of milk used is not suitable for frothing	Different types of milk result in different amounts of froth and different forth qualities. Semi-skimmed or full-fat cow's milk gives good results.
	The temperature of the milk is too high	No milk foam out from the machine
Milk spray out the table	Milk dispensing tube is not put in place	Milk foam spray out from dispenser
Descaling indicator keep flashing even after the descaling process	Descaling process is not completed	Please be patient and wait for the process finish. The machine will auto shut off automatically , don't switch off the machine manually
The appliance no longer performs the rinsing cycle when switched on or off.	Improper handling when servicing the appliance may be the cause.	<ol style="list-style-type: none">1. When the appliance is on, remove the coffee group access door.2. Press and hold the on/off button until you hear 2 beeps.3. Replace the coffee group access door.



55 Blanck Street, Ormeau Q 4208
P O Box 354, Ormeau Q 4208
P : 5549 3146 F : 5549 3546
ABN : 49 152 055 162

ORIGINAL MANUFACTURER'S WARRANTY ADVICE FORM

BEKO COFFEE MACHINE

24 months warranty, full parts and labour warranty only.

WARRANTY CONDITIONS

The following conditions apply only in relations to the warranty expressly given on this Warranty Advice Form supplied with the product. This warranty only applies to appliances purchased and used in Australia or New Zealand and is in addition to (and does not exclude, restrict or modify in any way) other rights and remedies under a law to which the appliances relate, including any non-excludable statutory guarantees in Australia and New Zealand. It applies to the original purchaser and for appliances used in domestic applications only.

- This warranty does not apply:
 - if the identification number attached to the appliance has been altered, rendered illegible or removed;
 - to light globes;
 - to paint and vitreous enamel finishes and glass;
 - to surfaces damaged by use of aerosols or cleaners;
 - if the appliance has been –
 - subject to misuse, abuse, negligence, accident, fire or floods;
 - connected or improper, inadequate or faulty electricity, gas, water or drainage services or intake or exhaust ducts or flues, or operated using incorrect or contaminated fuels or lubricants;
 - installed, maintained or operated otherwise than in accordance with the instructions furnished by Beko including the improper use of detergents, bleaches, cleaners or other additives;
 - damaged by foreign objects in the appliance;
 - serviced, repaired or altered otherwise than by Beko authorised service agents of Beko, or using other than Beko approved replacement parts.
- The purchaser shall be responsible for any expenses involved in making the appliances readily accessible for servicing, the purchaser shall be responsible for any costs of transporting the appliance or parts thereof to and from the nearest Beko authorised service agent.
- This warranty is the only expressed warranty given by Beko.
- Beko reserves the right to determine whether or not the fault is caused by faulty workmanship or material or that any part is defective.
- Where permitted by law, this warranty shall not apply to loss suffered through or resulting from the non-operation or the ineffective operation of the appliance or any part of the appliance.
- The purchaser must produce proof of the date of purchase together with this Warranty Advice Form when making a claim.
- Subject to your statutory rights as to the merchantable quality of the product or accessory. In the event of a product or accessory being replaced during the guarantee, the guarantee on the replacement will expire at the original date, i.e., 24 months from the original purchase date.
- Australia: For Appliances and services provided by Beko in Australia, Beko goods come with a guarantee by Beko that cannot be excluded under the Australian Consumer Law. You are entitled to a replacement or refund for a major failure and for compensation for any other reasonably foreseeable loss or damage. You are also entitled to have the Appliance repaired or replaced if the Appliance fails to be of acceptable quality and the failure does not amount to a major failure. 'Acceptable quality' and 'major failure' have the same meaning as referred to in the Australian Consumer Law.
- New Zealand: For Appliances and services provided by Beko in New Zealand, the Appliances come with a guarantee by Beko pursuant to the provisions of the Consumer Guarantees Act, the Sales of Goods Act and the Fair Trading Act. Where the Appliance was purchased in New Zealand for commercial purposes the Consumer Guarantee Act does not apply.

These Warranty Conditions supersedes and excludes all other representations, conditions and warranties, except those implied by legislation previously referred to.

For Service or Spare Parts: Aust 1300 282 356 NZ 0800 692 356

Arçelik A.Ş.
Karaağaç Cad. No: 2-6 Sütlüce,
34445, İstanbul, Türkiye

www.beko.com.au