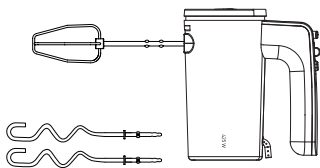


Mixer

User Manual



HMM70420B

EN

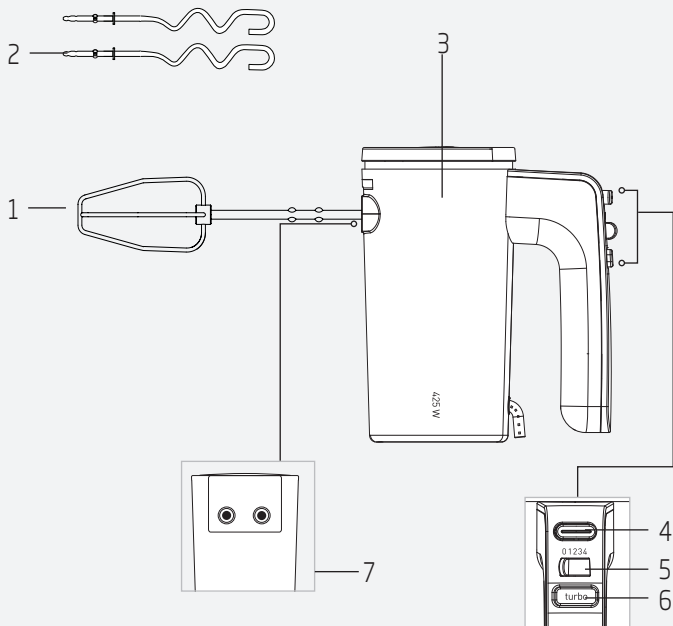
01M-8819423200-1420-01

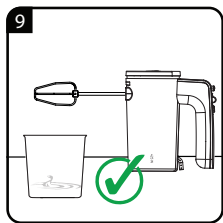
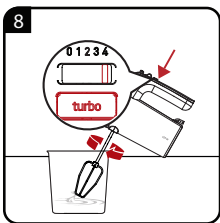
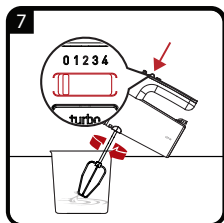
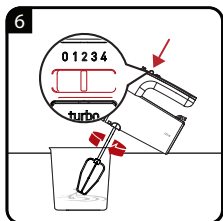
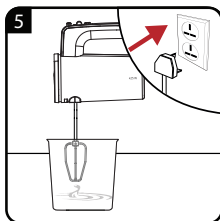
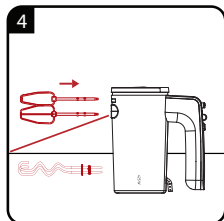
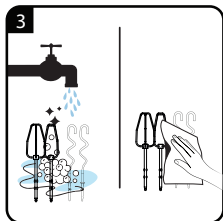
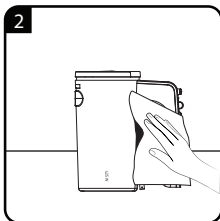
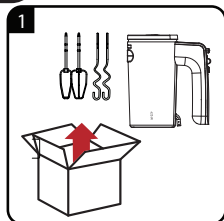
beko

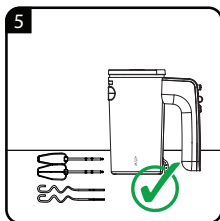
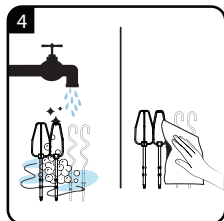
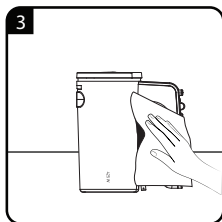
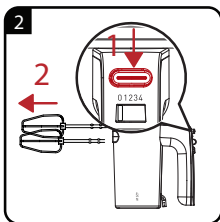
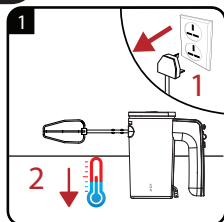
CONTENTS

ENGLISH

08-15







EN	OPERATION	CLEANING AND CARE

Please read this manual first!

Dear Valued Customer,
Thank you for preferring this Beko appliance. We hope that you get the best results from your appliance which has been manufactured with high quality and state-of-the-art technology. For this reason, please read this user manual and all other provided documents carefully before using the appliance and keep it as a reference for future use. If you hand over the appliance to someone else, give the user manual as well. Follow the instructions by paying attention to all the information and warnings in the user manual.

Meanings of the symbols

Following symbols are used in various sections of this manual:



Important information and useful hints about usage.



WARNING: Warnings for dangerous situations concerning the safety of life and property.



Suitable for contact with food.



Do not immerse the appliance in water.



Protection class for electric shock.



This product has been produced in environmentally-friendly, state-of-the-art facilities.

Conforms to the WEEE Directive.



It does not contain PCB.

1. Whiskers
2. Dough kneading accessories
3. Motor unit
4. Accessory release button
5. Operation and speed adjustment button
6. TURBO Button
7. Accessory slots

Technical data

Power supply: 220 - 240 V ~,
50-60 Hz

Power:425 W

Rights to make technical and design changes are reserved.

1 Important safety and environmental instructions

This section contains safety instructions that will help protect from risk of personal injury or material damage. Failure to follow these instructions voids any granted warranty.

1.1 General safety

- This appliance complies with international safety standards.
- This appliance cannot be used by people who have limited physical, sensory or mental capacity or who do not have knowledge and experience, provided that they are supervised or they understand the instructions with regard to safe use of the product and potential dangers.
- Children should not play with the appliance. Cleaning and maintenance works should not be performed by children.
- This appliance cannot be used by children.
- Keep the appliance and the power cable out of the reach of children.

1 Important safety and environmental instructions

- Do not use it if the power cable, blades or the appliance itself is damaged. Contact an authorised service.
- Only use the original parts or parts recommended by the manufacturer.
- Do not attempt to dismantle the appliance.
- Your mains power supply should comply with the information supplied on the rating plate of the appliance.
- Do not use the appliance with an extension cable.
- Do not pull the power cable when unplugging the appliance.
- Unplug the appliance when left unattended and wait for it to stop completely while installing/removing accessories or before cleaning.
- Do not touch the plug of the appliance with damp or wet hands.
- Do not use the device for hot food.
- This appliance is not suitable for dry or hard foods.

1 Important safety and environmental instructions

- To prevent overheating, do not use the appliance continuously for more than 10 seconds. Leave to cool for 1 minute in between each 10 seconds of operation.
- To prevent overheating, do not use mixing with spirals continuously for more than 2 minutes. Leave to cool for 1 minute in between each 2 minutes of operation.
- Use the appliance only with the supplied base and container.
- Do not operate the appliance without the ingredients in the bowl.
- Remove bones and stones from food to prevent the blades and the appliance from getting damaged.
- This appliance is not suitable for dry or hard foods as this will quickly cause the blades to become dull.
- Follow all warnings to prevent injuries due to incorrect use.
- When emptying the container, during cleaning and grabbing chopping blades with bare hands serious injuries could result due to incorrect use.

1 Important safety and environmental instructions

Use the plastic section trying to hold the chopping blade.

- After cleaning, dry the appliance and all parts before connecting it to mains supply and before attaching the parts.
- Do not immerse the appliance, power cable, or power plug in water or any other liquids.
- Do not operate or place any part of this appliance or its parts on or near hot surfaces.
- If you keep the packaging materials, store them out of the reach of children.

1.2 Compliance with the WEEE Directive and Disposing of the Waste Product:

This product complies with EU WEEE Directive (2012/19/EU). This product bears a classification symbol for waste electrical and electronic equipment (WEEE).



This symbol indicates that this product shall not be disposed with other household wastes at the end of its service life. Used device must be returned to official collection point for recycling of electrical and electronic devices. To find these collection systems please contact to your local authorities or retailer where the product was purchased. Each household performs important role in recovering and recycling of old appliance. Appropriate disposal of

1 Important safety and environmental instructions

used appliance helps prevent potential negative consequences for the environment and human health.

1.3 Compliance with RoHS Directive

The product you have purchased complies with EU RoHS Directive (2011/65/EU). It does not contain harmful and prohibited materials specified in the Directive.

1.4 Package information



Packaging materials of the product are manufactured from recyclable materials in accordance with our National Environment Regulations. Do not dispose of the packaging materials together with the domestic or other wastes. Take them to the packaging material collection points designated by the local authorities.

1.5 Things to do for energy saving

Switch off and unplug the appliance after using it.

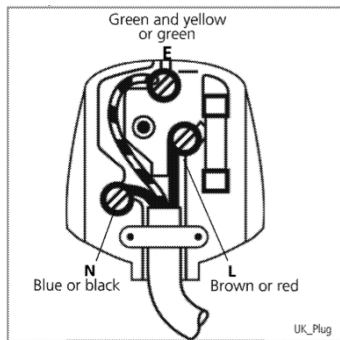
1.6 Plug Wiring

The moulded plug on this appliance incorporates a 13 A fuse. Should the fuse need to be replaced an ASTA approved BS1362 fuse of the same rating must be used. Do not forget to refit the fuse cover. In the event of losing the fuse cover, the plug must not to be used until a replacement fuse cover has been fitted. Colour of the replacement fuse cover must be the same colour as that visible on the pin face of the plug Fuse covers are available from any good electrical store.

1 Important safety and environmental instructions

Fiting a different plug

- As the colours of the wires in the mains lead of this appliance may not correspond with the coloured markings identifying the terminals on your plug, proceed as follows:
- Brown cable = L (Live)
- Blue cable = N (Neutral)
- Green/yellow cable must be connected to ground (E) \equiv line
- With the alternative plugs a 13 A fuse must be fitted either in the plug or adaptore or in the main fuse box. If in doubt contact a qualified electrician.



2 Usage

2.1 Intended use

This appliance is intended only for household use; it is not suitable for professional use.

2.2 Whisking/Dough kneading



WARNINGS:

- Do not use the whisker and the kneading accessories together.
- Leave the speed adjustment button at “0” position.
- Place the container to be used for processing on a stable and flat surface.
- Speed levels range between 1-4. It should be increased incrementally starting from 1.
- Always use both of the whiskers together.
- Always use both of the kneading accessories together.
- Teflon-coated pots can be scratched.

2.3 TURBO button

When you need extra high speed, press and hold TURBO button and release when you do not need.



WARNING: Do not use TURBO feature for more than 1 minute.

3 Cleaning and care

3.1 Cleaning and care



WARNING: Never use gasoline, solvents or abrasive cleaning agents, metal objects or hard brushes to clean the appliance.

3.2 Storage

- If you do not intend to use the appliance for a long time, store it carefully.
- Unplug the appliance before lifting the appliance and its cable.
- Store the appliance in a cool and dry place.
- Keep the appliance out of the reach of children.

3.3 Handling and transportation

- During handling and transportation, carry the appliance in its original packaging. The packaging of the appliance protects it against physical damages.
- Do not place heavy loads on the appliance or on the packaging. The appliance may get damaged.
- Dropping the appliance may render it non-operational or cause permanent damage.

